

**Shiri,Mostafa** **C10**  
 **Mayerhofer,Peter** **1735**  
 VM2018 Linz, Reisi's (5.2) **2122**  
 [F11] 24.07.2018

**1.e4 e6 2.d4 d5 3.Sc3 dxe4 4.Sxe4 Ld7?!±**  
 [  $\triangleleft$ 4...Sf6 ]  
 [od. 4...Le7 ]  
 [od.auch 4...Sc6 ]  
**5.Sf3 Lc6 6.Ld3 Sd7** [Diagramm](#)

(Diagramm 1)

**7.Lg5**  
 [etwas  $\triangleleft$ 7.Sc3 Sgf6 8.0-0 Le7 9.Te1 0-0 10.Se5  
 ( 10.Lf4 h6 11.h3 Te8 [Diagramm](#)

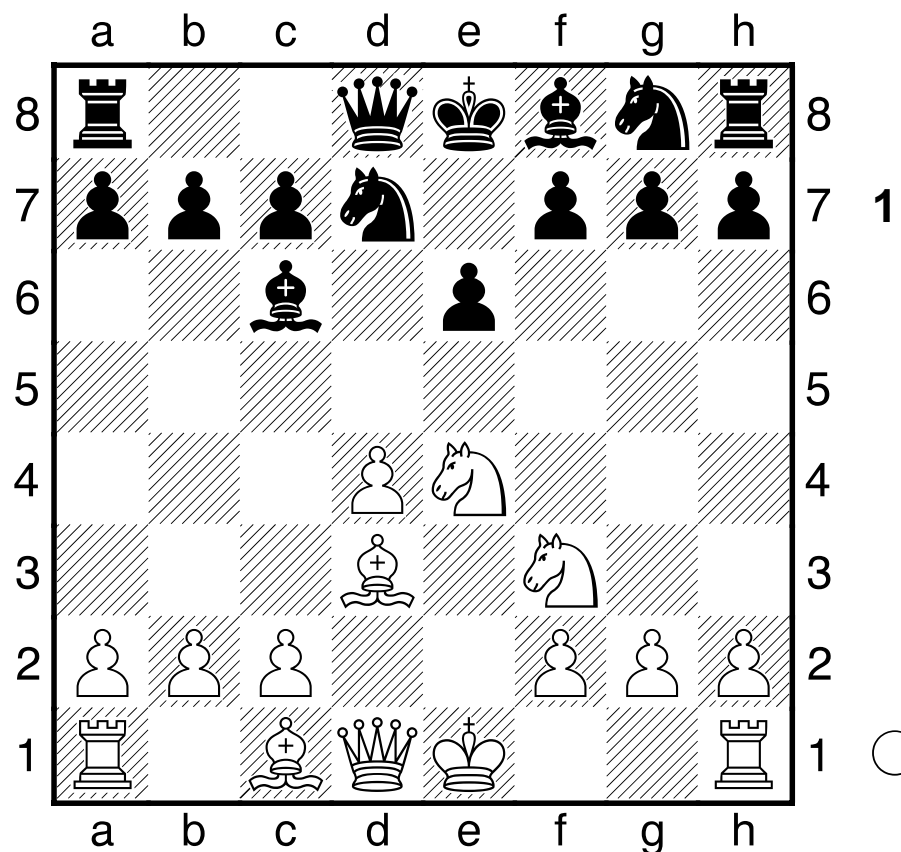
(Diagramm 2)

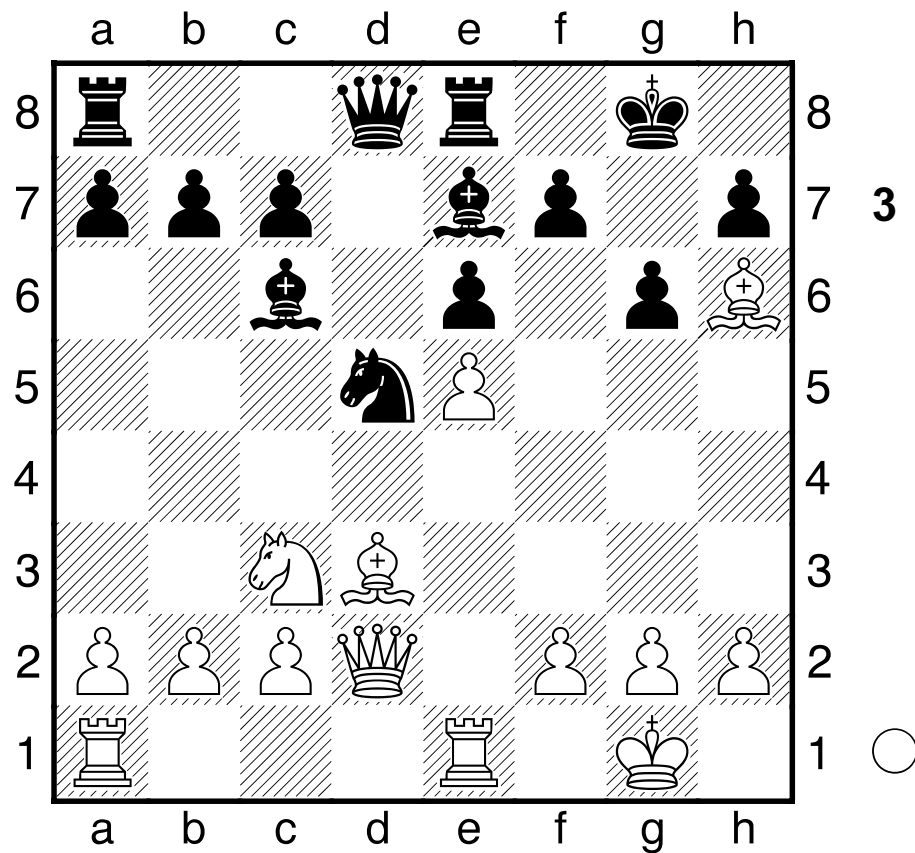
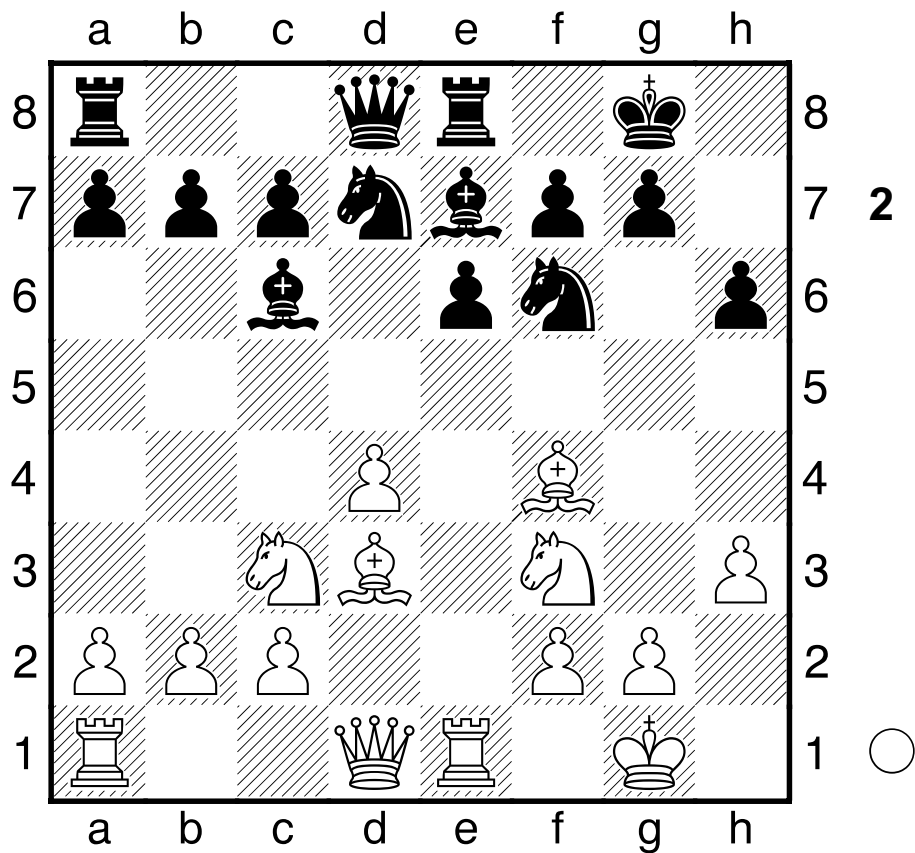
) 10...g6 11.Lh6 Te8 12.Dd2 Sxe5 13.dxe5 Sd5  
[Diagramm](#)

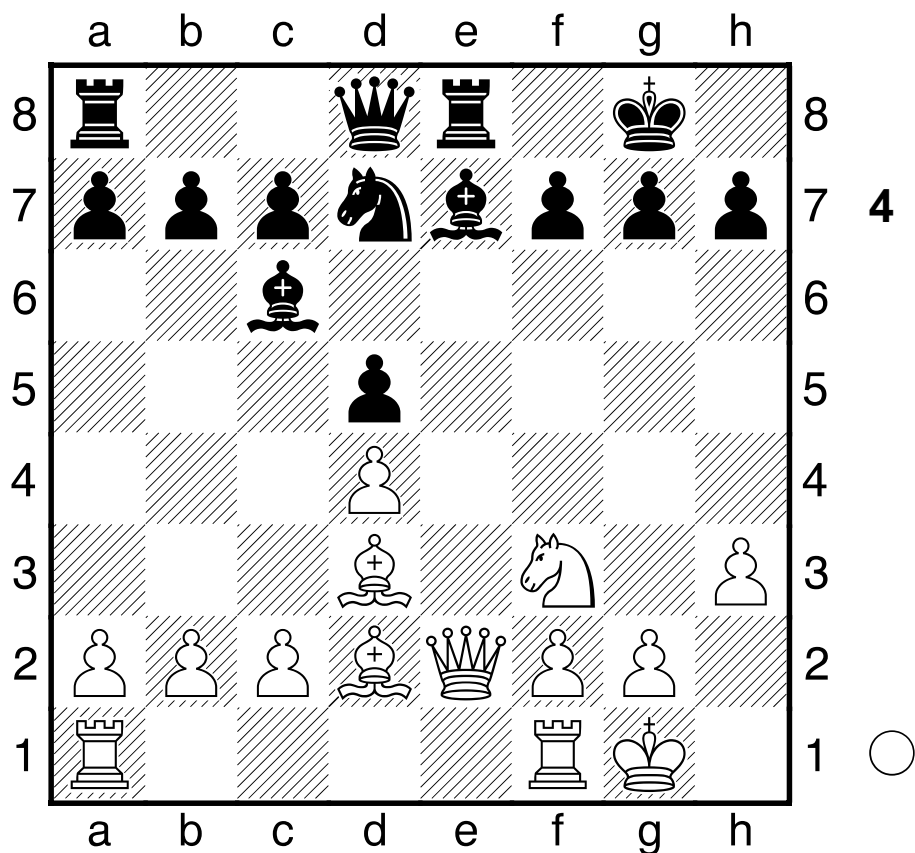
(Diagramm 3)

0,6;110'. ]  
 [od. 7.De2 Sgf6 8.Sc3 Le7 9.0-0 0-0 10.h3 Te8  
 11.Ld2 Sd5 12.Sxd5 exd5 [Diagramm](#)  
 0,58;110'. ]

**7...Le7 8.Lxe7 Dxe7 9.c3?!= Sgf6 10.Dc2 h6 11.h3**







0-0 12.0-0 Tad8 13.Tfe1 Tfe8±

[ ♖13...Lxe4 ]

[ od. 13...Sxe4 ]

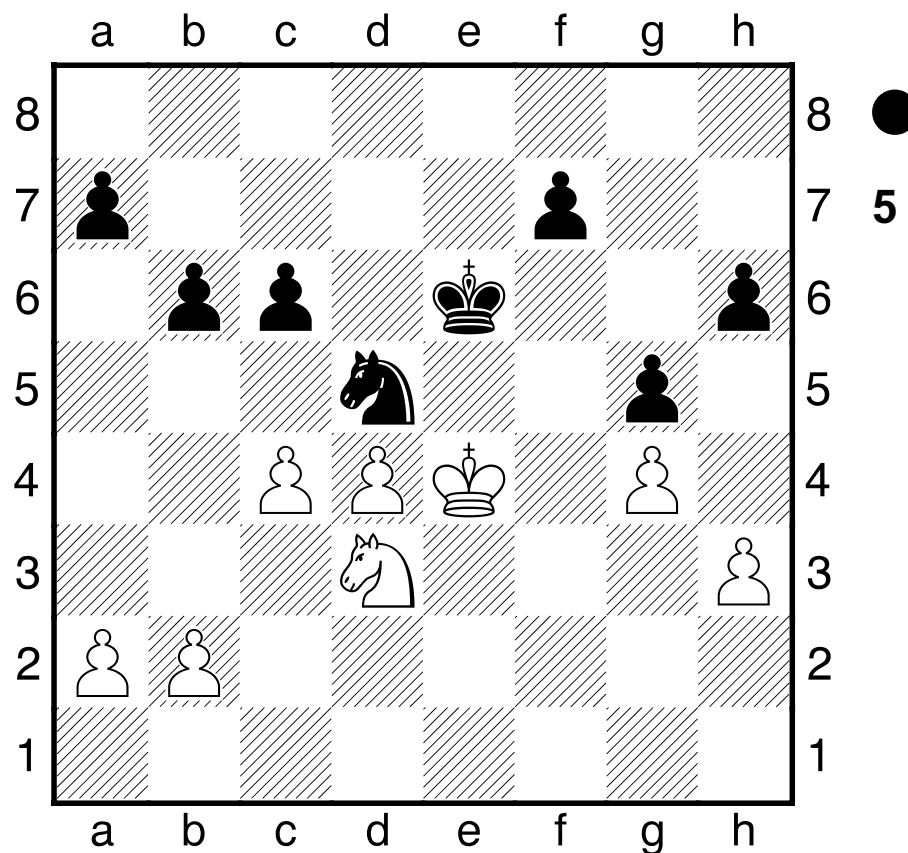
14.Sxf6+ Dxf6 15.Le4 Lxe4 16.Dxe4 c6 17.Tad1 Df5

18.Dxf5 exf5 19.Txe8+ Txe8 20.Te1 Txe1+ 21.Sxe1

Sb6 22.Kf1 Kf8 23.Ke2 Ke7 24.Kd3 Sd5 25.g3 f4

26.Ke4 fxg3 27.fxg3 Ke6 28.g4 g5 29.Sd3 b6 30.c4

Diagramm



Se7?±

[ 30...Sf6+= 31.Ke3 h5 32.Sf2 hxg4 33.hxg4 a5 34.b3

Sg8 (od. 34...b5 ;etwas ≤34...Sd7 35.Se4 f6 36.Sg3

b5 37.Sf5 bxc4 38.bxc4 c5 39.d5+ Ke5± ) 35.Se4 f6

36.Sc3 Sh6= ]

[ 30...Sc7??+- 31.Se5 Se8 32.Sxc6 Sf6+ 33.Ke3 a5

34.d5+ Kd6 35.Kd4 Sd7 2,7;1h. ]

31.Se5 f6??+-

[ 31...f5+ 32.gxf5+ Sxf5 33.Sxc6 Sd6+ 34.Kd3 h5  
35.b3 a5± 1,22;>3h. ]

**32.Sxc6 Sxc6??**

[ ⊔32...f5+ 33.gxf5+ Sxf5 34.Sxa7 Sd6+ 35.Kd3 h5  
36.c5 bxc5 37.dxc5 Se8+- ]

**33.d5+ Kd6 34.dxc6 Kxc6 35.Kf5 Kc5 36.Kxf6 Kxc4**

**37.Kg6 Kd3 38.Kxh6 Kc2 39.Kxg5 Kxb2 40.h4 b5**

**41.h5 b4 42.h6 Kxa2 43.h7 b3 44.h8D b2 45.Dd4**

**b1D 46.Dxa7+ Kb3 47.Db6+ Kc2 48.Dxb1+**

**1-0**