

C50

□ Philidor,Vtdg.

■ 9 Partien

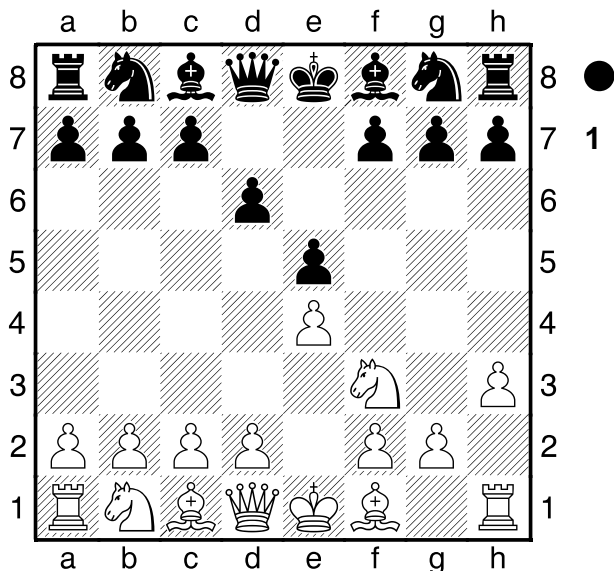
je 3 W-,S-Siege&Remisen

2007

[Fritz11]

1.e4 e5 2.Sf3 d6 3.d4 Diagramm

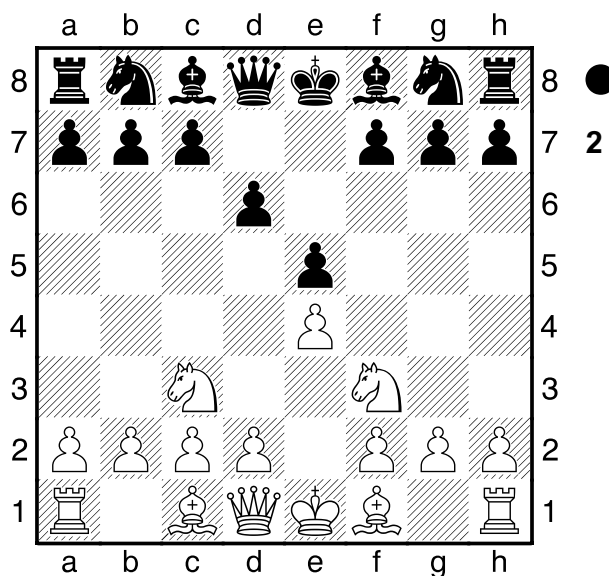
[3.h3 Diagramm



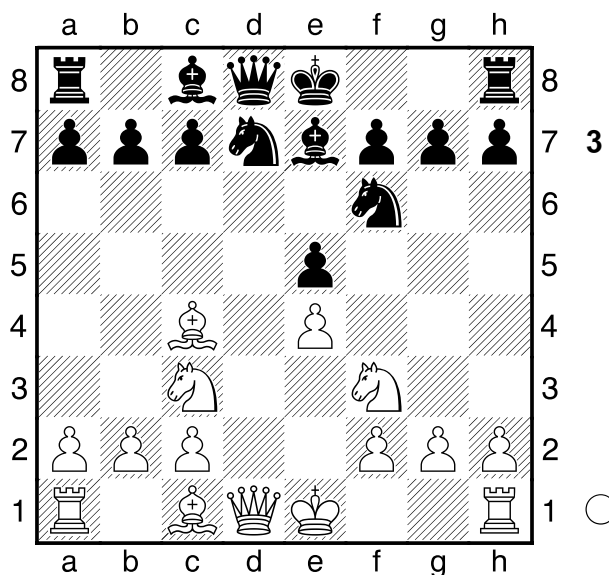
Sf6 4.d3 (4.Sc3 Sbd7 5.Lc4 h6
6.0-0 c6 7.a4 a5 8.Te1 Le7 9.d4
exd4 10.Sxd4 0-0 11.Sf5 Se5
12.Sxe7+ Dxe7 13.La2 Le6 14.Lb1
Tad8 15.b3 d5 16.exd5 Lxd5
17.De2 Tfe8 18.Sxd5 Sxd5 19.Kh1
Dh4 20.Lb2 Sf4 21.Df1 Sg4
22.Txe8+ Txe8 23.Ld4 Se2 24.Lb6
Sc3 25.g3 Dh5 26.Ld4 Dd5+
27.Kg1 Te1 28.Dxe1 Dxd4 29.hxg4
Se2+ 30.Dxe2 Dxa1 31.Dd1 b5
32.axb5 cxb5 33.c4 bxc4 34.Lh7+
1-0 Krueger,M-Orcera Gomez,F
(1841)/Calvia 2007/CBM 120 ext)
4...Le7 5.Sbd2 0-0 6.g4 Sc6 7.Lg2
Le6 8.c3 d5 9.De2 a5 10.a4 dxe4
11.dxe4 Sd7 12.0-0 Sc5 13.Se1
Dd7 14.Sdf3 Lb3 15.Le3 De6
16.Lxc5 Lxc5 17.Sd2 Tfd8 18.Sef3
Lc2 19.Se1 Dd7 20.Sxc2 Dxd2
21.Tfe1 Td7 22.Se3 Lxe3 23.fxe3
Dxe2 24.Txe2 Tad8 25.Tae1 Sb8

26.b4 Sa6 27.Tb2 Td3 28.bxa5
Sc5 29.c4 Tc3 30.Tb4 Sd3 31.Td1
½-½ Haraldsson,L (2067)-Monmeneu
Chulia,V (2197)/Calvia 2007/CBM
120 ext]

[3.Sc3 Diagramm

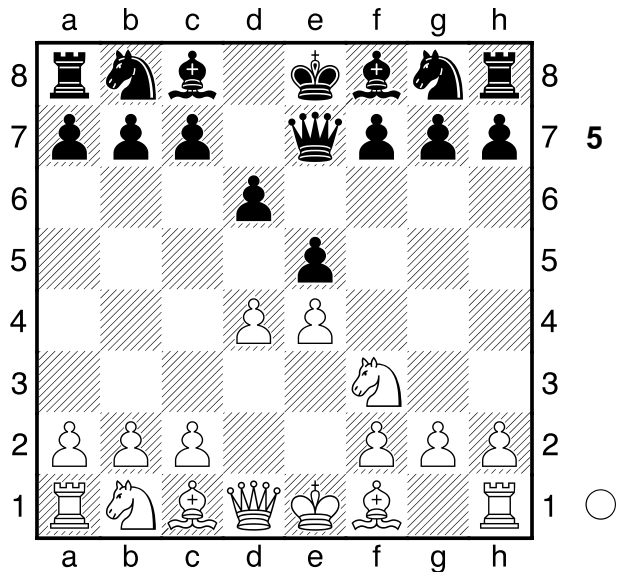


Sf6 4.Lc4 Le7 5.d4 Sbd7 6.dxe5
dxe5 Diagramm



7.Lxf7+ (7.0-0 0-0 8.De2 c6 9.a4
Dc7 10.Lg5 Sc5 11.h3 Se6 12.Le3
Lb4 13.Sa2 Ld6 14.Sc3 Lb4
15.Sa2 Ld6 16.Sc3 De7 17.Tad1
a6 18.Sh4 Sd4 19.Lxd4 exd4
20.Txd4 Lc5 21.Td2 b5 22.Ld3 b4
23.Sd1 Te8 24.Te1 De5 25.Sf3

Df4 26.e5 Ta7 27.Le4 Sxe4
 28.Dxe4 Dxe4 29.Txe4 Le6 30.Se3
 Tae7 31.b3 1/2-1/2 Ranieri,F (2261)-
 Scalcione,M (2357)/Corsico 2007/
 CBM 120 ext) 7...Kxf7 8.Sg5+ Kg6
 9.f4 exf4 10.Se6 Dg8 11.Sd5 Ld6
 12.Sexc7 Lxc7?! (\triangle 12...Df7)
 13.Se7+ Kf7 14.Sxg8 Txxg8 15.Dd3
 La5+ 16.Ld2 Lxd2+?± (16...Sc5!=)
 17.Dxd2 Te8 18.0-0-0 Sb6?+-
 (\triangle 18...Sxe4±) 19.Tde1 g5? 20.h4
 Sxe4 21.Db4?!± Lf5 22.hxg5
 (22.g4!) 22...Tac8 23.Da5 Tc5
 24.Dxa7 Sd7 25.Td1 Tec8 26.c3
 Se5??+- 27.Thf1?!± f3??+- 28.gxf3
 Sxc3 29.bxc3 Tb5 30.Dd4 Tb1+??
 31.Kd2 Sc4+ 32.Dxc4+?!
 (32.Ke1!!) 32...Txc4 33.Txb1 Lxb1
 34.Txb1 Ta4 35.Txb7+ Kg6 36.Tb5
 Txa2+ 37.Ke3 Tc2 38.Tc5 Kh5
 39.Kf4 Kh4 40.Tc6 Kh3 41.Th6+
 Kg2 42.Txh7 Txc3 43.Kg4
 1-0 Mione,D (2254)-Scalcione,M
 (2357)/Corsico 2007/CBM 120 ext]



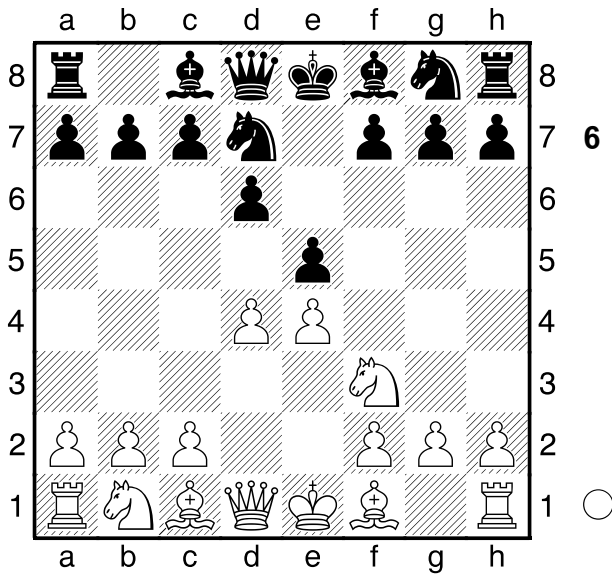
13.Sc4 Le7 14.Se3 h5 15.Sd5
 Sxd5 16.exd5 Lf5 17.Db3 Dg6
 18.Te1 e4 19.Sd4 Lh3 20.g3 h4
 21.Dc2 hxg3 22.fxg3 f5 23.Se6
 Ld6 24.Lf4 Se5 25.Le2 Kf7 26.Dd2
 Lg4 27.Lxe5 Lxe5 28.Lxg4 Dxg4
 29.Tac1 Th5 30.De2 Dxe2 31.Txe2
 Tah8 32.Tcc2 Ld6 33.a3 Kf6
 34.Tg2 T5h6 35.Kf1 b5 36.Sd4 a6
 37.Sc6 g5 38.Tge2 Te8 39.c4 bxc4
 40.Txc4 e3 41.Kg2 f4 42.Kf3 Teh8
 43.h4 g4+ 44.Ke4 Te8+ 45.Kd3 f3
 46.Txe3 f2 47.Tc1 Txe3+ 48.Kxe3
 Lxg3 49.Sb8 Ke5 50.h5 Lf4+
 0-1 De Sallier,F (2134)-Munoz Orts,G
 (2166)/Calvia 2007/CBM 120 ext]
 [3...Sd7 Diagramm

(Diagramm 6)

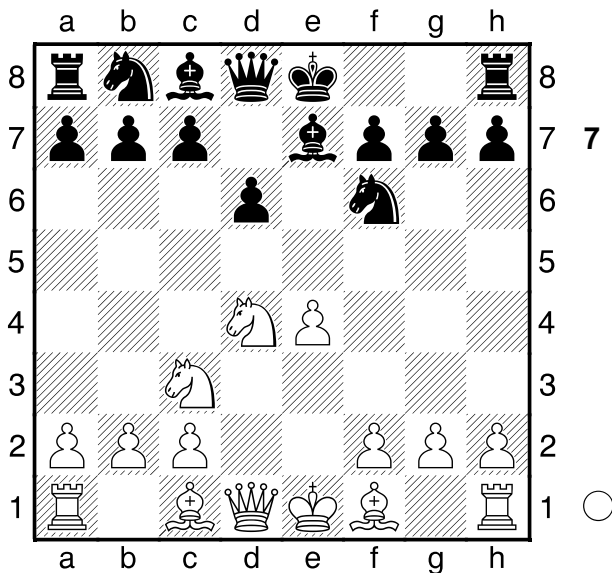
3...exd4

[3...De7 Diagramm
 4.Dd3 Sd7 5.c3 Sgf6 6.dxe5 dxe5
 7.Sbd2 Sc5 8.Dc2 Lg4 9.Le2 Sh5
 10.b4 Sd7 11.0-0 Sf4 12.Ld1 Df6

4.Lc4 c6 5.0-0 Le7 6.dxe5 dxe5
 7.Sg5 Lxg5 8.Dh5 g6 9.Dxg5 Dxg5
 10.Lxg5 Sf8?± 11.Td1 Le6 12.Le2
 Sd7 13.a4 Sgf6 14.f3 h6 15.Le3
 g5 16.Sa3 a6 17.Sc4 Lxc4?+-
 (\triangle 17...0-0-0±) 18.Lxc4 Ke7 19.a5
 Tad8 20.Ta3 Se8?? 21.Tad3 Sef6
 22.Tb3 Se8 23.Txb7 1-0 Geske,J
 (2390)-Beckers,M (2045)/25. Stauffer-
 Open 2013]



4.Sxd4 Sf6 5.Sc3 Le7 Diagramm

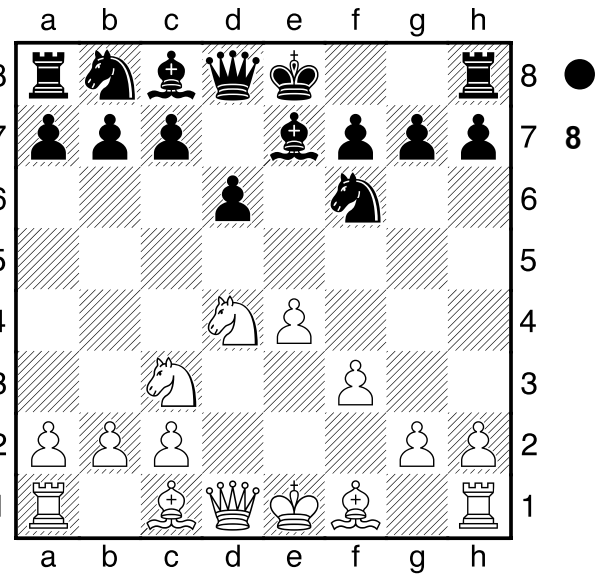


6.Lc4

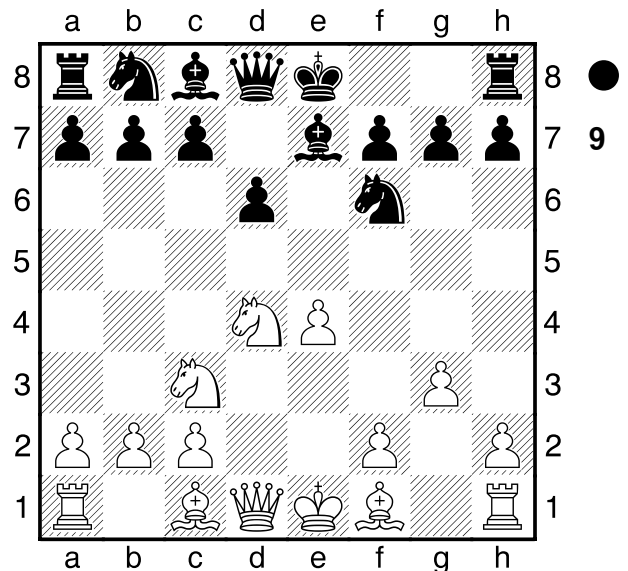
[6.f3 Diagramm

(Diagramm 8)

0-0 7.Le3 a6 8.Dd2 Sbd7 9.0-0-0
Te8 10.h4 Se5 11.h5 b5 12.Ld3
Lf8 13.Kb1 De7 14.Lg5 h6 15.Lh4
Lb7 16.Sf5 De6 17.Sd4 Dd7
18.Lxf6 gxf6 19.Sf5 Kh7 20.Le2 b4
21.Sd5 Lxd5 22.Dxd5 c6 23.Dd2
c5 24.Dd5 Ted8 25.Td2 De6
26.Thd1 De8 27.Db3 a5 28.De3 c4
29.Txd6 Txd6 30.Txd6 b3 31.cxb3



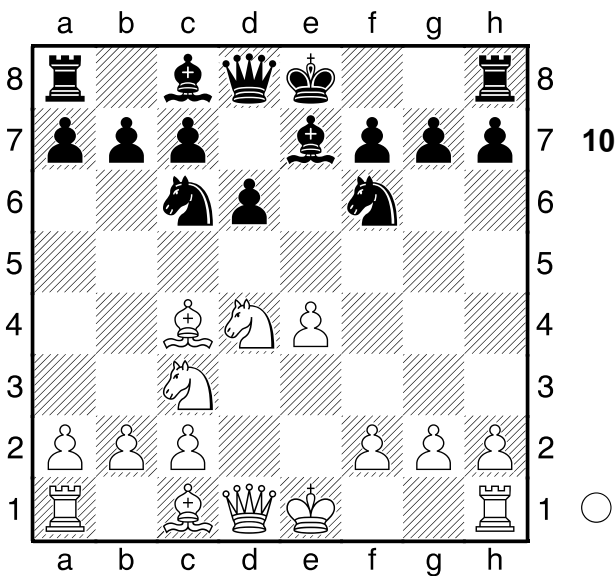
cxb3 32.Txf6 bxa2+ 33.Kxa2 Da4+
34.Kb1 Tc8 35.Txh6+ Kg8 36.Dg5+
Sg6 37.Txg6+ ffg6 38.Dxg6+ Kh8
39.Df6+ Kh7 40.Df7+ Kh8 41.b3
Db4 42.Lc4 De1+ 43.Kb2 Dd2+
44.Kb1 Dd1+ 45.Kb2 Dd2+
1/2-1/2 Mendege,A (1877)-Dobos,O
(1842)/Budapest 2007/CBM 120 ext]
[6.g3 Diagramm



0-0 7.Lg2 Te8 8.0-0 Lf8 9.h3 c5
10.Sde2 Sc6 11.g4 Le6 12.g5 Sd7
13.Sg3 f6 14.h4 Tb8 15.f4 Kh8
16.Sd5 Se7 17.Se3 Lf7 18.b3 Sg8
19.Lb2 Sb6 20.a4 a5 21.c4 Sd7
22.Dd2 Ta8 23.Lc3 Ta6 24.Tad1

Le6 25.Tf2 Lf7 26.Db2 Le6 27.Sef5
 h6 28.Tfd2 Kh7 29.Sxd6 Lxd6
 30.Txd6 Lg4 31.Txa6 bxa6 32.Td2
 hxg5 33.hxg5 fxg5 34.e5 gxf4
 35.Le4+ g6 36.e6 Txe6 37.Th2+
 Sh6 38.Lg7 Sf6 39.Txh6+ Kxg7
 40.Txg6+ Kf7 0-1 Hillarp Persson,T
 (2567)-Mamedjarova,Z (2342)/
 Hoogeveen 2007/CBM 120 ext]

6...Sc6 Diagramm



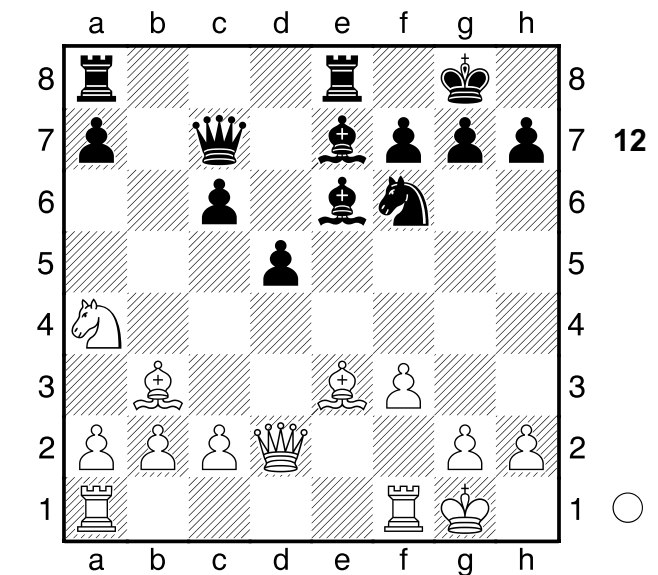
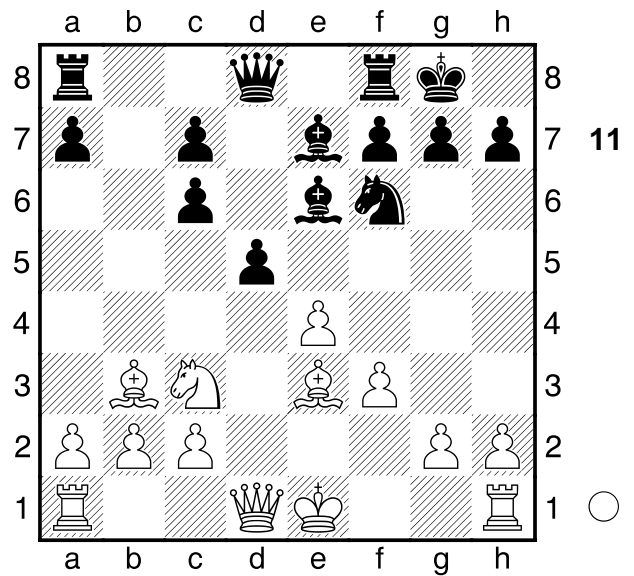
**7.Sxc6 bxc6 8.f3 Le6 9.Lb3 0-0
 10.Le3 d5 Diagramm**

(Diagramm 11)

11.exd5?! ♠ cxd5 12.Sa4? ♠
 [♠12.De2]
12...Te8?! ♠
 [♠12...c5]
13.0-0 c6 14.Dd2 Dc7 Diagramm

(Diagramm 12)

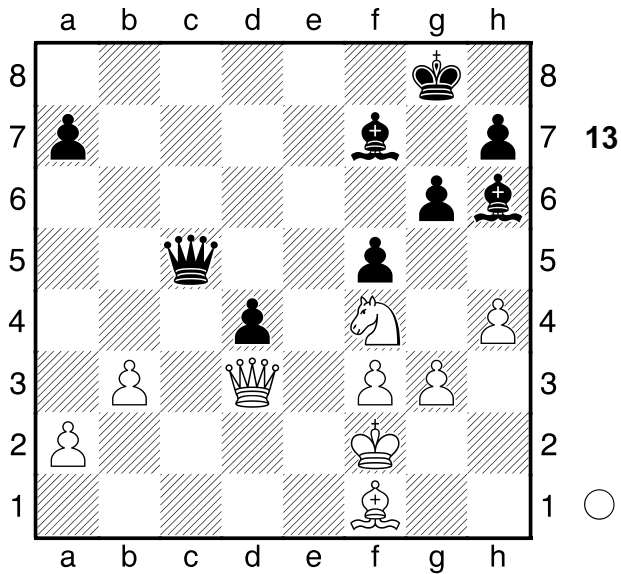
15.Df2
 [♠15.Lc5]
 [od. auch **15.Lf4**]
15...Ld6 16.g3 Sd7 17.Tfd1 f5
18.Lc5?! ♠ jetzt nicht mehr so gut!
 [etw. ♠18.Dd2]
18...Sxc5 19.Sxc5 Lf7 20.Te1 Txe1+



**21.Txe1 Te8 22.Txe8+ Lxe8 23.Kg2
 De7 24.Sd3 Lf7 25.c3 c5 26.Lc2 g6
 27.Dd2 Db7 28.b3 Lf8 29.Sf4 Lg7
 30.h4 Dc6 31.Se2 d4 32.cxd4 cxd4
 33.Sf4 Lh6 34.Ld3 Dd6 35.Kf2 Ld5
 36.Lf1 Dc5 37.Dd3 Lf7 Diagramm**

(Diagramm 13)

38.Se2??-+ ♠
 [♠38.Db5 ♠]
**38...Le3+ 39.Kg2 Kg7 40.Kh2
 Ld5?! ♠**
 [♠40...De5]
41.Lg2??-+ ♠



[41.Sf4 Lxf4 42.gxf4~~+~~]
 41...Lc6 42.a4 a5 43.Kh1 Ld5
 44.Da6 Lxb3 45.Db7+ Lf7 46.f4 Db4
 47.Df3 Dxa4 48.Kh2 Dc4 49.g4
 fxg4 50.De4 De6 51.Dd3 Dd6
 52.Kg3 a4 53.Le4 0-1 Paaske,A
 (2144)-Keogh,E (2095)/EU-Cup 2007.