

B20

Mühlböck, Dietmar **1706**
 Bumberger, Emmerich **1813**
 KLN;ASV2-WLS2 (10.1) 16.03.2019
 [F11;ewg]

1.e4 c5 2.f4 a6?!± 3.Sf3 b5?!±
 konsequente FortStzg. 1 zweifelhaften
 EröffngFührg. **4.c3?=** W schmeisst
 den EröffngVorteil weg.

[△4.Le2]

[od. 4.a4]

4...Lb7 5.d3 e6 6.Sa3 Sc6 7.Sc2
Sf6 8.g3?! Le7 9.Lg2 Db6 10.De2
h6 11.0-0 Td8 12.h3 0-0 13.Kh2?!±

[△13.e5 Sd5 14.Se3 Tfe8 15.Sxd5
exd5 16.Ld2 a5 17.Tfc1 Lc8 18.d4
d6= (45':-0,2)]

13...Dc7

[△13...d5 14.e5 Sd7 15.Le3 a5
16.Lf2 Tc8 (od. **16...Tfe8 17.Tab1**
Tc8±) 17.Tab1 a4±]

14.Se3 Sh7?!=

[△14...d5 15.exd5 exd5 16.a4 Tfe8
17.axb5 axb5 18.Ld2 Ld6 19.d4
cxd4 20.cxd4± (30':-0,42)]

15.f5?!±

[△15.a4 Sa5 16.Sd2 Ta8 17.e5
Lxg2 18.Kxg2 f6 19.Sf3 Dc6
20.Kg1 bxa4=]

[od. 15.d4 Sa5 16.dxc5 Lxc5
17.Sc2 Lb6 18.Sfd4 Sf6 19.a4
bxa4 20.Txa4 d6=]

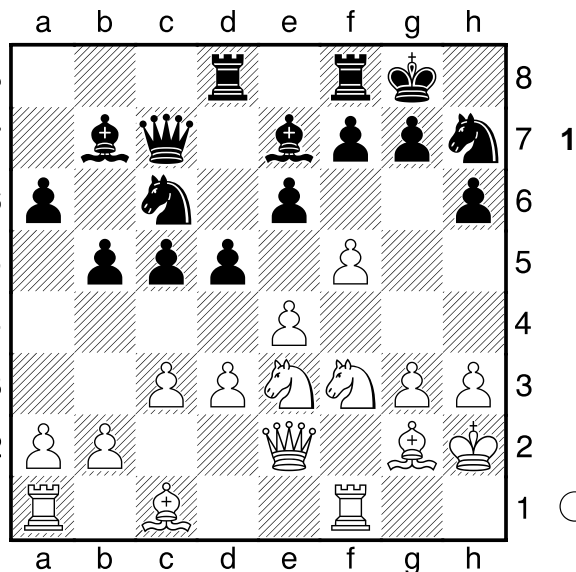
[od.auch 15.Ld2 d6 16.f5 Sf6
17.fxe6 fxe6 18.Sh4 Kh7 19.a4
Ta8 20.Kg1 Db6=]

15...d5?!= Diagramm

[△15...Ld6 16.De1 Sf6 17.Sg4
Sxg4+ 18.hxg4 exf5 19.gxf5 Tfe8
20.Ld2 f6 (15':-0,37)]

[od. 15...h5 16.Ld2 Ld6 17.Le1 Sf6
18.Td1 Tc8 19.a4 c4 20.Lf2 Sa5
21.fxe6 fxe6± (15':-0,4)]

16.Sg4?±



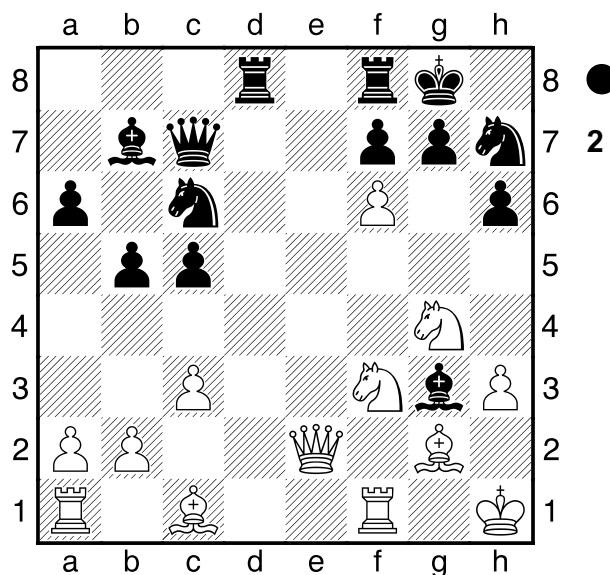
[△16.fxe6 dxe4 17.exf7+ Txf7
18.dxe4 Ld6 19.Sf5 Txf5 20.exf5
Lxg3+ 21.Kh1 Sf6=]

16...dxe4 17.dxe4 exf5 18.exf5??-+

[△18.Lf4 Ld6 19.Lxd6 Txd6
20.exf5±]

18...Ld6 19.f6 Lxg3+ 20.Kh1

Diagramm

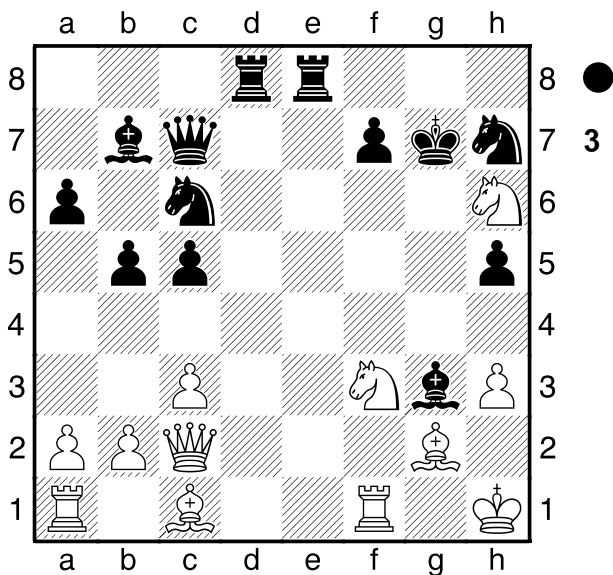


h5??±

[20...Tfe8! 21.Dc2 h5 22.Se3 g6
23.Sg1 Td6 24.Sd5 Dd7 25.Se7+
Sxe7 26.fxe7 h4 27.a4 b4 28.cxb4
cxb4 29.Lxb7 Dxb7+ 30.Dg2
Dxe7-+ (15':-3,25)]

21.fxg7 Tfe8 22.Sh6+ Kxg7 23.Dc2

Diagramm



Te6 logischer als lt.Mitschift

[23...Te7??+- nach Mitschift; aber m. welcher Δ? 24.Sh4 Te1 25.S4f5+ Kh8

A) ♖26.Txe1 Lxe1 27.Lf4 Dxf4 28.Sxf7+ Kg8 29.Sxd8 Sxd8 (29...Lc8 30.Sxc6 Lxf5 31.Se7+ Kf7 32.Sxf5 De5+-) 30.Se7+ Kg7 31.Dg6+ Kf8 32.Dg8+ Kxe7 33.Txe1+ (>2h:>12) ;

B) 26.Sxg3 Dxg3 27.Sxf7+ Kg8 28.Lf4 Txf1+ 29.Txf1 Dd3 30.Sh6+ Kg7 31.Df2 Tf8 32.Tg1 Kh8 33.Dh4 Dg6 34.Ld5+- Klappe]

[23...Td7 24.Df5 Se5 25.Dxh5 Sxf3 26.Lxf3 Kh8 27.Lxb7 Dxb7+ 28.Kg1 De4± (1h:032)]

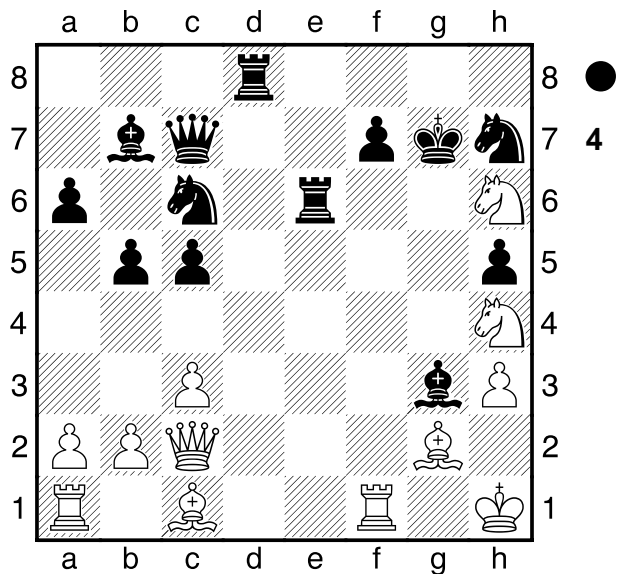
[23...f6 24.a4 b4 25.Sf5+ Kh8 26.Lh6 Sa5 27.Tad1 Le4 28.Txd8 Dxd8]

24.Sh4 Diagramm

(Diagramm 4)

Te1??+- Der vermeintl.starke Zug führt S in den U-Gang!

[24...Sf6 25.S4f5+ Kf8 26.Le3 (≤26.Sxg3 Dxg3 27.Lf4 Dg6=)



26...Se7 27.Sxe7 Dxe7 28.Sf5 Dc7 29.Lxc5+ Dxc5 30.Lxb7± (45':0,31)]

25.S4f5+ Kh8 26.Sxg3

[26.Txe1!! Lxe1 27.Lf4 Dxf4 28.Sxf7+ Kg8 29.Sxd8 Sxd8 (29...Lc8 30.Sxc6 Lxf5 31.Se7+ Kf7 32.Sxf5 De5 33.De4+-) 30.Se7+ Kg7 31.Dg6+ Kf8 32.Dg8+ Kxe7 33.Txe1+ Kf6 34.Dxd8+]

26...Dxg3 27.Sxf7+ Kg8 28.Lf4 Txf1+ 29.Txf1 Dd3 30.Sh6+ Kg7 31.Df2 Tf8 32.Tg1 Kh8 33.Dh4 Dg6 34.Ld5+- Klappe 1-0