

□ Mühlbacher,Hans-Peter

■ Grund,Erwin

VM2018 Linz (2.2)

[F11;ewg]

C01

1576

1558

06.06.2018

1.e4 e6 2.d4 d5 3.exd5 exd5 4.Ld3 Sf6 5.Sf3 Le7 6.c3 Lg4 7.0-0 Sbd7 8.Sbd2 0-0 9.Te1 c5 10.dxc5 Sxc5

Diagramm

(Diagramm 1)

11.Lc2

[◻11.Sb3 Te8 12.Lf4 Db6 13.Le3 Sfe4 14.Sxc5 (14.Le2 Dc7 15.h3 Ld7 16.Sxc5 Lxc5=) 14...Lxc5 15.Db3
Lxe3 16.Txe3 Lxf3=]

11...Dc7 12.h3 Lh5 Diagramm

(Diagramm 2)

13.Sf1?![⚡]

[noch immer ◻13.Sb3 Tfe8 14.Le3 Tad8 15.Sxc5 Lxc5 16.Lxc5 Dxc5 17.Dd4 Db5 18.Ld3 Txe1+ 19.Txe1
Dxb2=]

13...Ld6

[od.etw. ◻13...Tfe8 14.Sg3 Lg6 15.Lxg6 hxg6 16.Lg5 Tad8 17.Sd4 Sfe4 18.Lxe7 Txe7 19.Df3 Tde8]

14.Lg5 Sce4 15.Lxf6 Sxf6 16.Se3 Tad8 17.Sf5 Lc5 18.g4?![⚡] Diagramm

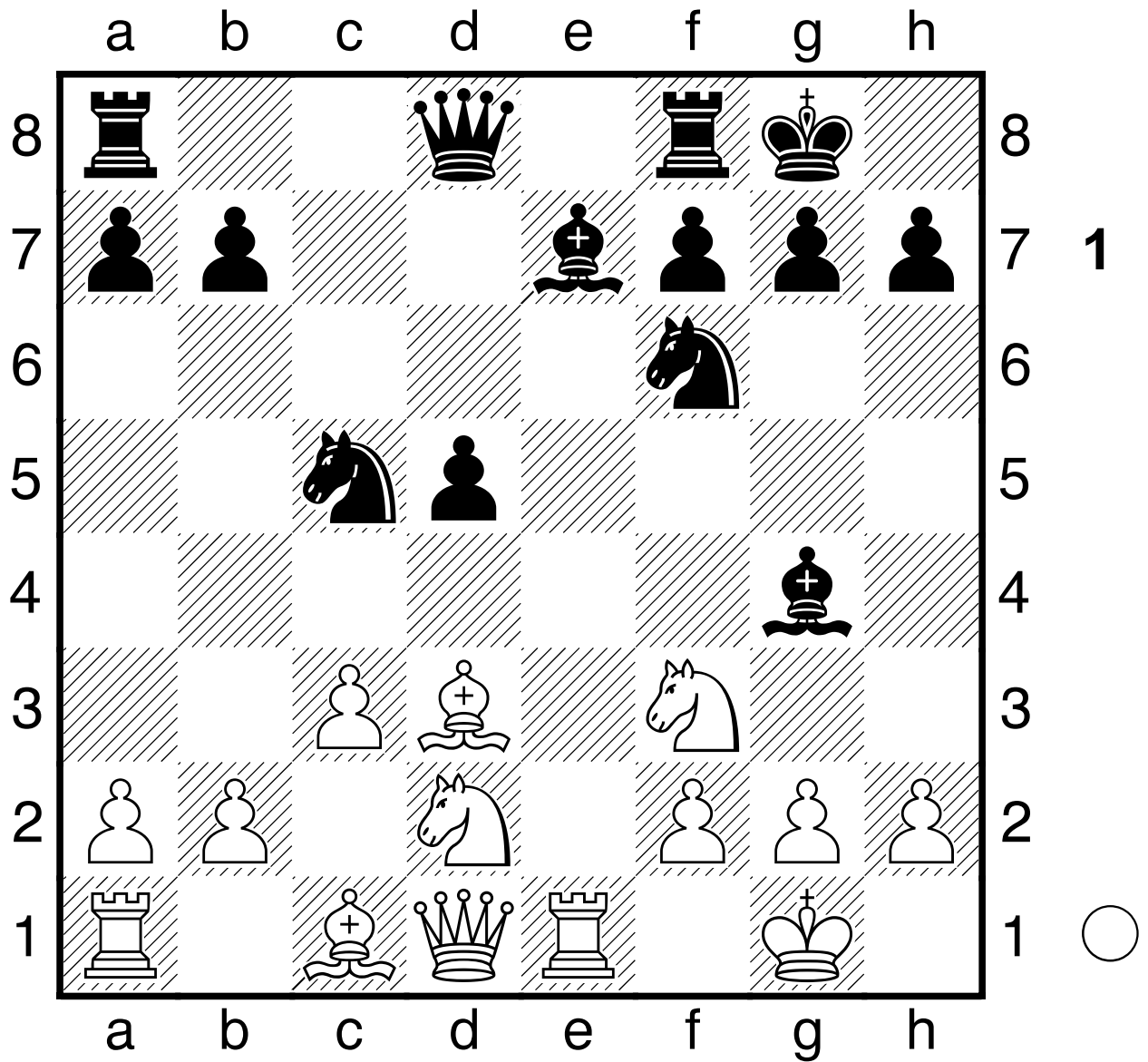
[◻18.b4 Lb6 19.Dd2 Tfe8 20.Txe8+ Txe8 21.S3d4 De5 22.Sg3 Lg6 23.Lxg6 hxg6[⚡] -0,32;30'.]

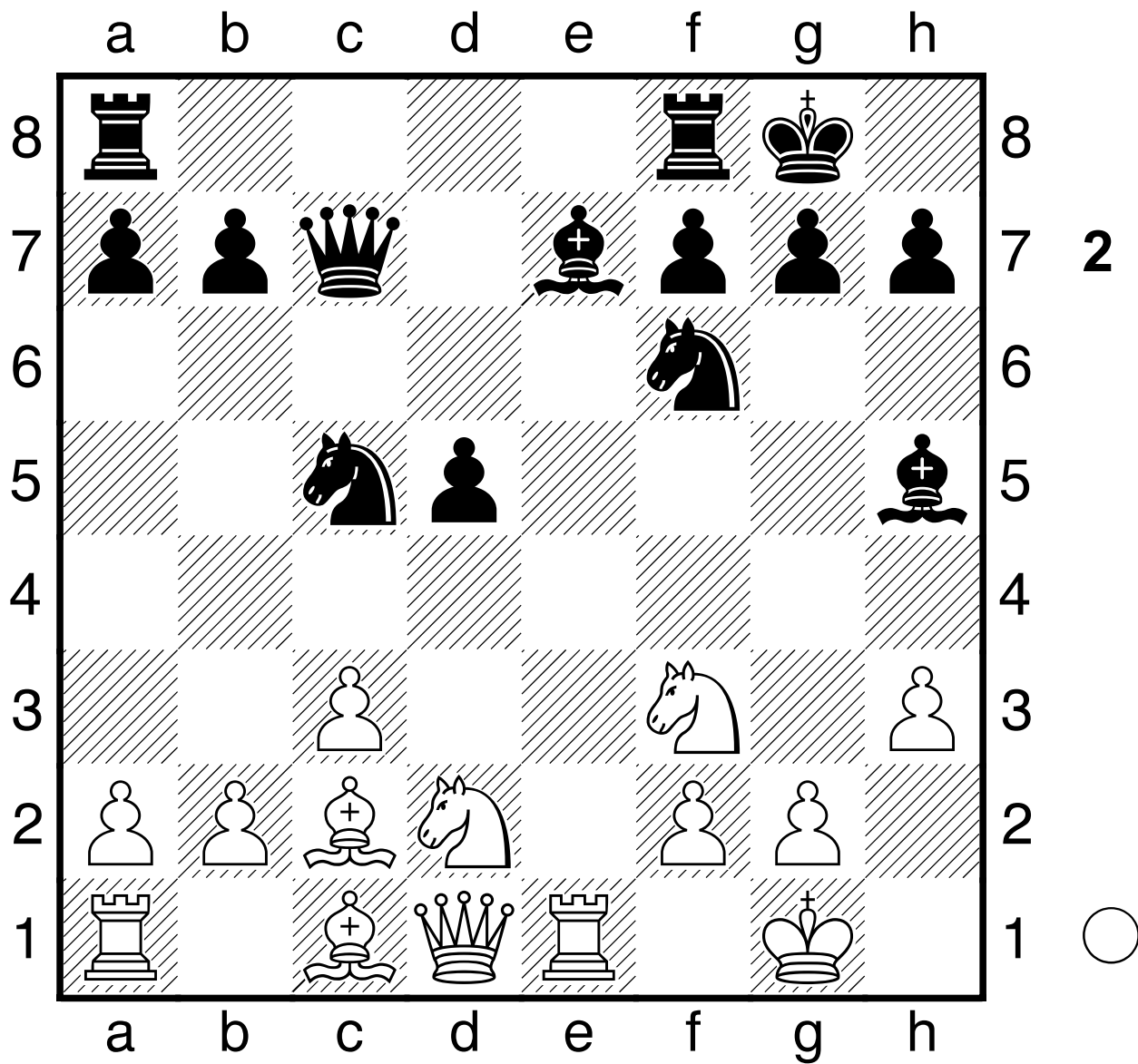
-0,55. Pfeif drauf! 18...Sxg4??[±]

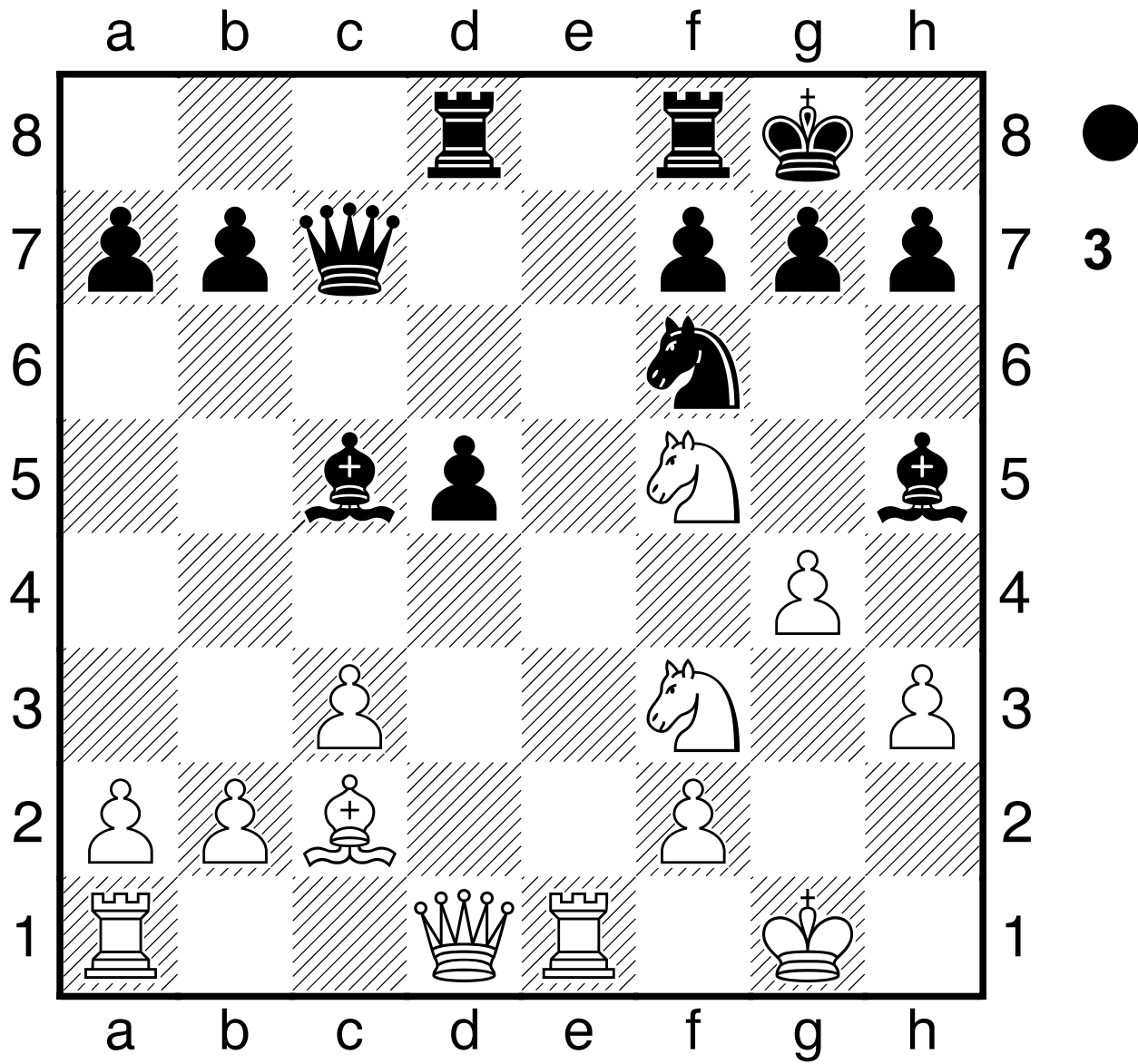
[18...Lg6 19.S3d4 Tfe8 20.Df3 h5 21.Sb3 Lb6 22.Kg2 Te5 23.Tad1 hxg4 24.hxg4 Lxf5 25.Lxf5[⚡] -0,42;1h30'.]

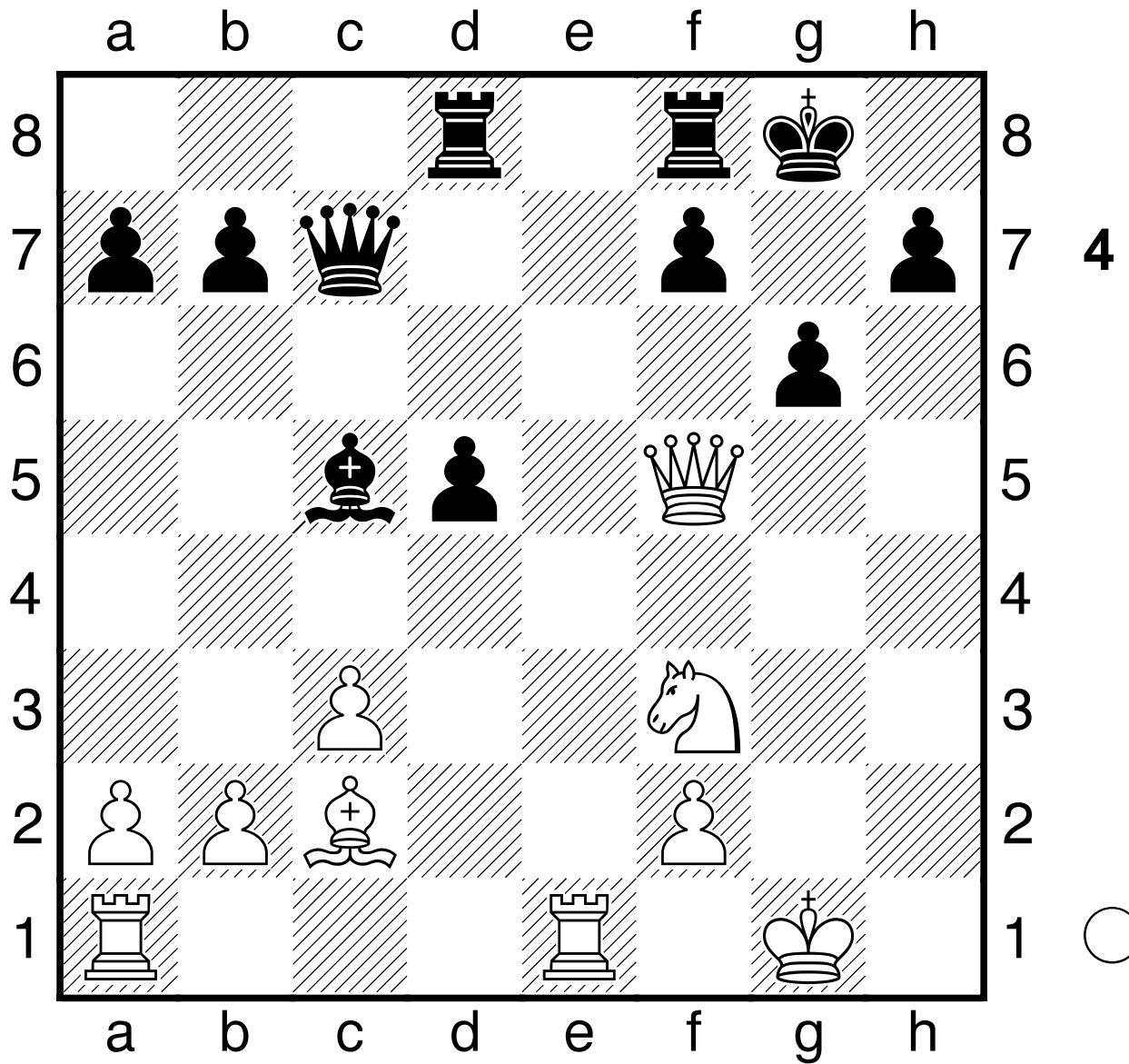
19.hxg4 Lxg4 20.Dd3 Lxf5 21.Dxf5 g6 Diagramm

22.Df6??-+









[22.Dg5! d4 23.Kg2 dxc3 24.bxc3 Ld6 25.Df6 Tde8 26.Tad1 Le7 27.De5 Dxe5 28.Txe5 Lf6+- 1,5;1h.]

[auch gut 22.Dh3!? Db6 23.Tf1 Kg7 24.b4 Le7 25.Tae1 Lf6 26.Se5 Dc7 27.f4 d4 28.Tf3 Lxe5 29.fxe5 dxc3± 0,96;1h.]

22...Dg3+ 23.Kh1 Lxf2 24.Tg1 Lxg1 25.Txg1 Dh3+ 26.Sh2 Diagramm

(Diagramm 5)

Dh5?!?

[26...Tde8 27.Ld1 Te4 28.Tf1 Dg3 29.Df3 Dd6 30.Kg2 h5 31.Dg3 Td8 32.Df2 Dd7-+ -1,7;>2h.]

27.Ld1 Diagramm

(Diagramm 6)

Dh3

[**27...Dh6!?**

A) 28.Df2 a6 29.Lb3 Td6 30.Tf1 Dh5 31.Df3 Dg5 32.Tg1 De5 33.Sg4 Dh5+ 34.Sh2 Dxf3+ 35.Sxf3± -1,04;1h15'. ;

B) 28.Dd4 Tfe8 29.Lf3 a6 30.a3 (30.Lxd5?! Td7 31.Dd1 Te5 32.c4 Tde7 33.Lf3 Dh4 34.Dd2 h5 35.b3 Kg7-+ -1,56;>2h.) 30...De3 31.Td1 Dg5 32.Sg4 Te6 33.Dd2 De7± -1,17;1h15'. ;

C) 28.Tf1 Dg7 29.Dh4 d4 30.Lb3 Kh8 (30...d3?? 31.Txf7 Dxf7 32.Lxf7+ Kxf7+-) 31.Sf3 dxc3 32.bxc3 Td7± -1,03;1h15'. (32...Td3?! 33.Sg5 f5±)]

28.Df4

[**28.Lc2**

A) ≤28...a5 29.Dd4 Tde8 30.Ld1 (30.Dxd5?? Te2 31.Tg2 Tfe8 32.Df3 Dxdg2+ 33.Dxdg2 Txg2 34.Kxdg2 Te2+-+) 30...De3 31.Sf3 Dxd4 32.Sxd4 Te5 33.Lf3 Kg7± -1,18;>2h. ;

B) od. 28...Dh6 29.La4 De3 30.Ld1 De6 31.Dd4 De4+ 32.Sf3 Dxd4 33.Sxd4 Tfe8± -1,11;>2h. ;

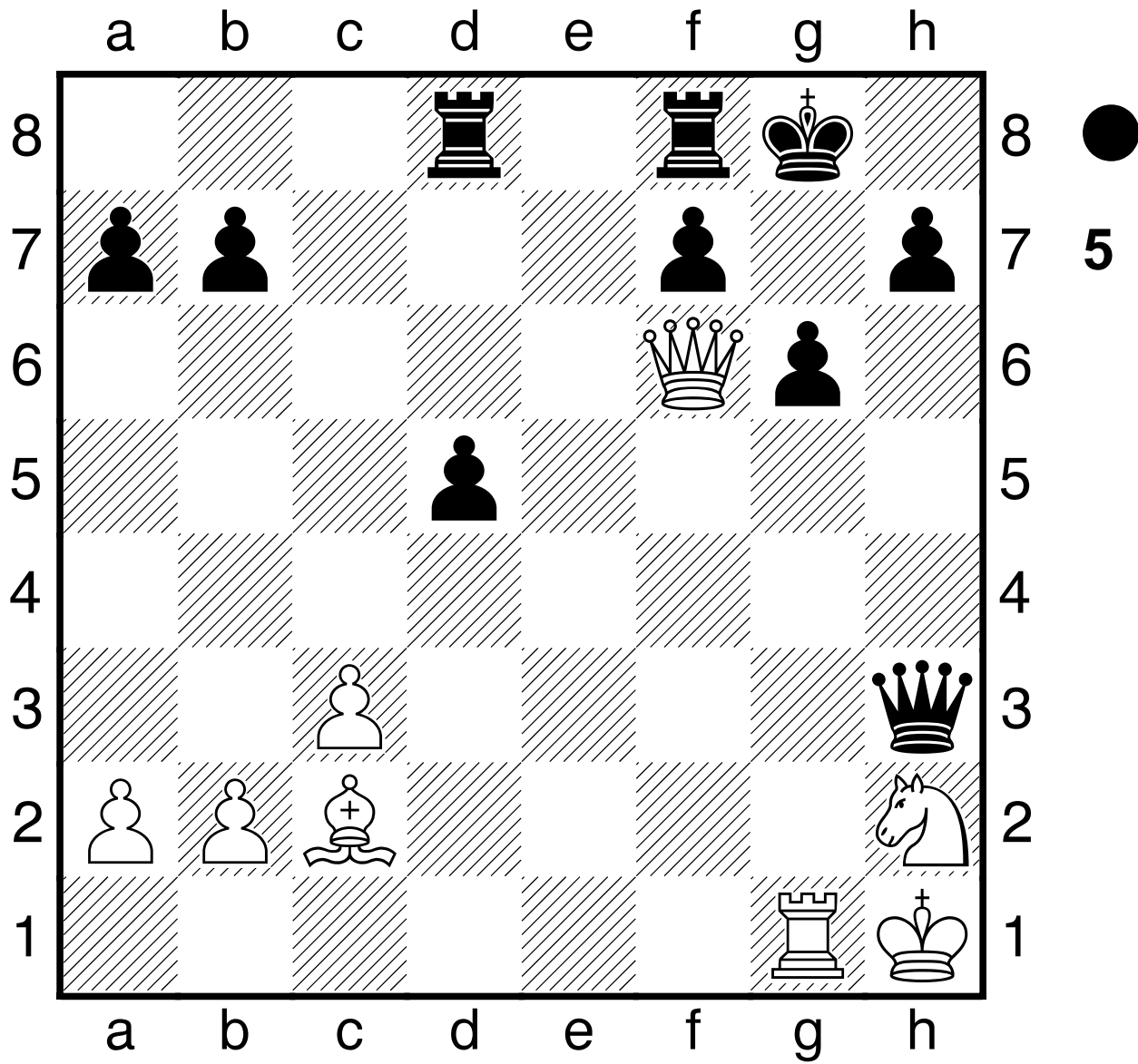
C) 28...Tde8 29.Ld1 Te4 30.Tf1 Dg3 31.Df3 Dd6 32.Kg2 h5 33.Dg3 Td8 34.Dxd6 Txd6-+ -1,56;>2h.]

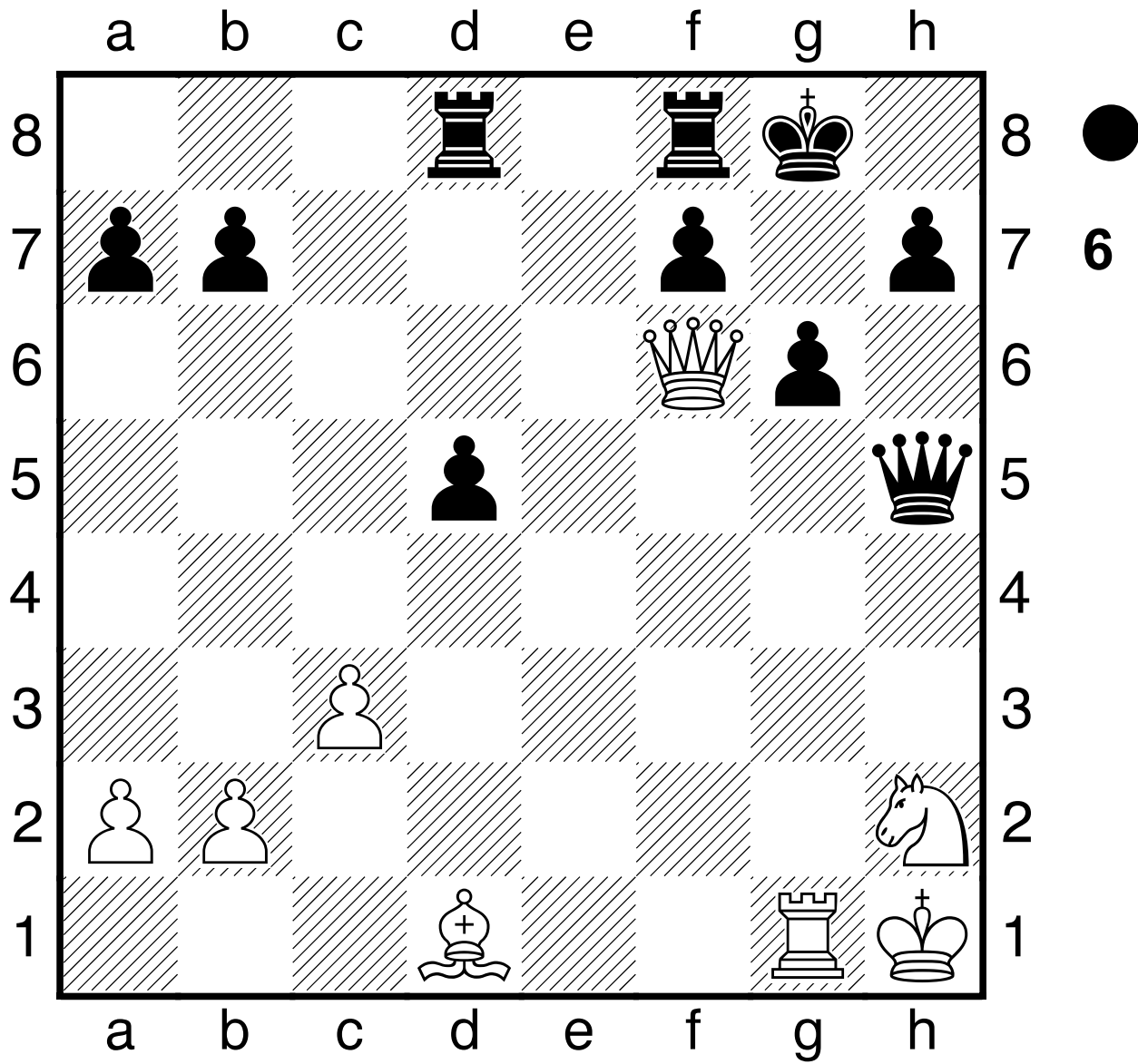
28...De6 29.Sg4 Diagramm

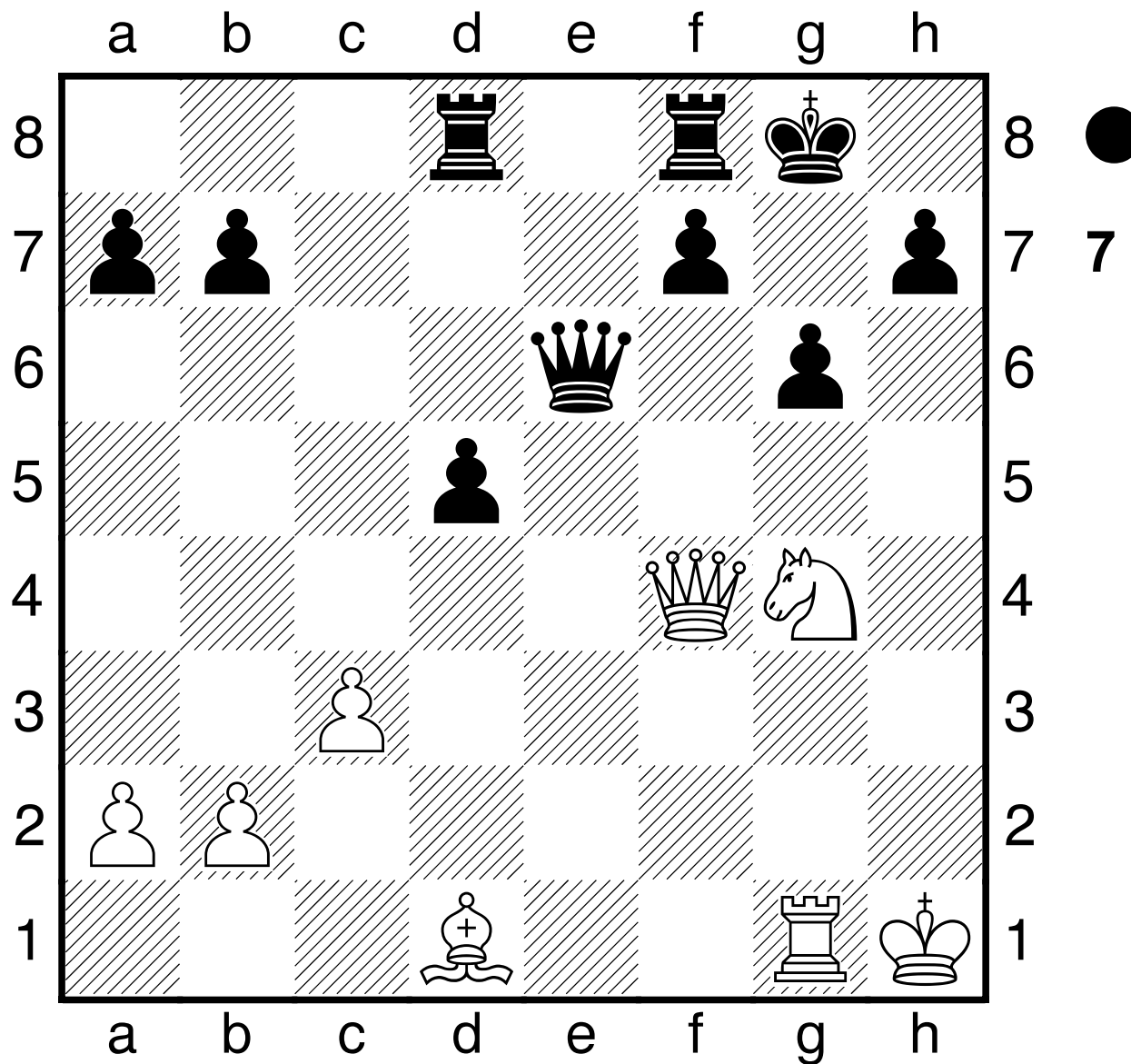
f5?!?

[⊲29...De4+ 30.Dxe4 dxe4 31.Sf6+ Kg7 32.Sxe4 Tfe8 33.Lc2 f5 34.Sg3 Kf6-+ -1,65;>2h.]

30.De5?-+







[♖30.Se3 Tde8 31.Sg2 Df6 32.Dd2 d4 33.cxd4 f4 34.Tf1 g5 35.d5 Kg7 ♜-1,12;>2h.]

[od. 30.Se5 Tfe8 31.Sf3 Te7 32.Dd4 De3 33.Kg2 Dxd4 34.Sxd4 Kg7 35.Lf3 Kf6~~+~~ -1,2;>2h.]
30...Dxe5 31.Sxe5 Tfe8 Diagramm
 [31...d4!]

(Diagramm 8)

32.Te1 Diagramm

(Diagramm 9)

Kg7

[\triangle 32...d4! 33.c4 Te7 34.Sf3 Txe1+ 35.Sxe1 Te8 36.Sd3 Te3 37.Lc2 Te2 38.Lb3 Kg7-+ -3,89;1h30'.]
33.Kg2 a6 34.Kf2 d4 35.c4 d3 36.Sf3 Kf6 37.Txe8 Txe8 38.Se1 Diagramm

(Diagramm 10)

Txe1??= S sticht der Hafer & vertraut fälschlich auf seine 3 Fr-B.

[38...d2! 39.Sf3 Td8 40.Ke2 g5 41.Sxd2 h5 42.Lc2 h4 43.Sf1 g4 44.c5 g3 45.Kf3 f4 46.Kg2 Ke5 47.Kh3 f3
 48.Sxg3 hxg3 49.Kxg3 f2 50.Kxf2 Td2+ 51.Ke3 Txc2]

39.Kxe1 Ke5 40.Kd2

[\triangle 40.c5! blockiert Bb7,um ihn dem wL zum Frass vorzuwerfen.

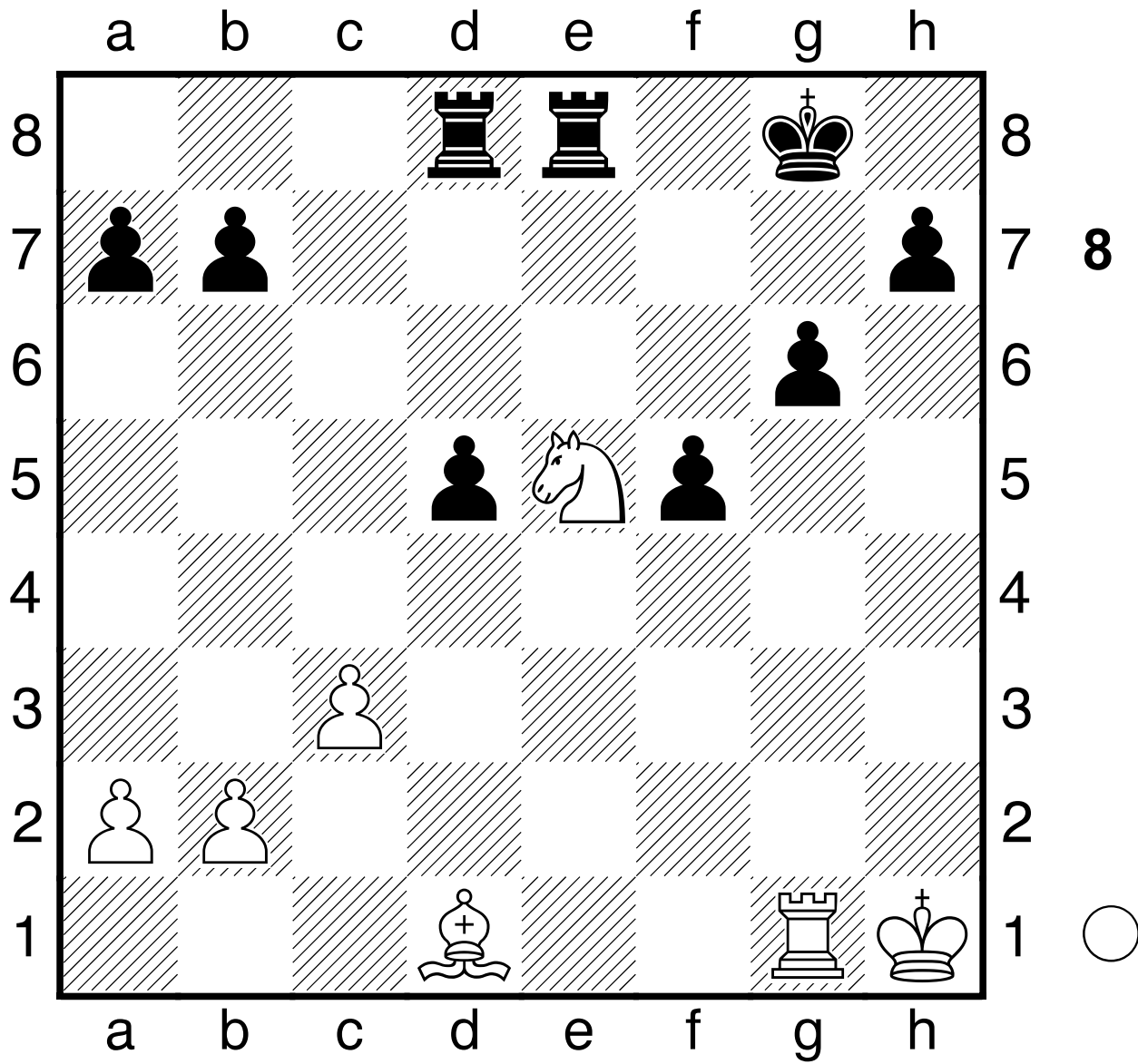
A) 40...Ke4 41.Kf2 d2 42.Ke2 g5 43.b4 g4 44.Kxd2 h5 45.La4 Kf3 (45...h4 46.Ld7 h3 47.Ke2 g3 48.Lc8 f4
 49.Lxb7+ Ke5 50.Lc8 Ke4 51.Lxh3 f3+ 52.Kf1 Ke3 53.c6) 46.Ld7 f4 47.Lc8 g3 48.Lxb7+ Kf2 49.c6 g2 50.c7
 g1D 51.c8D De1+ 52.Kd3 De3+ 53.Kc4 Dc1+ 54.Kd4 Dxc8 55.Lxc8 f3 56.Lh3+- ;

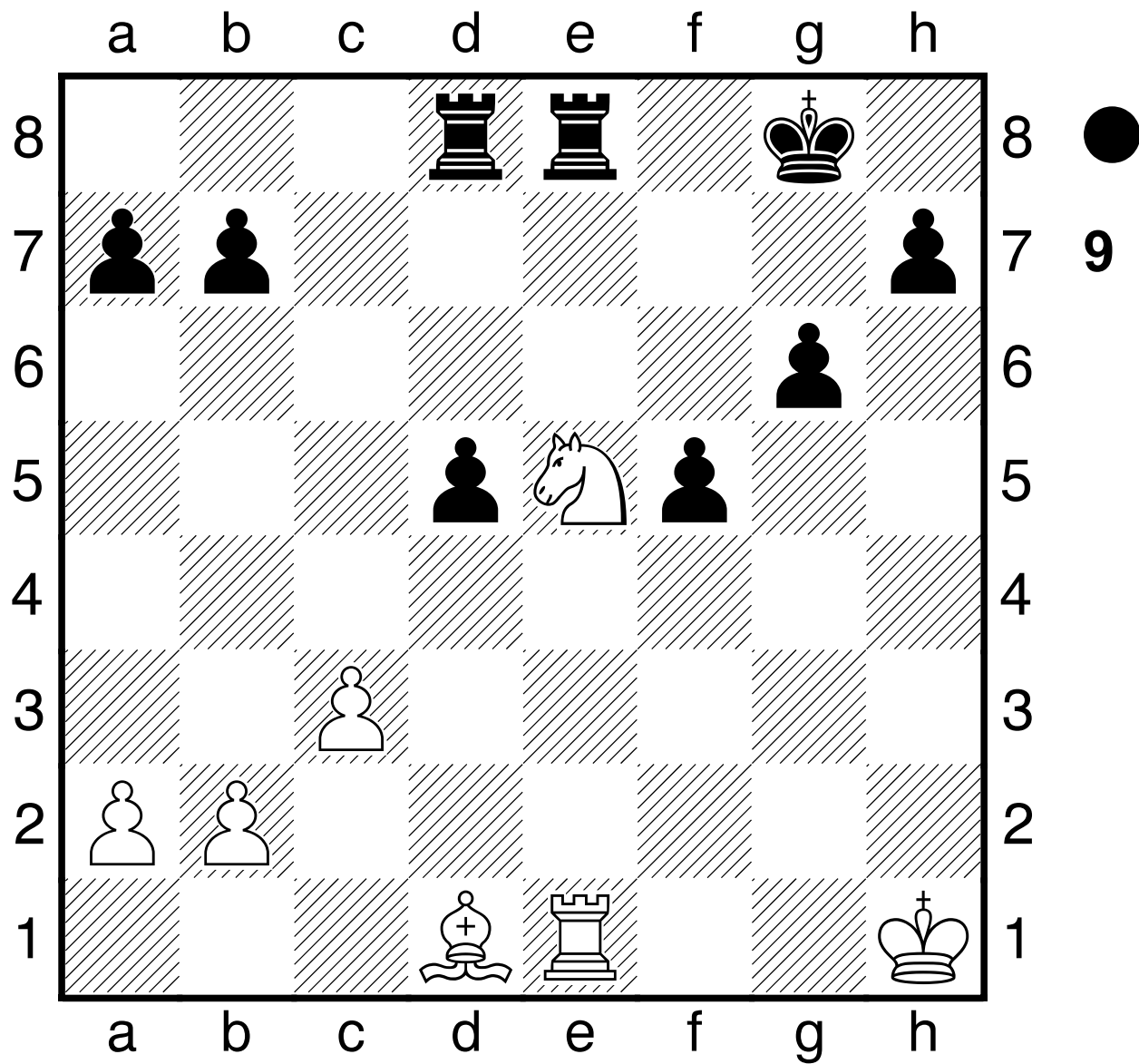
B) 40...a5 41.Lf3 Kd4 42.Kd2 Kxc5 43.Lxb7 Kd4 44.La6 h5 (44...Ke4 45.Lxd3+ Kf3 46.a4 h5 47.b4 axb4
 48.a5+-) 45.Lxd3 h4= 46.La6 g5 47.Ke1 Ke3 48.Lc8 f4 49.a3 f3 50.b4 axb4 51.axb4 Kd4 52.Ld7=]

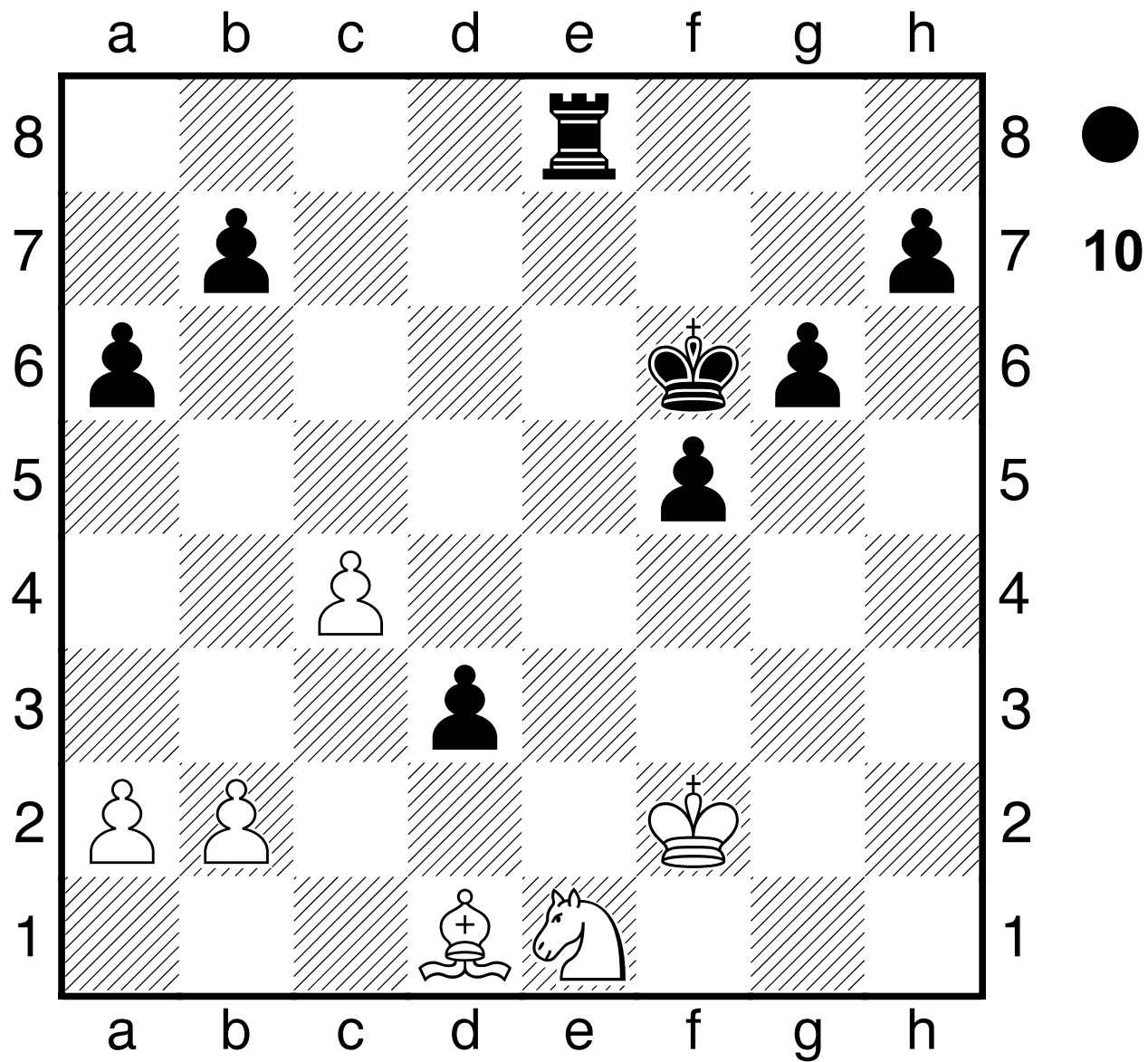
40...Kd4 Diagramm

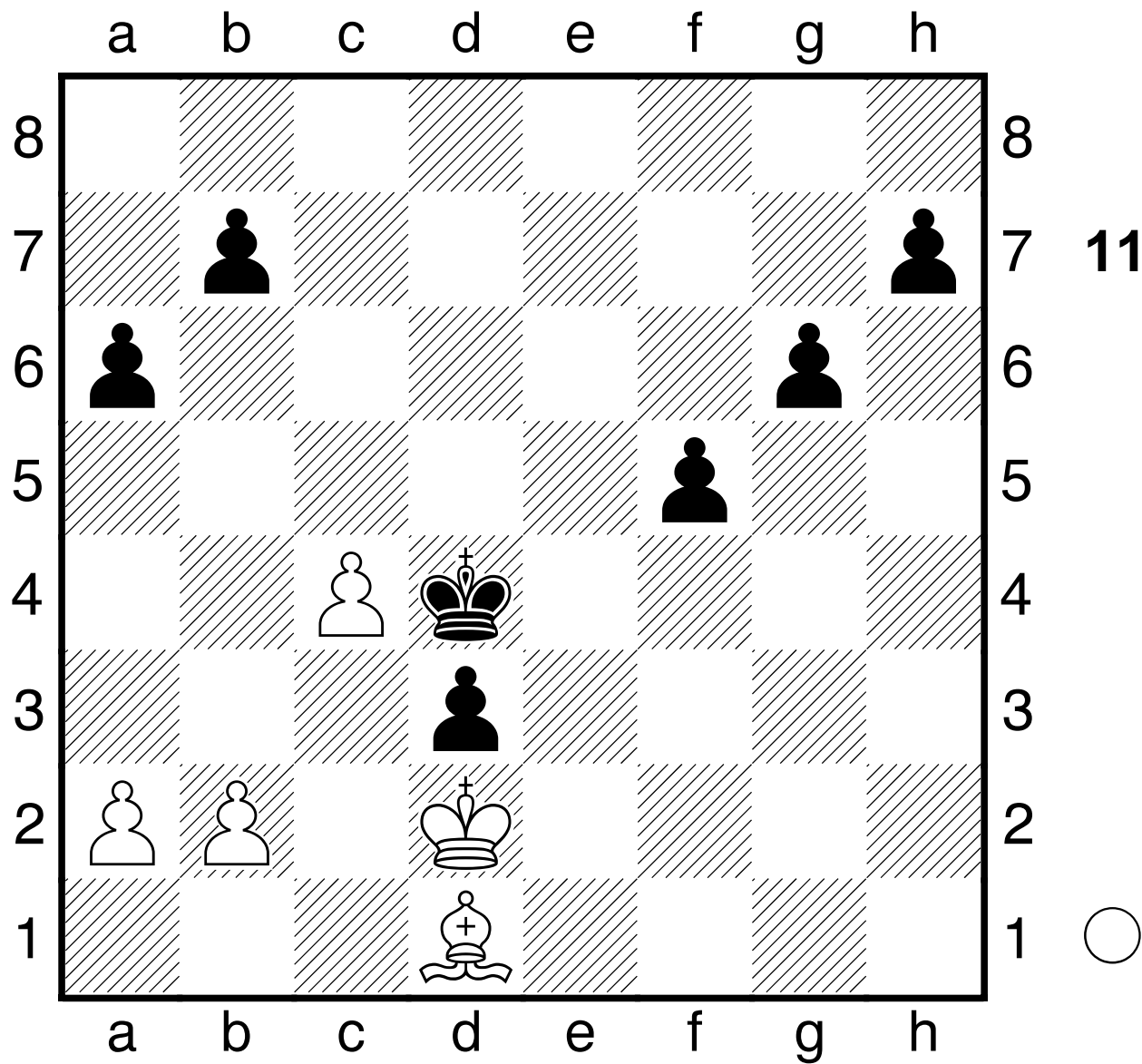
41.b3??-+

[41.c5! Kxc5 42.Kxd3 Kd6 43.Ke3 Ke5 44.Kf3 g5 45.a4 g4+ (45...h5 46.a5 h4 47.Kg2 Kf4 48.Lf3 h3+ 49.Kf2









g4 50.Lxb7 g3+ 51.Ke2 h2 52.b4 Ke5 53.b5 Kd6 54.Lg2+- ; 45...a5 46.Kg3 Kd4 47.Lc2 f4+ 48.Kg4 h6 49.Kf3

*b6 50.Lg6 Ke5 51.b3 Kf6 52.Lc2 h5 53.Ke4 h4 54.Kf3 Ke5 55.Kg4 Kd4 56.Lf5 Ke3 57.Kxg5 f3 58.Lh3 Ke2
59.Kxh4 f2 60.Kg4 f1D 61.Lxf1+ Kxf1 62.Kf3 Ke1 63.Ke3 Kd1 64.Kd3 Kc1 65.Kc3 Kb1 66.Kd4 Kb2 67.Kc4=)
46.Kg3 a5 47.Lc2 h5=]*

41...g5 42.Lf3 b6 43.Ld5?! h5 44.Lf7 h4 45.Lg6 h3 46.Lxf5 h2 1 von auch für andere SchwachSpieler vielleicht unbemerkt gebliebenen Fehlerchen&Fehlern gespickte Partie, in der -Gott seis getrommelt&gepiffen- W den letzten gemacht hat.

0-1