

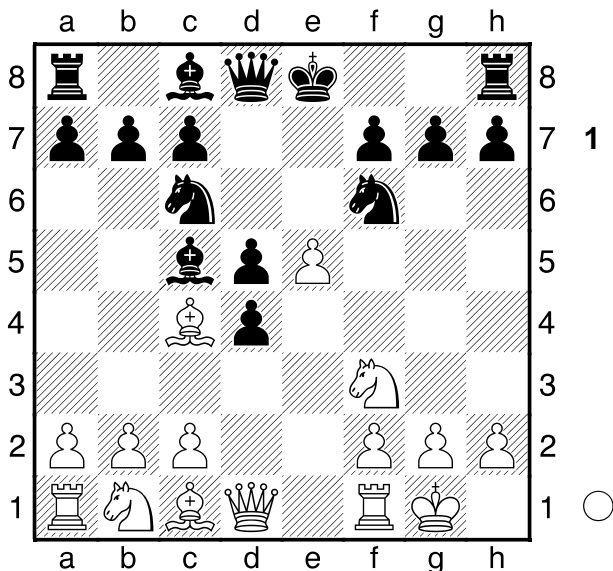
C56

□ **Max-Lange-Angriff,6...d5**

■ **38 Partien**

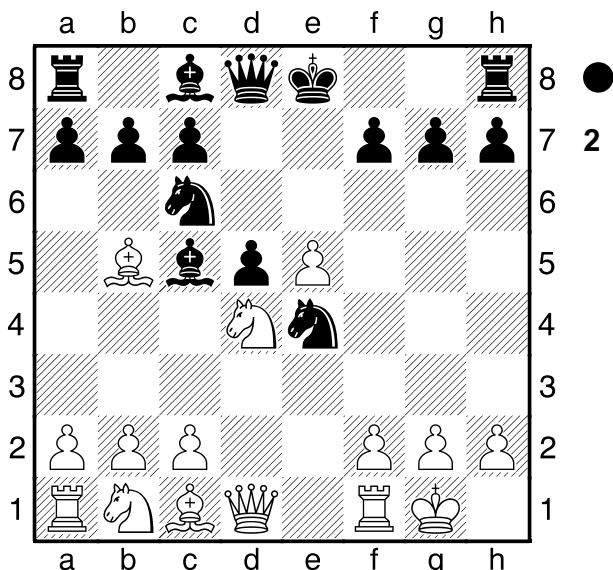
[F11;ewg]

1.e4 e5 2.Sf3 Sc6 3.Lc4 Lc5 4.0-0 Sf6 5.d4 exd4 6.e5 d5 Diagramm



7.exf6

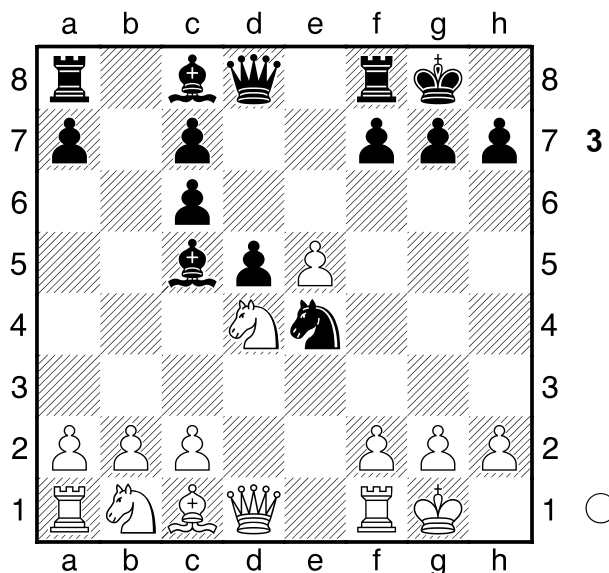
[**7.Lb5 Se4 8.Sxd4 Diagramm**



A) \triangleleft 8...Ld7 9.Lxc6 bxc6 10.f3 Sg5 11.Le3 Lb6 12.Dd2 h6 13.Sb3 0-0 14.Sc3 f6 15.f4 Sf7 16.exf6 Dxf6 17.Sc5 Lf5 18.Ld4 Dg6 (\triangleleft 18...Lxc5 19.Lxc5 Sd6=)

19.Tf3 Dd6?! 20.S3a4 Sh8? \pm 21.Dc3 Tf7 22.Te1 Sg6 23.g3 Taf8 24.Tfe3 Dd8 25.Se6 Lxe6 26.Sxb6 cxb6? \mp - (\triangleleft 26...Lh3 27.Sa4=) 27.Txe6 Se7 28.Le5 d4 29.Db3 Sf5 30.Txc6 Dd7?? 31.Tc7 Dd8 32.Txa7 Se3 33.c3 Sd5 34.Txf7 Txf7 35.Lxd4 Sxf4 36.gxf4 Dh4 37.Te8+ Kh7 38.Dc2+ 1-0 Lopez Silva,H (2348)-Acher,M (2308)/Heraklio 2002/CBM 091 ext ;

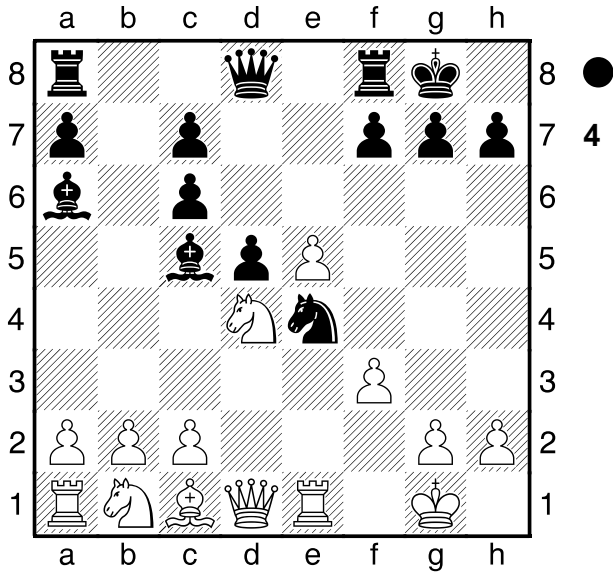
B) 8...0-0 9.Lxc6 bxc6 Diagramm



B1) 10.f3? \mp La6?! \bar{f} 11.Te1??-+ Diagramm

(Diagramm 4)

Sg5?=
 (11...Sf2! 12.Dd2 Dh4 13.c3 Sd3 14.Te3 Lxd4 15.cxd4 Dxd4) 12.f4?! \bar{f} Se6 13.c3 Dh4 (13...f6!/? 14.g3 Tb8 15.b3) 14.g3 Dh3 15.Le3 Lxd4 16.cxd4 f5 17.Dc2 c5 18.dxc5 d4 19.Da4 Sxc5 20.Dxd4 Lb7? \pm 21.Dc4+ Kh8 22.Df1 Dxf1+ 23.Kxf1 Sd3 24.Sc3?=
 Sxe1 25.Txe1 Kg8 26.Kf2 Tfd8 27.Sb5 a6 28.Sxc7 Tac8

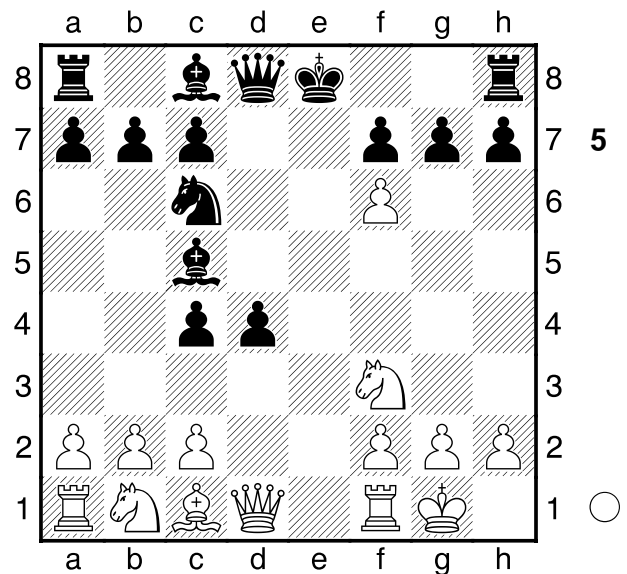


29.Se6 Td5 30.b4 Tc4
 31.Tc1?± Txc1 32.Lxc1 Td1
 33.Sc5 Lc8?! 34.Le3 Ta1 35.a4
 Tb1?= 36.b5??± axb5 37.axb5
 Txb5 38.Kf3 Kf7 39.h3 h5
 40.Ke2 Le6 41.Kd3 Tb1
 42.Sxe6?+ Kxe6 43.Ke2 Kd5
 44.Kf2 Ta1 45.Lb6 Ta6 46.Ld8
 Ke4 47.Lh4 Ta2+ 48.Ke1 Kf3
 49.Kd1 Te2 50.Kc1 Te4 51.Kd2
 Kg2 52.Kd3 Kxh3 53.Kc3 Kg4
 54.Kd3 Kf3 55.Kd2 g6 56.Kd3
 Kf2 57.Kd2 Te3 58.Kc2 Kf3
 59.Kd2 Te4 60.Kd3 Kf2 61.Kd2
 Kf1 62.Kd3 Ke1 63.Kc3 Kd1
 64.Kd3 Kc1 65.Kc3 Kb1 66.Kd3
 Ka2 67.Kd2 Kb3 68.Kd3 Kb4
 69.Lg5 Kc5 70.Lh4 Kd5 71.Lg5
 Ta4 72.Lh4 Ta3+ 73.Kc2 Ke4
 74.Kb2 Ta6 75.Kc3 Tc6+
 76.Kb4 Te6 77.Kc5 Txe5+
 78.fxe5 Kxe5 79.Kc4 Ke4
 80.Kc3 Kf3 81.Kd3 Kg4 82.Ke3
 g5 83.Lxg5 Kxg5 84.Kf3 Kf6
 85.Kf4 Kg6 86.Ke5 Kg5 87.Kd4
 Kg4 88.Ke5 Kxg3 89.Kxf5 h4
 90.Kg5 h3 0-1 Myers,B-Greiff,H
 (2253)/Dos Hermanas 2004/CBM
 099 ext ;
B2) 10.Le3 Ld7 11.f3 Sg5

12.Dd2 (12.Kh1 Lb6 13.b4 Se6
 14.f4 Sxd4 15.Lxd4 Lxd4
 16.Dxd4 Lf5 17.c3 a5 18.Sd2
 De7 19.a3 h6 20.Tfe1 axb4
 21.axb4 Dh4 22.Tf1 Dg4
 23.De3 Dg6 24.Ta7 Txa7
 25.Dxa7 Le4 26.Tf2 Dg4 27.h3
 Dxh3+ 28.Kg1 Dxc3 29.Dxc7
 Dxb4 30.Dxc6 Dd4 31.Db7 Da4
 32.Kh2 Dd4 33.Kg1 Da4
 34.Kh2 Dd4 35.Kg1
 ½-½ Ngo Dieu Hoa-Siti,N/
 Thailand 2005/CBM 106 ext)

12...f6 13.Kh1 h6 14.exf6?!±
 Dxf6 15.Sc3 Tae8 16.Lg1 Lb6
 17.a4 a5 18.Tae1 Sf7 19.Sd1?±
 Sd6 20.b3 c5 21.Sb5 d4
 22.Sa3 Lc6 23.Sb2 Sf5
 24.Sac4 Dh4?± 25.Lf2 Dh5?!±
 26.Sd3 Sh4?± 27.Sce5 Te6
 28.Sxc6 Txc6 29.Lxh4 Dxh4
 30.Se5 Te6 31.Sc4⊕
 1-0 Zelcic,R (2500)-Tatai,S
 (2430)/Buekfuerdo 1995/CBM
 046 ext]

7...dxc4 Diagramm



8.Te1+

[△8.fxg7 Tg8 9.Te1+ Le7 10.Lg5
 Le6 11.Lxe7 Kxe7=]

8...Le6

89.Kb1 Df5+ 90.Ka1
 1/2-1/2 Taddei,B (2247)-Walach,M
 (2367)/Rewal 2007/CBM 120
 ext) 13.Sxd4 Sxd4 14.Txd4 Dg8
 15.g3 Tg4 16.Sc3 c6 17.Se2
 c5 18.Td2 Dg6 19.Sc3 Tg8
 20.Sd5+ Kf8 21.Se3 Te4
 22.Td8+ Kg7 23.Txg8+ Kxg8
 24.Df3 Lg4 25.Sxg4 Dxg4
 26.Dxg4+ Txg4 27.Td1 Tg6
 28.c3 Tb6 29.Td2 a5 30.Kg2
 a4 31.a3 Tb3 32.Kf3 b5 33.Ke4
 b4 34.axb4 cxb4 35.cxb4 Txb4
 36.Kd4 Kg7 37.Kc3 Tb3+
 38.Kxc4 Kg6 39.Kd5 Kf5 40.h3
 h5 41.h4 Tf3 42.Kc4 Tb3
 43.Td5+ Kg4 44.Td2 Kf3
 45.Kd5 Kg2 46.Ke5 Tf3 47.g4
 hxg4 48.h5 Txf2 49.Txf2+ Kxf2
 50.h6 g3 51.h7 g2 52.h8D g1D
 53.Df6+ Ke2 54.Da6+
 1/2-1/2 Kosmo,S (2280)-Nyland,T
 (2124)/Stockholm 2007/CBM 116
 ext ;

C2) 12.Sbd2 Dd5 13.De2
 (13.b3 cxb3 14.axb3 Txg7
 15.Se4 Tag8 16.g3 b6 17.Ta4
 Td8 18.Dc1 f6 19.Df4 Tf7
 20.c4 Dd7 21.Ta2 d3 22.Td2
 a5 23.Dh4 De8 24.Te3 Dg8
 25.Sc3 Kd7 26.De4 1-0 Mueller,
 K (2500)-Hoffmann,M (2477)/
 Germany 2007/CBM 118) 13...d3
 14.cxd3 cxd3 15.De3 Txg7
 16.Tac1 Td8 17.Tc5 Dxa2
 18.Se5 Td6 19.Sxd3 Tg4
 20.Se4 Td5 21.Sc3 Txd3
 22.Dxd3 Td4 23.De3 Dxb2
 1-0 Misanovic,V (2270)-Kachiani
 Gersinska,K (2365)/Belgrade
 1990/TD]

9...Dd5

[9...Dxf6 10.Sxe6 fxe6 11.Dh5+ g6
 12.Dxc5 Tf8 (12...0-0-0 13.Lg5
 1-0 Bustillo,J (1873)-Wrang,O (1635)/

Dos Hermanas 2004/CBM 099 ext)
 13.f3 (13.Tf1 e5 14.Dxc4 0-0-0
 15.Sd2 Df5 16.f3 g5 17.Se4 g4
 18.Sc5 Td6 19.fxg4 Dxf1+ 20.Dxf1
 Txf1+ 21.Kxf1 Sb4 22.Ld2 Sxc2
 23.Tc1 Tc6 24.Txc2 b6 25.b4 bxc5
 26.Txc5 Tf6+ 27.Ke2 e4 28.Td5 e3
 29.Le1 Tf4 30.h3 c6 31.Td6 Kc7
 32.Lg3 Tf2+ 33.Lxf2 Kxd6 34.Lxe3
 1-0 Baranovsky,V (2056)-Shostka,P/
 Kiev 2004/CBM 101 ext) 13...d3
 (13...0-0-0 14.Lg5 Td5 15.Dxd5
 exd5 16.Lxf6 Txf6 1-0 Gondko,K-
 Warakomska,A/Laczna 2002/CBM
 089 ext ; 13...e5 14.Sa3 0-0-0
 15.Sxc4 Tde8 16.Lh6 Tf7 17.Sa5
 Sxa5 18.Dxa5 g5 19.Tad1 Dxh6
 20.Txe5 Txe5 21.Dxe5 Td7
 22.Txd4 Txd4 23.Dxd4 b6 24.b3
 Kb8 25.c4 De6 26.Dd8+ Kb7
 27.Dd5+ Dxd5 28.cxd5 b5 29.Kf2
 Kb6 30.b4 a5 31.a3 axb4 32.axb4
 c5 33.dxc6 Kxc6 34.Ke3 Kd5
 35.Kd3 Ke5 36.g3 h6 37.h3 h5
 38.Ke3 Kd5 39.f4 gxf4+ 40.gxf4 h4
 41.Kd3 Ke6 42.Ke4 Kf6 43.f5 Kf7
 44.Kf4 Kg7 45.Kg5 Kf7 46.Kxh4
 Kf6 47.Kg4 1-0 Koc,S-Barissever,E/
 Kocaeli 2002/CBM 089 ext) 14.Dxc4
 Dd4+ 15.Dxd4 Sxd4 16.Sa3 dxc2
 17.Lg5 Tf5 18.f4 h6 19.Lxh6 0-0-0
 20.Tac1 Tc5 21.Lg7 Se2+ 22.Txe2
 Td1+ 23.Te1 Txe1+ 24.Txe1 c1D
 25.Txc1 Txc1+ 26.Kf2 Kd7 27.g4
 Kc6 28.Kg3 b5 29.b3 b4 30.Sc4
 Tc2 31.Se5+ Kb5 32.Sxg6 Txa2
 33.h4 c5 34.h5 c4 35.bxc4+ Kxc4
 36.h6 b3 37.h7 b2 38.Lxb2 Txb2
 39.h8D 1-0 Hammer,J (1638)-
 Rennemo,J/Roros 2002/CBM 089
 ext]
 [9...Dd6 10.fxg7 Tg8 11.Txe6+
 fxe6 12.Dh5+ Kd7 13.Se4 De5
 14.Sxc5+ Kc8 15.Dxe5 Sxe5
 16.Sxe6 d3 17.cxd3 Sxd3 18.Sa3

Kd7 19.Sf8+ Ke7 20.Lh6 Sxb2
21.f4 Kf7 22.g4 Td8 23.f5 Td4
24.h3 Td3 25.Sxh7 Txa3 26.Sg5+
Ke7 27.Te1+ 1-0 Arnetta,M (2032)-
Brunello,R (1957)/Fiuggi 2007/CBM
119 ext]

[9...Dd7 10.fxg7 Tg8 11.Sxe6 fxe6
12.Dh5+ Df7 13.Dxc5 0-0-0 14.Lh6
Dg6 15.Dg5 Dxc2 16.Sa3 Da4
17.Dg4 Kb8 18.Dxe6 1-0 Valev,V
(1644)-Madsen,T/Sibenik 2007/CBM
120 ext]

10.Sc3

[10.fxg7 Tg8 11.Dh5 (11.Sxh7 Le7
12.Lh6 0-0-0 13.f4 f6 14.Df3 Df5
15.Sf8 Ld5 16.De2 d3 17.cxd3
cxd3 18.Dd1 Lxf8 19.gxf8D Txg2+
20.Kf1 Txf8 0-1 Nesterovskaya,A
(1846)-Blyznyuk,Y/Dniepropetrovsk
2003/CBM 097 ext) 11...0-0-0
12.Dxh7 Lf5 13.Dh6 Lxc2 14.Sh7
Lxh7 15.Dxh7 Sb4 16.b3 c3 17.a3
Sc6 18.b4 Le7 19.Te2 Db3 20.Dd3
Txg7 21.Lh6 Tg6 22.Sd2 Dd5
23.Dh3+ Dd7 0-1 Gunsberg,I-Marco,
G/Monte Carlo 1904/HCL]

10...Df5 11.Sce4 Lb6

[11...Lf8 12.Sxf7 Kxf7 13.Sg5+
Kg8 (13...Kg6 14.Sxe6 gxf6
15.Sxd4 Sxd4 16.Dxd4 Lc5 17.Dh4
The8 18.Ld2 Lb6 19.g4 Lxf2+
20.Dxf2 Dxc2 21.Df4 b5 22.Lc3 f5
23.h4 1-0 Hammer,J (2273)-Bentsen,
O (2185)/Oslo 2005/CBM 105 ext)
14.g4 Dd5 15.Sxe6 Tc8 16.Lf4
gxf6 17.Sxc7 Dd7 18.Se6 Lg7
19.Df3 h6 20.Tad1 b6 21.De4 Te8
22.Df5 Df7 23.Sc7 Txe1+ 24.Txe1
Se5 25.Se6 Sf3+ 26.Kf1 Sxe1
27.Kxe1 d3 28.cxd3 cxd3 29.Ld6
De8 30.Kd2 Da4 31.Dd5 Dc2+
32.Ke3 De2+ 33.Kd4 Dxc4+ 34.Kc3
Kh7 35.Dxd3+ Dg6 36.Dc4 Te8
37.Kb3 b5 38.Dd5 Tc8 39.Lc5 a5
40.a3 a4+ 41.Ka2 Dc2 42.Dd7 Tg8

43.Lf8 Dc4+ 44.Ka1 Df1+
½-½ Leonhardt,P-Jacob,F/Ostende
1907/HCL]

[11...0-0-0 12.g4 (12.fxg7 Thg8
13.Sxc5 Dxc5 14.Sxe6 fxe6 15.Dg4
Df5 16.Dxf5 exf5 17.Lg5 Td6
18.Le7 Sxe7 19.Txe7 Td7 20.Tae1
Txg7 21.Txg7 Txg7 22.Te8+ Kd7
23.Te5 Kd6 24.Txf5 Te7 25.Kf1 c5
26.Tf3 Kd5 27.a4 ½-½ Tatar Kis,S
(2410)-Papp Zoltan,C (2310)/Szeged
1998/CBM 067 ext)

A) 12...Dd5 13.Sxe6 (13.fxg7
Thg8 14.Sxe6 fxe6 15.Sf6 Dd6
16.Sxg8 Txg8 17.Lh6 e5 18.g5
Dd7 19.Df3 d3 20.cxd3 Sd4
21.De4 cxd3 22.Tad1 d2 23.Txd2
Lb4 24.Txd4 exd4 25.Td1 Lc5
26.b4 Lxb4 27.Txd4 Ld6 28.Dd5
Dd8 29.De6+ Kb8 30.Df6 Dc8
31.Te4 a6 32.De6 Dd8 33.Kg2
Ka7 34.Dd5 Dc8 35.h3 Td8
36.De6 Da8 37.g6 hxg6 38.Dxc6
b6 39.Dg4 Dd5 40.Df3 Dxa2
41.Tg4 a5 42.Dc6 Tg8 43.Le3
Le5 44.Ld4 De2 45.De6 Txg7
46.Lxe5 1-0 Hammer,J (2095)-
Gaspariants,G (2293)/Copenhagen
2004/CBM 101 ext) 13...fxe6
½-½ Buchniecek,P (2398)-Voloshin,
L (2455)/Olomouc 2000/CBM 077
ext 14.Lg5 g6 15.Lh6 Lf8 16.Dd2
Se5 17.Kg2 Sxg4 18.Lg5 h6
19.f3 hxg5 20.fxg4 Ld6 21.h3 Lf4
22.Db4 Le3 0-1 Ruiz Alonso,C-
Arraiz Perez,D (1964)/Cullera 2007/
CBM 119 ext ;

B) 12...De5 13.Sxe6 (13.Sf3 Dd5
14.fxg7 Thg8 15.Sf6 Dd6 16.Se4
Dd5 17.Sf6 Dd6 18.Sxg8 Txg8
19.Sg5 Txg7 20.Sxe6 fxe6 21.h3
Dd5 22.De2 d3 23.Dxe6+ Dxe6
24.Txe6 Sd4 25.Te8+ Kd7
26.Te4 Sxc2 27.Txc4 b6 28.Tb1
Te7 29.Lg5 Te2 30.Td1 Te1+

31.Txe1 Sxe1 32.Kf1 Sf3 33.Lf4
Ke6 34.Tc3 Kd5 35.Le3 Ld6
36.Txd3+ Ke4 37.Td1 Le5 38.b3
Sd4 39.Lxd4 Lxd4 40.f4 c5 41.f5
Ke5 42.Kg2 1-0 Lopez Silva,H
(2389)-Valiente,C (2275)/Santiago
de Chile 2007/CBM 120 ext)

13...fxe6

B1) 14.fxg7 Thg8 15.Lh6 d3
(15...Lb4 16.f4 Db5 17.Sf6 d3
18.Sxg8 Dc5+ 19.Kg2 Sd4
20.c3 Dc6+ 21.Kf2 Db6 22.Kg3
Se2+ 23.Txe2 Txxg8 24.cxb4
dxe2 25.Dxe2 e5 26.Dxc4 De3+
27.Kh4 1-0 Jouvel,F-Billot,D
(2041)/Rosny sous Bois 2002/
CBM 091 ext) 16.c3 Le7
(16...Td7 17.Df3 Dd5 18.Df4
Se5 19.Sf6 Sf3+ 20.Kh1 Dc6
21.Te4 Tf7 22.Sxg8 Txf4
23.Lxf4 1-0 Bergez,L (2393)-
Vandevoort,P (2363)/Belgium
2003/CBM 097 ext) 17.Dd2 Dd5
18.Df4 Se5 19.Sd2 Ld6 20.Te4
Td7 21.De3 Sf7 22.Dxa7 b5
23.Da6+ Db7 24.Dxb7+ Kxb7
25.Le3 Txxg7 26.a4 c6 27.h3
Te7 28.axb5 cxb5 29.Ta7+ Kc6
30.Txe7 Lxe7 31.Txe6+ Ld6
32.f4 Sd8 33.Th6 Te7 34.Kf2
Se6 35.Sf3 Kd7 36.f5 Sf8
37.Tf6 Te4 38.Sg5 Txe3
39.Kxe3 Lf4+ 40.Kf2 Ke7
1-0 Bergez,L (2424)-Flear,G
(2519)/Montauban 2000/CBM
076 ext ;

B2) 14.Lg5 g6 15.Sxc5 Dxc5
16.Lh6 Dd5 17.f7 Se5 18.Txe5
Dxe5 19.Df3 Thf8 20.Td1 c5
21.h4 Dd5 22.Df6 e5 23.Lxf8
Txf8 24.Te1 Dxf7 25.Dxf7 Txf7
26.Txe5 b6 27.Kf1 Kd7 28.h5
Kd6 29.hxg6 hxg6 30.Te8 d3
31.cxd3 cxd3 32.Td8+ Td7
33.Tg8 Ke5 34.Ke1 Td6 35.Tf8

a6 36.Kd2 c4 37.g5 b5 38.f4+
Kd4 39.a3 a5 40.Tb8 Td5
41.Tb6 Ke4 42.Txxg6 Kxf4 43.a4
Te5 44.Tf6+ Kxxg5 45.Tc6 Te2+
46.Kd1 Txb2 47.axb5 Kf4
0-1 Hindle,O-Divinsky,N/Havana
1966/MCD]

[11...g6 12.Sxe6 fxe6 13.g4 Dd5
14.f7+ Kd8 15.Sxc5 Dxc5 16.Lh6
Kd7 ½-½ Bruns,M (2117)-Lebrun,R/
The Hague 2004/CBM 101 ext]

12.Sg3

[12.Sxf7 0-0 13.Sg3 Dxf6 14.Lg5
Dxf2+ 15.Kh1 Ld5 16.Tg1 d3
17.cxd3 Dxxg1+ 18.Dxxg1 Lxxg1
19.dxc4 Lxc4 20.Kxxg1 Sd4 21.Se4
Tae8 0-1 Bogdan,D (2410)-Komora,A
(2290)/Szeged 1998/CBM 063 ext]
[12.g4 Dg6 13.Sxe6 fxe6 14.f7+
Kd7 15.Sg5 e5 16.f4 h6 17.f5 Df6
18.Se6 Dxf7 19.a4 a5 20.Df3 Tae8
21.Dd5+ Kc8 22.Dxc4 g6 23.Tf1
gxf5 24.gxf5 Sd8 25.b4 Sxe6
26.bxa5 Lxa5 27.Db5 Lc3 28.fxe6
Dg6+ 0-1 Le,S (1937)-Pingue,R
(1932)/Besancon 2006/CBM 113 ext]

12...Dg6 13.fxxg7 Tg8 14.Dh5 0-0-0
15.Dxxg6 hxg6 16.Sxe6 fxe6 17.Lh6
d3 18.c3 d2 19.Ted1 Se5 20.Se4
Sg4 21.Lxd2 Txxg7 22.h3 Sxf2
23.Sxf2 Tgd7 24.Le3 Lxe3 25.Txd7
Txd7 26.Te1 Lc5 27.Kf1 Tf7 28.Te2
Tf5 29.Ke1 Lxf2+ 30.Txf2 Kd7
31.Td2+ Ke7 32.Ke2 b5 33.Ke3 c5
34.a3 Td5 35.Tf2 a6 36.Tf4 Td1
37.Tf2 Td5 38.Tf4 Td3+ 39.Ke2 Tg3
40.Kf1 Td3 41.Ke2 e5 42.Tf3 Td8
43.Tg3 Td6 44.Tg4 Kf6 45.h4 Td3
46.g3 a5 47.Ke1 Kf5 48.Tg5+ Kf6
49.Tg4 Kf5 50.Tg5+ Kf6 51.Tg4 a4
52.Ke2 Td6 53.Ke3 Td1 54.Ke4 Td2
55.Tg5 Txb2 56.Kd5 b4 57.Tg4
bxa3 58.Txc4 Tb3 59.Txa4 Txc3
60.g4 Td3+ 61.Kxc5 Td7 62.Ta6+
Kg7 63.g5 Td3 64.Ta7+ Kf8 65.Ta6

Kf7 66.Tf6+ Kg7 67.Ta6 e4 68.Kc4
Kf7 69.Tf6+ Kg7 70.Ta6 Th3
71.Kd5 e3 72.Ta7+ Kg8 73.Ta8+
Kf7 74.Kd6 1/2-1/2 Cohn,W -
Schlechter,C Berlin 1897