

B32
 □ **Hafner,Norbert** **1895**
 ■ **Höbarth,Günter** **1914**
 VM Linz, Hotel Schw.Bär (3.1)18.07.2017
 [Fritz 11 SE (360m)]

B32: Sizilianisch (Löwenthal-Variante)

1.e4 c5 2.Sf3 Sc6 3.d4 cxd4
4.Sxd4 e5 5.Sb5 d6 6.c4 Sf6
7.S1c3

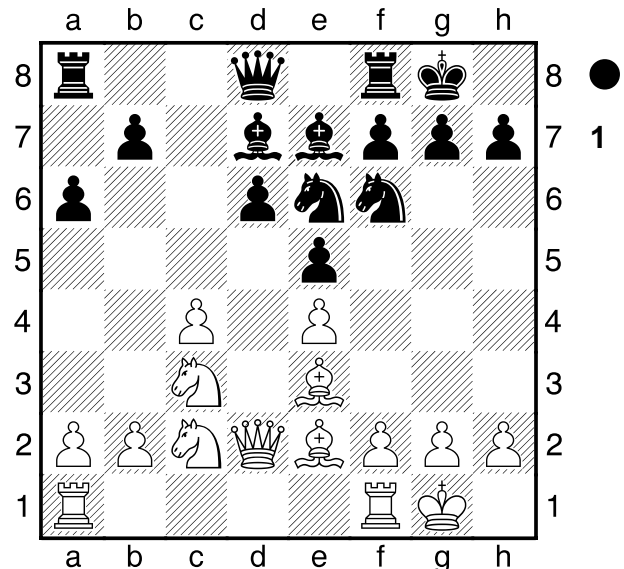
[7.Ld3 Le6 8.S1c3 a6 9.Sa3 Sd4
 10.0-0 g6 11.Sc2 Sxc2 12.Dxc2
 Lg7 13.b3 0-0 14.La3 Tc8 15.Tfd1
 Dc7 16.Dd2 Tfd8 17.Lb4 Sd7
 18.Le2 Sc5 19.Tac1 h5 20.De1
 Lh6 21.Tc2 Db8 **Almasi,Z (2676)-**
Horvath,A (2503)/Heviz 2003/CBM
096/1-0 (57)]

7...a6 8.Sa3 Weiß hat eine aktive
Stellung Sd4N

[8...Le6 9.Sc2 (9.Le2 Sd4 10.Sc2
 Sxe2 11.Dxe2 Tc8 12.Se3 Dc7
 13.Scd5 Dc5 14.f3 Sxd5 15.cxd5
 Ld7 16.a4 Lxa4 17.Ld2 Lb5
 18.Dd1 Dd4 19.Tc1 Tc5 20.b4
 Txc1 21.Dxc1 Kd7 22.Dc3 Dxc3
 23.Lxc3 Le7 **Kapnisis,S-Bunzmann,**
D/Herculane 1994/TD/0-1 (52))
 9...Le7 (9...Tc8 10.Se3 Le7 11.Ld3
 0-0 12.0-0 Sd7 13.Scd5 Lg5 14.b3
 Sc5 15.Sf5 Lxc1 16.Txc1 g6
 17.Sfe3 Lxd5 18.Sxd5 Se6 19.f4
 exf4 20.Sxf4 Sxf4 21.Txf4 Dg5
 22.Tf3 Tce8 23.Tg3 Dc5+ 24.Kh1
Lim Yee Weng-Bunzmann,D/Szeged
1994/TD/0-1 (80)) 10.Ld3 0-0 11.0-0
 Tc8 12.b3 Dd7 13.Lb2 Ld8 14.Sd5
 Lxd5 15.exd5 Se7 16.f4 e4 17.Le2
 Sf5 18.g4 Sh4 19.Kh1 h5 20.gxh5
 e3 21.Sxe3 Dh3 22.Dd4 Te8
 23.Lg4 **Corrales Jimenez,F (2499)-**
Kuzubov,Y (2568)/Hengelo 2007/
CBM 119 ext/1-0 (45)]
 [8...Le7 9.f3=]

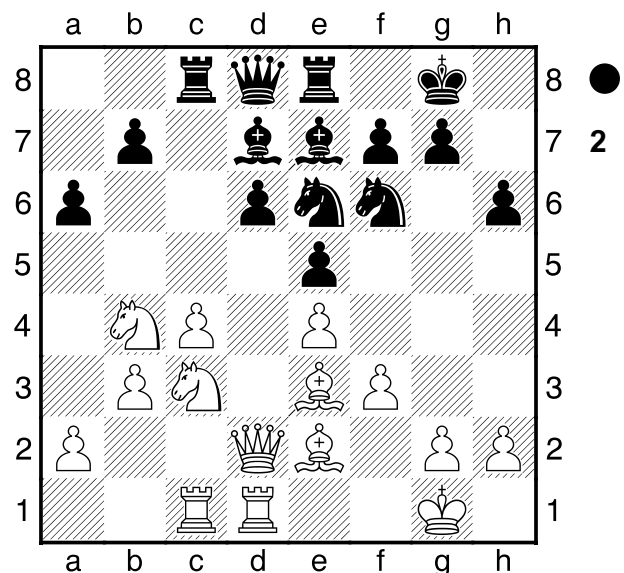
9.Le3± Weiß droht Materialgewinn:

Le3xd4 Se6 10.Dd2 Le7 Schwarz hat
eine gedrückte Stellung 11.Le2 0-0
Schwarz rochiert und verbessert damit
die Königssicherheit 12.Sc2 Ld7
13.0-0 Diagramm



Kh8 Schwarz hat eine gedrückte
Stellung

[△13...Tc8 14.Tfd1 h6 15.Tac1 Lc6
 16.f3 Ld7 17.Sb4 Te8 18.b3
Diagramm

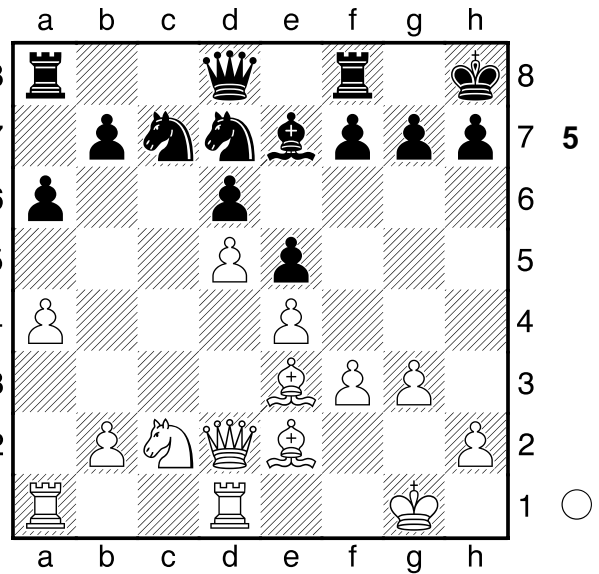
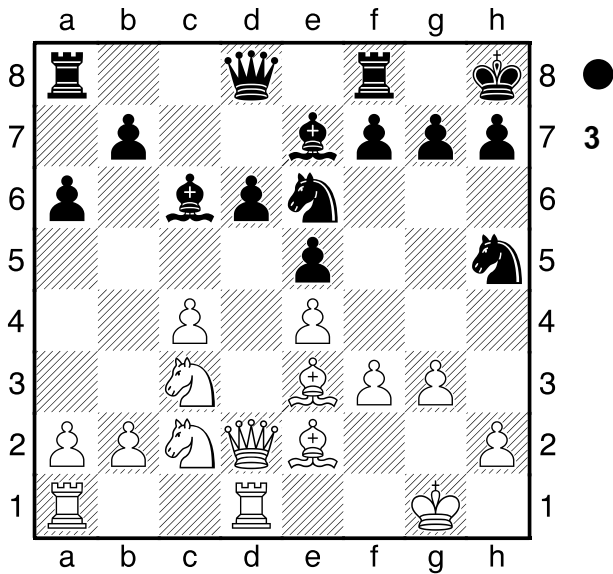


Kh7 19.Tc2]

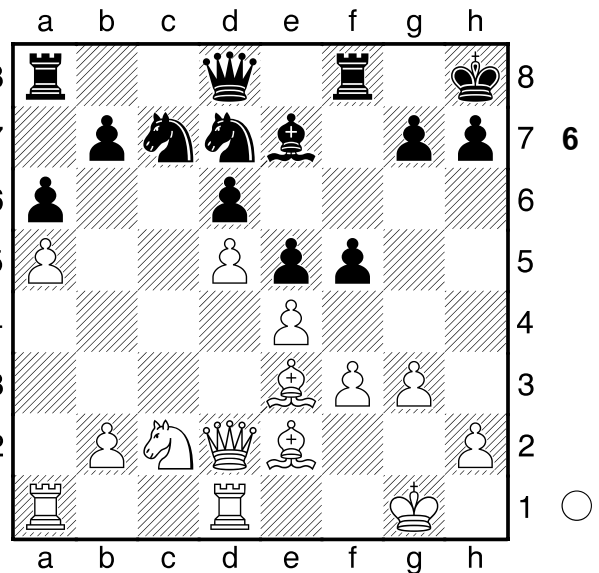
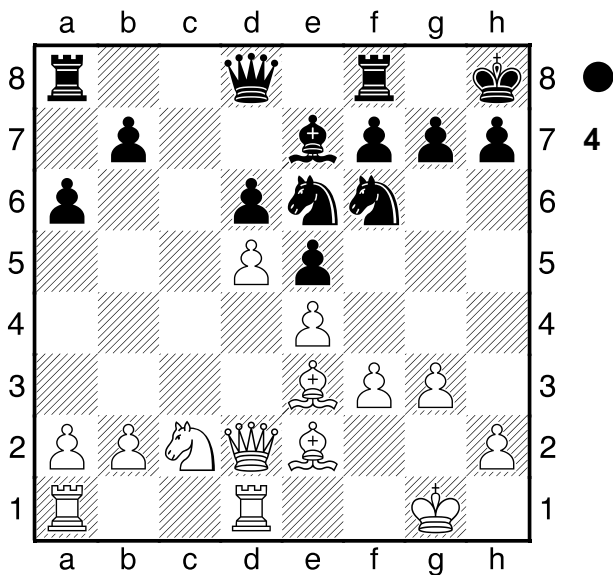
14.Tfd1 Lc6

[14...h6 15.Sb4±]

15.f3± Sh5 16.g3 Diagramm
Sf6?



[16...g6!?±]
17.Sd5+- Lxd5 18.cxd5 Diagramm



Sc7 19.a4
 [19.Tac1 Sd7+-]
19...Sd7 Diagramm

(Diagramm 5)

20.a5?±
 [20.Sa3 f5 21.exf5 Txf5+-]
 [od.auch 20.Tac1 f5 21.exf5
 Txf5+-]

20...f5 Diagramm

21.Ta3?±
 [21.exf5 Txf5 22.Db4 Tf8±]

21...f4?±
 [21...fxe4!? 22.fxe4 Sb5±]
22.gxf4± Diagramm

(Diagramm 7)

exf4??+- scheint log. & gut, ist aber 1 VerlustZug.

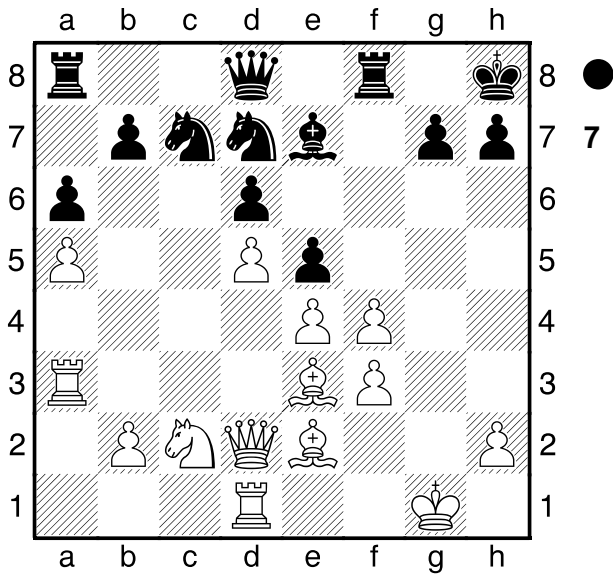
[22...Sb5!? 23.Lxb5 axb5±]

23.Lxf4+- Tf6

[◻23...Sb5 24.Lxb5 axb5
 25.Sd4+-]

24.Sd4 Se5 25.Kh1 Tg6 Diagramm

[25...Sb5 26.Se6 Txe6 27.dxe6
 Sxa3 28.bxa3+-]



26.Tg1

[26.Db4!? damit würde Weiß es sich noch erleichtern Lf8+-]

26...Txxg1+ 27.Kxxg1 g5

[27...Sb5 28.Sxb5 axb5 29.Lxb5+-]

28.Lg3 Lf6

[28...Sb5 29.Se6 Dd7 30.Tb3+-]

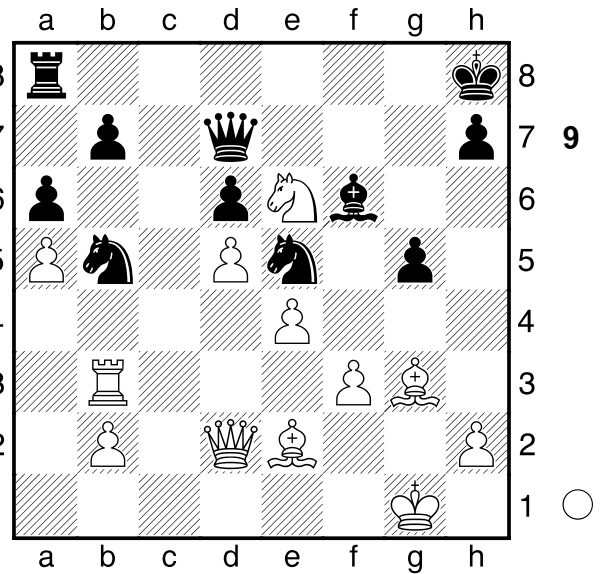
29.Tb3 Sb5 30.Se6 Dd7 Diagramm

(Diagramm 9)

31.f4

[31.Sxg5?! Sd4 32.Tc3 Sxe2+ 33.Dxe2 Lxg5+-]

31...gxf4 32.Dxf4 Lg7 Diagramm



33.Lh4?? danach kann Weiß alle Träume begraben

[Δ33.Df1 sichert den Gewinn Tc8

34.Lxb5 axb5 35.Dxb5+-]

33...Sg6± Diagramm

(Diagramm 11)

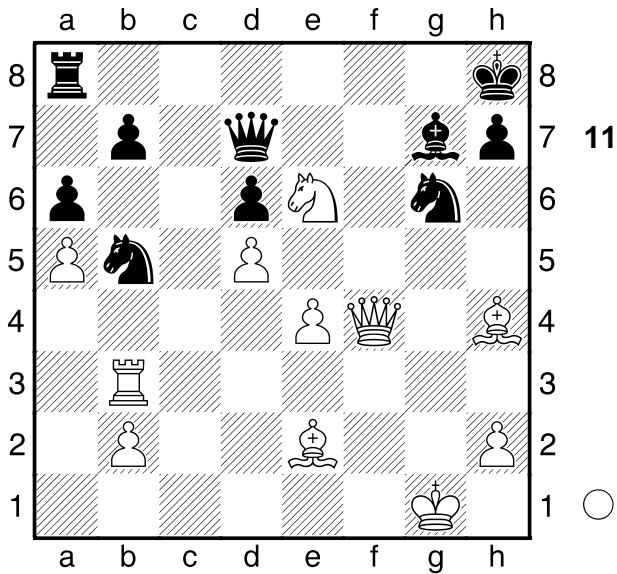
34.Dg5

[34.Lxb5 axb5 35.Df2 Sxh4 36.Dxh4 Tg8±]

34...Sd4= Schwarz droht

Materialgewinn: Sd4xb3 35.Te3

[35.Sxd4 Sxh4 36.e5 Lxe5



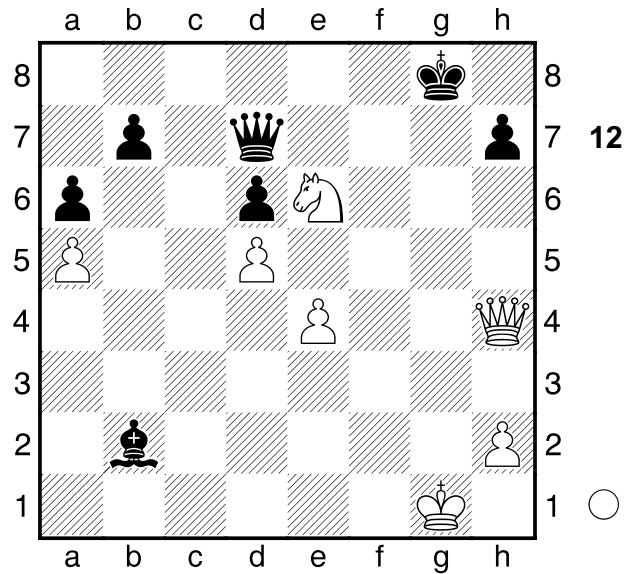
37.Dxh4 Dg7+ 38.Kh1 Lxd4
 39.Tg3=]
35...Sxe2+
 [\triangle 35...Sxe6 sieht noch spielbar aus
 36.dxe6 Dxe6 \bar{f}]
36.Txe2 \pm Tg8
 [36...Sxh4 37.Dxh4 Tg8 \pm]
37.Tg2
 [37.Lg3!? Le5 38.Kf1 Sf4+-]
37...Sxh4
 [37...Da4!? ist interessant 38.Sxg7
 Dd4+ 39.Kf1 Tf8+ 40.Sf5 Dxe4=]
38.Dxh4 \pm Lxb2 39.Txg8+ Kxg8
 Diagramm

(Diagramm 12)

40.Dd8+?? danach wendet sich das
 Blatt
 [\triangle 40.Dg5+ Kh8 41.Dd8+ Dxd8
 42.Sxd8 \pm]
40...Dxd8 \bar{f} 41.Sxd8 Diagramm

(Diagramm 13)

Ld4+
 [\triangle 41...Kf8-+]
42.Kf1 b5 43.Ke2 Verliert Material
Lc3 Schwarz droht Materialgewinn:
 Lc3xa5 **44.Sc6 Kf7 45.Kd3 Le1**



46.Sb8 Weiß droht Materialgewinn:
 Sb8xa6 Lxa5 **47.Sxa6 Kf6 48.Sb8**
Le1 49.Sc6 h5 50.Sd4 b4 51.Kc4
Lc3 52.Sf3 Kg6 53.h4
 1/2-1/2

