

B29
 □ Grund,Erwin 1645
 ■ Imhof,Gernot 1934
 VM2017 Linz,Hotel Schw.Bär 25.08.2017
 [Fritz 11 SE (360m)]

A04: Holländisches System ohne Übergang in andere Systeme
1.e4 c5 2.Sc3 Sc6 3.g3 g6 4.Lg2 Lg7 5.d3 d6 6.Sf3 e6 7.0-0 Sge7 8.Te1 0-0 9.Ld2

[9.Le3 e5 10.Sh4 h6 11.f4 exf4 12.gxf4 Sd4 13.h3 Le6 14.Sf3 Dd7 15.Kh2 Sec6 16.Tg1 Kh7 17.Lf2 Tae8 18.Sxd4 Sxd4 19.Lh1 Lxh3 20.f5 gxf5 21.Kxh3 fxe4+ 22.Dg4 f5 23.Lxe4 Kh8 Navin,K (2112)-Swathi,G (2280)/Mumbai 2003/CBM 093 ext/1/2-1/2]

9...Tb8N
 [9...h6 10.Dc1 Kh7 11.h4 e5 12.Tf1 Le6 13.Se2 Dd7 14.Kh2 f5 15.Seg1 Sd4 16.Se1 Sg8 17.c3 Sc6 18.Sh3 Sf6 19.f3 De7 20.Th1 Sh5 21.Sc2 f4 22.Le1 fxg3+ 23.Lxg3 Lxh3 24.Kxh3 Occhipinti,M (2020)-Mazzetta,R (1864)/Arvier 2007/CBM 118 ext/1/2-1/2 (50)]

10.Tb1 b5 11.a3 Kontrolliert b4 a5 12.Sa2

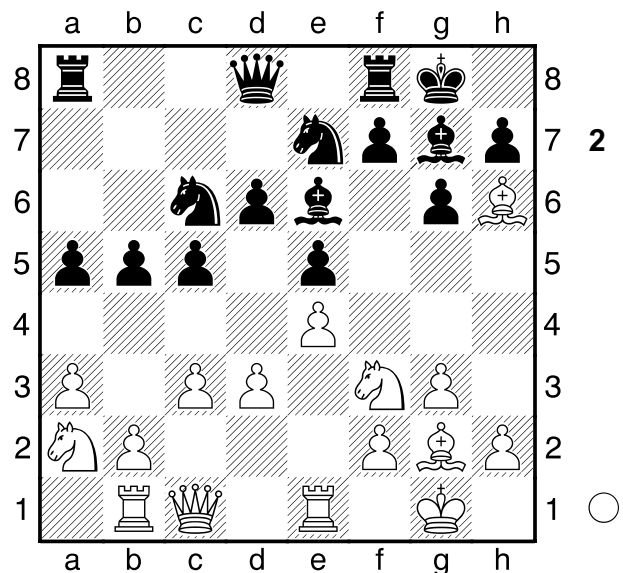
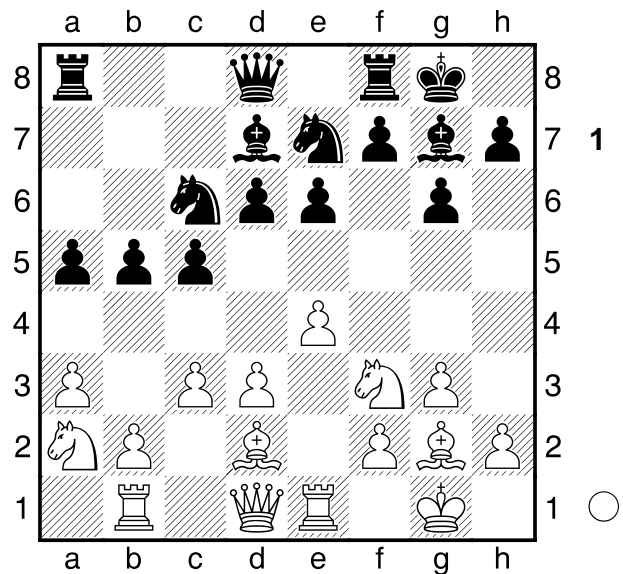
[12.a4 bxa4 13.Sxa4 Sd4=]

12...Ld7 13.c3 Der Gegner darf nicht nach b4+d4 **Ta8** Diagramm [13...Dc7 14.Sc1]

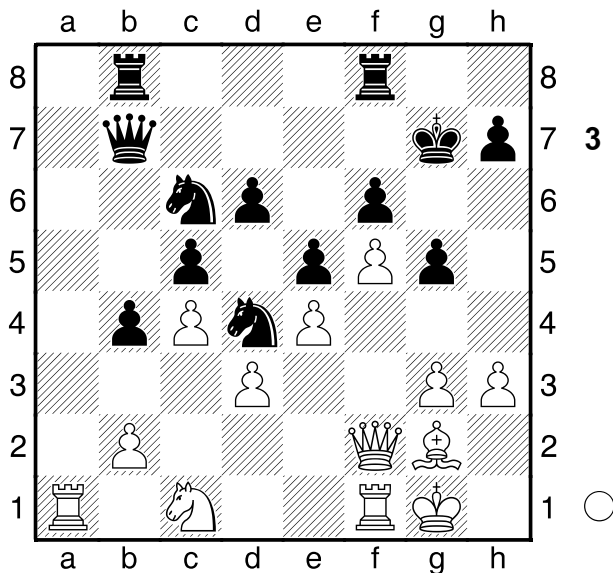
(Diagramm 1)

14.Dc1
 [14.Lg5 Dc7=]
14...e5 15.Lh6 Le6 Diagramm
16.c4 [16.Ta1 Db6]

16...b4 17.Lxg7 Kxg7 Die schwarze Königssicherheit hat sich verschlechtert



18.Sg5?
 [18.Dd2 Lg4]
18...Dd7?! 19.Dd2 Sd4 20.Sc1 Sec6 21.f4??-+
 [21.Se2 Lg4 22.f3 h6 23.Sxd4 Sxd4 (23...cxd4?! 24.fxg4 hxg5 25.Dxg5=) 24.fxg4 Dxg4 25.Sxf7 Txf7 (25...Kxf7?! 26.Dxh6 Th8 27.De3)]
21...f6?!
 [21...exf4!? 22.Dxf4 Se5 23.Tf1-+]
22.Sxe6+ Dxe6 23.Tf1?!
 [23.Se2 Sxe2+ 24.Txe2 exf4 25.gxf4 Sd4]
23...Dg4 24.Df2

[24.f5 a4 $\bar{7}$]**24...Tab8**[24...exf4 25.Dxf4 Dxf4 26.gxf4
bxa3 27.bxa3-+]**25.h3 Dd7 26.axb4 axb4 27.Ta1
Db7?! $\bar{7}$** [27...exf4 28.gxf4 b3 29.Se2 $\bar{7}$]**28.f5 $\bar{7}$ Raumvorteil g5 Diagramm****29.g4?! $\bar{7}$ Ta8 30.Txa8 Dxa8 31.h4
h6 32.hxg5**[32.Dd2! $\bar{7}$]**32...hxg5+ 33.Se2**

[33.Dd2 Th8-+]

33...Da4! 34.Sg3

[34.Kh2!? Th8+ 35.Kg3 Sc2-+]

**34...Ta8 35.Sh5+ Kf7 36.Dd2 Db3
37.Kf2**

[37.Sg3-+]

**37...Ta2 38.Tb1 Dc3!! Ablenkung: b2
39.bxc3??**[39.Ke1 ist ein letzter Versuch Sc2+
40.Kd1 Dxd2+ 41.Kxd2-+]**39...Txd2+ 40.Kf1**

[40.Ke3 Te2#]

40...bxc3 41.Tb7+ Se7[41...Se7 42.Tb1 c2 43.Te1 Td1
44.Kf2 c1D 45.Tf1 Dc2+ 46.Kg1
Txf1+ 47.Kxf1 De2+ 48.Kg1 Dxg4
49.Sf4 Dg3 50.Kf1 Dxf4+ 51.Ke1
Kg7 52.Lh1 Dh4+ 53.Kf1 Dvh1+]54.Kf2 Df3+ 55.Kg1 Se2+ 56.Kh2
g4 57.d4 Dh3#]**0-1**