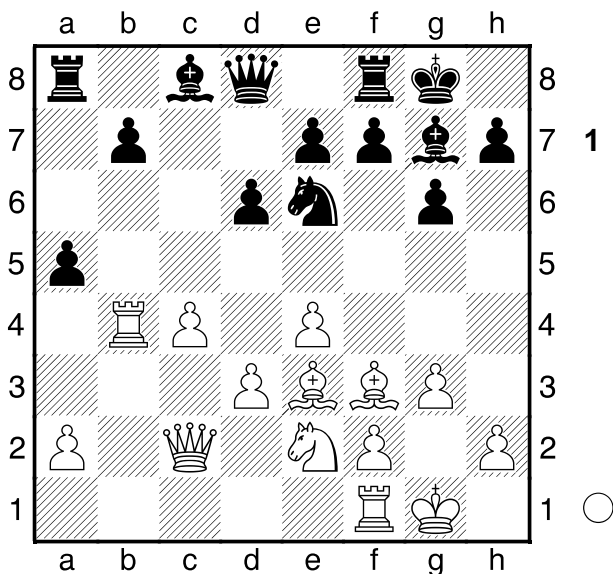


Grund,Erwin A10  
 Gangl,Andreas 1515  
 KLN;URF2-WLS3 (9.3) 1699  
02.03.2019

1.c4 g6 2.Sc3 Sf6 3.g3 Lg7 4.Lg2  
 c6 5.Dc2 d6 6.Sf3 Sbd7 7.Tb1 0-0  
 8.0-0 Sc5 9.d3 Se6 10.e4 Sd7  
 11.Se2 c5 12.b4 cxb4 13.Txb4 Se5  
 14.Le3 Sxf3+ 15.Lxf3 a5?±

Diagramm

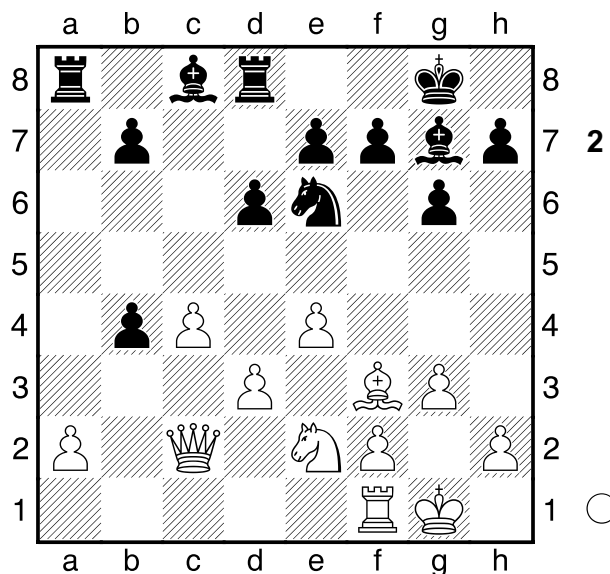


16.Lb6 GeistesBlitz?Nein,pure Gier!  
 [ △16.Tb5 ]  
 16...axb4 17.Lxd8 Txd8 Diagramm

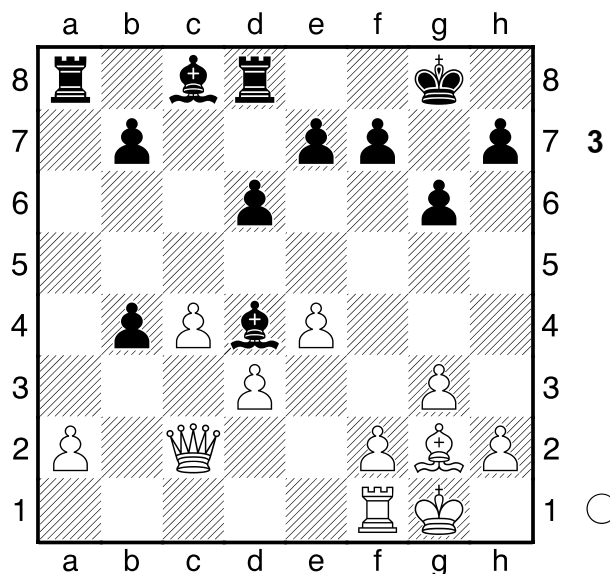
(Diagramm 2)

18.Lg2? W glaubt,die Partie nun leicht gewinnen zu können.....

[ 18.Tb1! Ta3 19.Tb3 Ta7 20.Txb4 Ld7 21.Lg4 Tda8 22.Dd2 Txa2 23.De3± (1,01;6h) ]  
[ 18.Kg2 Sd4 19.Sxd4 Lxd4 20.Tb1 Lc3 21.Ld1 e5 22.h4 h5 23.f4 Ta6± (0,85;6h) ]  
[ ≤18.Lg4 Ta3 19.Tc1 Sd4 20.Sxd4 Lxd4 ( 20...Lxg4?!+- 21.Sb5 Ta5 22.Sc7 Tc5 23.Sd5 e6 24.Se3 Lf3 25.Da4 Tdc8 26.Dxb4 b5 27.Tf1 Le2 28.cxb5 Lxf1 29.Kxf1 Lc3



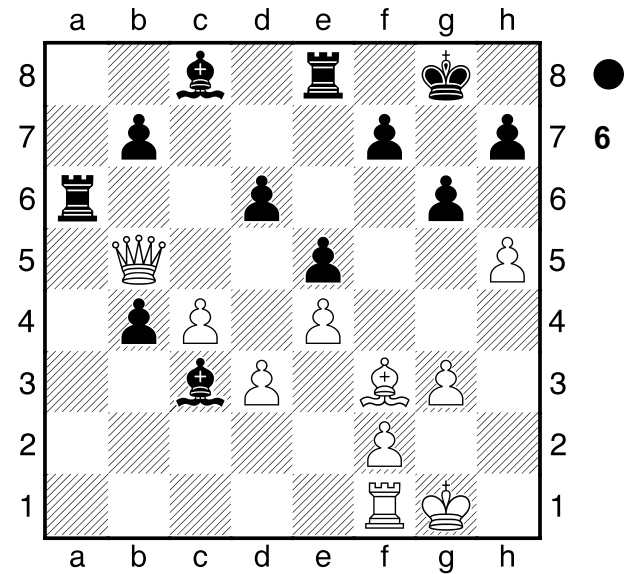
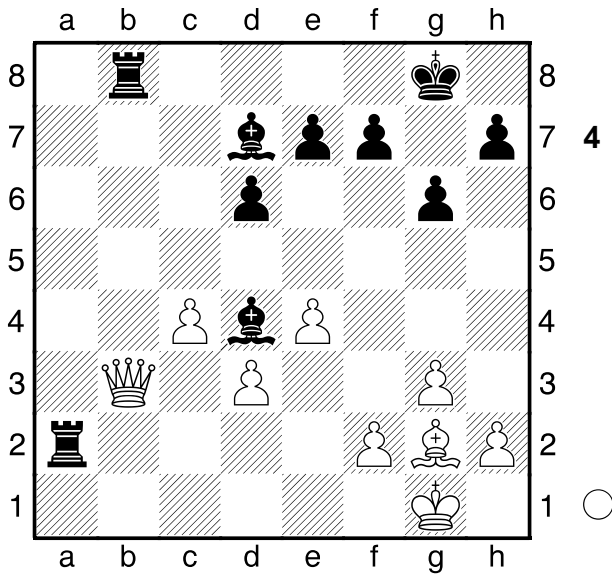
30.Db3 Ld4 31.Ke2 Tb8 32.a4+- (3,12;45') ) 21.Lxc8 Txc8 22.Dd2 Tca8± (0,76;6h) ( 22...Tc6 23.Kg2 Tb6 24.Tc2± (0,68;1h) ]  
 18...Sd4 19.Sxd4 Lxd4 Diagramm



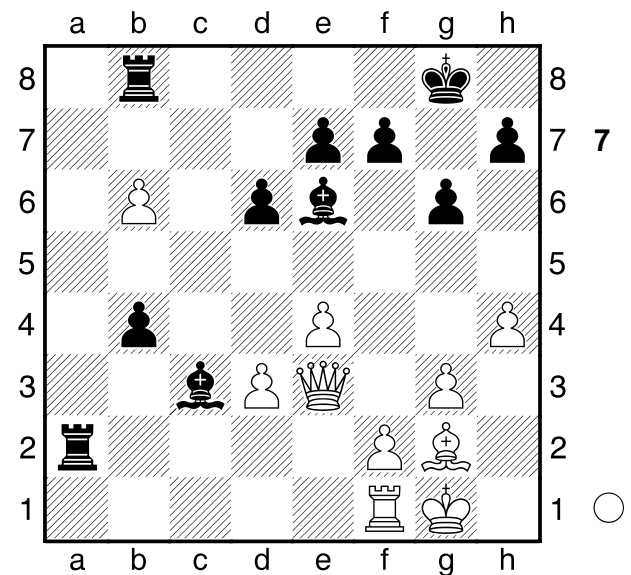
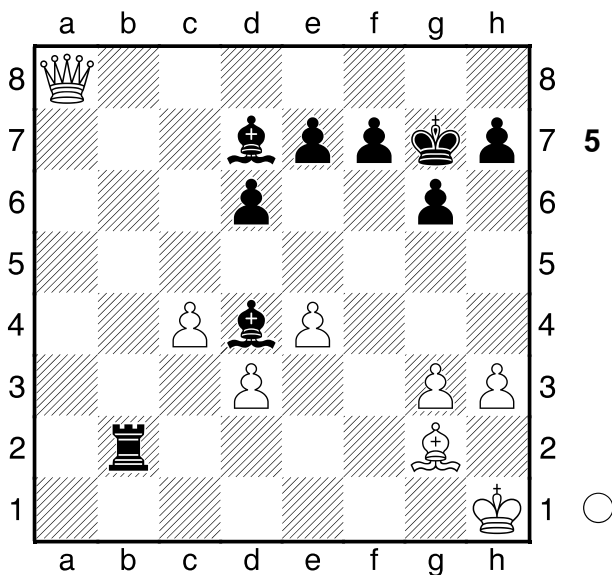
20.Kh1?=  
[ △20.Tb1 Ta7 21.Txb4 Ld7 22.Db3 Tda8 23.Txb7 Txa2 24.Tb8+ Txb8 Diagramm

(Diagramm 4)

25.Dxa2 ( 25.Dxb8+ Kg7 26.Dd8?? Ta1+ 27.Lf1 Lh3 (-#2) ) 25...Tb2 26.Da8+ Kg7 27.h3 Txf2 28.Kh1



Tb2= Diagramm

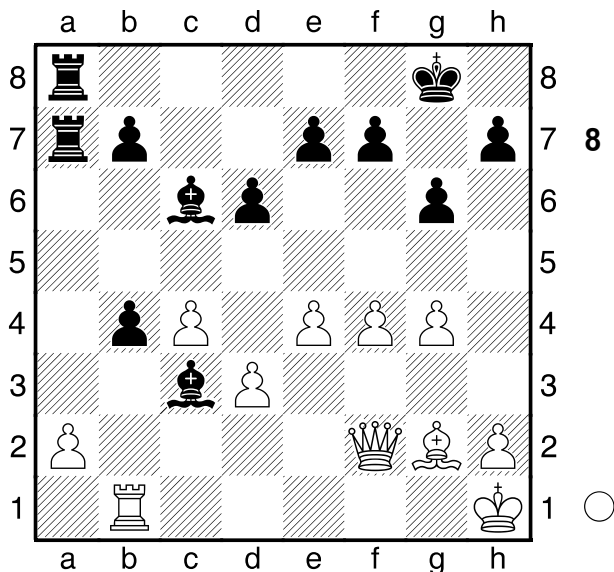


] [ 20.h4 Ta3 21.Dd2 Lc3  
**A) 22.De3 Txa2**  
**A1) 23.h5 Te8** ( 23...Lg4 24.Lf3  
 Lxf3 25.Dxf3= );  
**A2) 23.Db6 Te8 24.Lf3 e5**  
 25.h5 Ta6 26.Db5= Diagramm

(Diagramm 6)

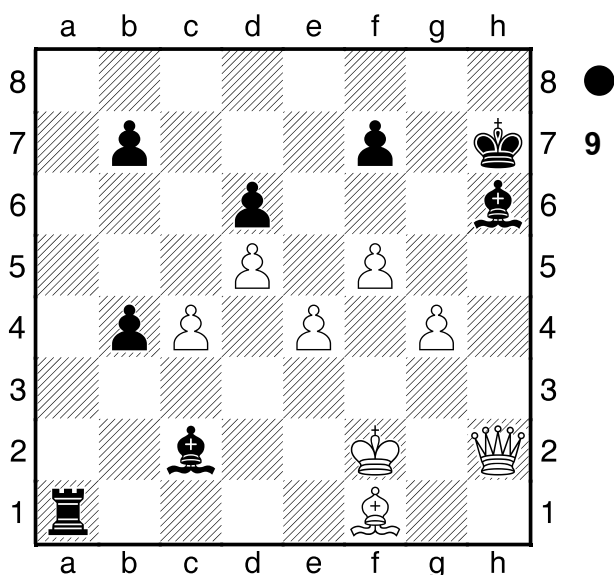
;  
**B) 22.De2 b5 23.cxb5 Le6**  
 24.De3 Tb8 25.b6 Txa2=  
 Diagramm

] [ 20.Dd2 Lc3 21.De2 Ta7 22.Tc1  
 Ld7 23.Tc2 Tda8 24.h4 La4 25.Tc1  
 Ld7 26.Tc2= ]  
**20...Ld7 21.f4??**  
 [  $\triangle$ 21.e5 Lc8 22.exd6 Txd6= ]  
**21...Lc6 22.Tb1**  
 [  $\triangle$ 22.e5 dxe5 23.Lxc6 bxc6  
 24.fxe5 Lxe5= ]  
**22...Lc3 23.g4???**  
 [ 23.e5! ]  
**23...Ta7 24.Df2??-+**  
 [  $\triangle$ 24.e5 ]  
**24...Tda8 Diagramm**  
**25.f5??-+ g5?!? 26.h4?-+**



[ 26.d4!?≠ nützt schlussendl. auch nichts! Txa2 27.De3 h6 28.d5 La4

- A) 29.h4 Lc2 30.Tf1 gxh4
- A1) 31.Dxh6 Ta1 32.Dg5+
- A1a) ≤32...Lg7 33.Dxe7 Txf1+ 34.Lxf1
- A1a1) 34...Ta1 35.Kg2 h3+ 36.Kf2 h2 37.Dd8+ Kh7 38.Dh4+ Kg8 ( 38...Lh6?? 39.Dxh2+- Diagramm



- ) 39.Dd8+ Kh7 40.Dh4+= ;
- A1a2) 34...b6 35.e5 Lxe5 36.Dg5+ Kf8 ( 36...Lg7?? 37.f6+- ) 37.Kg2 Le4+ 38.Kh3= ;

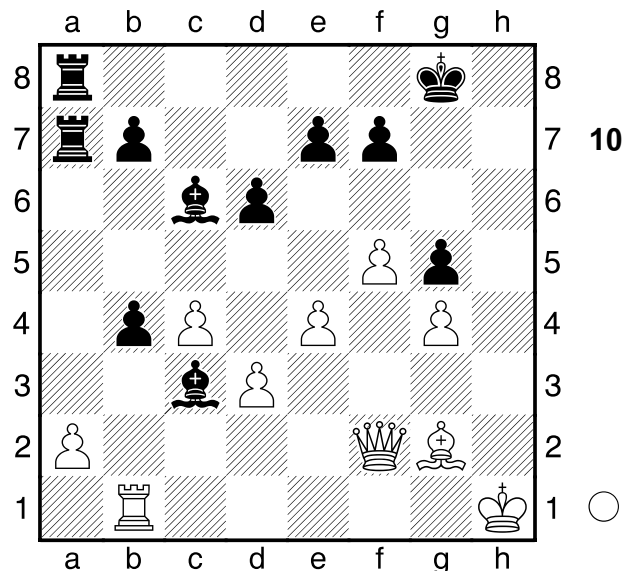
A1b) 32...Kf8 ;

A2) 31.g5 ;

B) 29.c5 Lb5 30.cxd6 Ta1-+ ]

[od. 26.De3 m.ZugUmstellg.]

26...h6 27.hxg5 hxg5 Diagramm



28.f6??-+

[ 28.Tb2 noch am besten. Lxb2 29.Dxb2 Txa2 30.Dxb4 T8a3 31.Db6 f6 32.c5 dxc5 33.Dxc5 Kf8-+ (-1,88;1h) ]

28...exf6??=

[ 28...Txa2! 29.Db6

A) 29...exf6

A1) 30.Txb4?? Ta1+ 31.Tb1 ( 31.Kh2?? Le5+ 32.Kh3 Kg7 33.Lf1 T8a2 34.Tb2 Txb2-+ );

A2) 30.Lf1 ;

B) 29...Lxf6-+ ]

29.d4 Diagramm

(Diagramm 11)

Kg7??+-

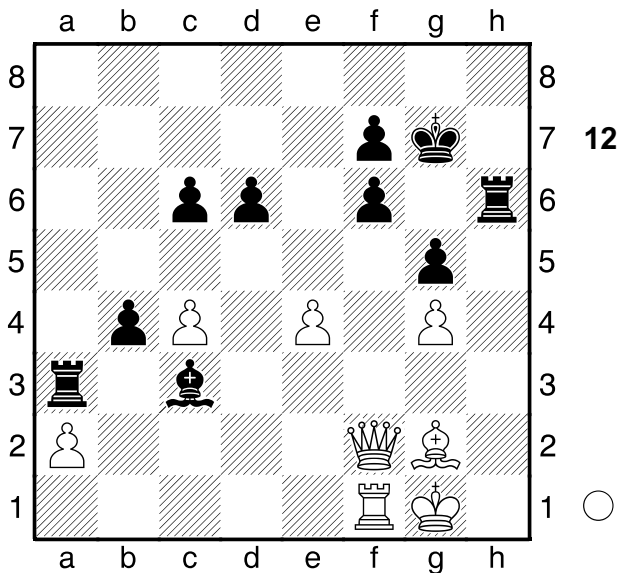
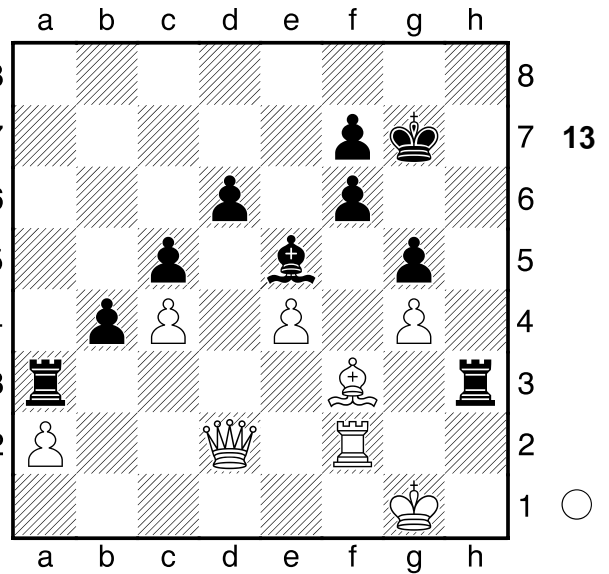
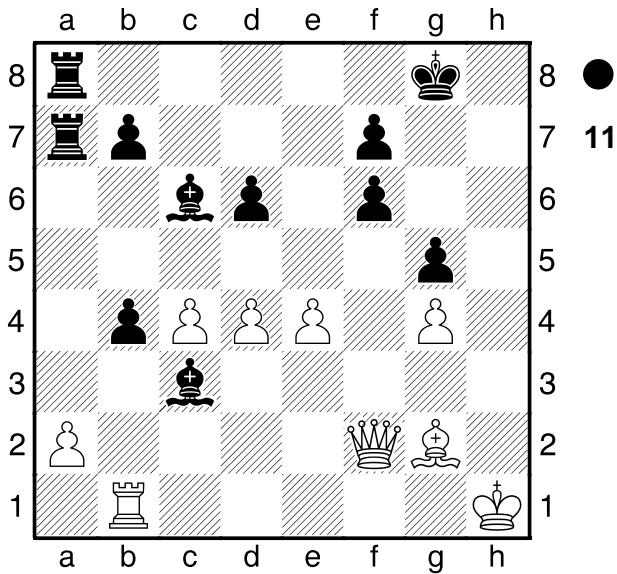
[ 29...Txa2 30.Dxf6 Ta1 31.Dxg5+ Kf8 32.Txa1 Txa1+ 33.Kh2= ]

30.Tf1 Th8+ 31.Kg1 Th6 32.d5 Ta3 33.dxc6 bxc6 Diagramm

34.Lf3?!±

[ ⊖34.c5!! Le5 35.Td1

A) 35...dxc5? 36.Dxc5 Lf4



38.Kf1 Tgxf3 39.Txf3 Txf3+ 40.Ke2 Th3 41.Dd5 Th2+ 42.Kf3 [ ⚠42.Kd1 aber Conchita ] 42...Txa2 43.Db7 Ta3+ 44.Ke2 Tc3 45.Ke1 Txc4 46.Kd2 Tc3 47.Kd1 Tg3 48.Kc2 Txc4 49.Dd5 Tg3 50.Kc1 b3 51.Kd2 b2 52.Db7 Tg1 0-1

( 36...Txa2? 37.Dc4 ) 37.Dxb4 ;  
**B)** 35...Lf4+- ]  
 [ 34.Td1! Th4 35.De2 Le5  
 36.Td3+- ]  
 34...Le5 35.Dd2??= c5 36.Tf2 Th3  
 Diagramm

(Diagramm 13)

37.Kg2??-+ Dam. ist die Partie verloren!  
 [ 37.De2= ]  
 37...Tg3+  
 [ 37...Thxf3?? 38.Txf3+- ]  
 [ 37...Taxf3!? 38.Txf3 Th2++ ]