

**C52**

**Evan's-Gb.**

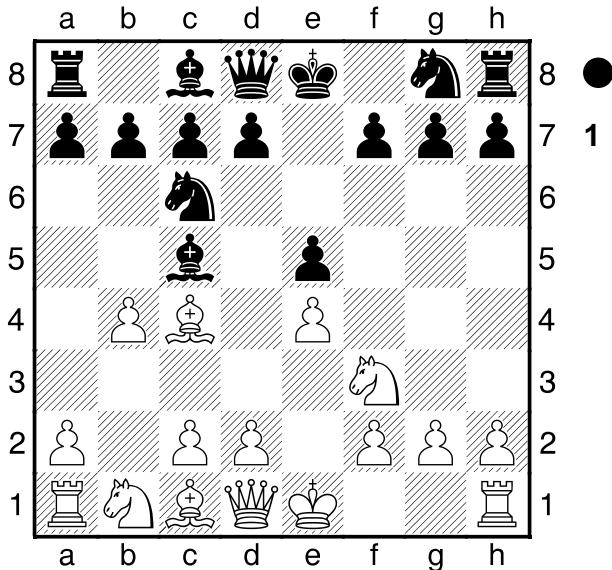
PartienBeispiele

1963

[F11;ewg;etc.]

1.e4 e5 2.Sf3 Sc6 3.Lc4 Lc5 4.b4

Diagramm



**Lxb4**

[ 4...Lb6 5.a4 a6 6.Sc3 d6 7.Sd5  
La7 8.d3 h6 9.c3 Sf6 10.h3 Sxd5  
11.Lxd5 Se7 12.Lb3 Sg6 13.De2  
Le6 14.Lc4 0-0 15.g4 d5 16.La2  
Dd7 17.g5 h5 18.Le3 Dxa4  
19.exd5 Lxd5 20.0-0 Dc6 21.Lxd5  
Dxd5 22.Se1 Lxe3 23.fxe3 e4  
24.Dg2 Tad8 25.Ta5 De6 26.d4  
Td5 27.Txd5 Dxd5 28.Kh1 Dc4  
29.Sc2 Sh4 30.Df2 Sf3 31.Td1  
Dxc3 32.d5 De5 33.h4 Td8 34.Tf1  
Dxd5 0-1 Ravot,S (2238)-Adams,N  
(2218)/Budapest 2007/CBM 119 ext ]

**5.c3 Diagramm**

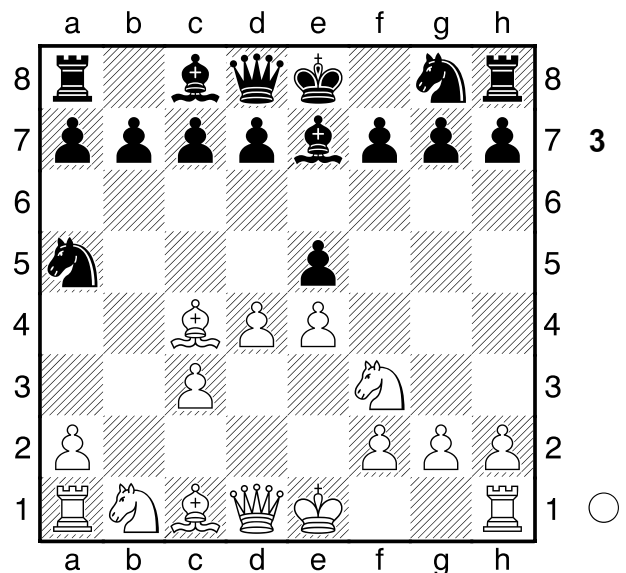
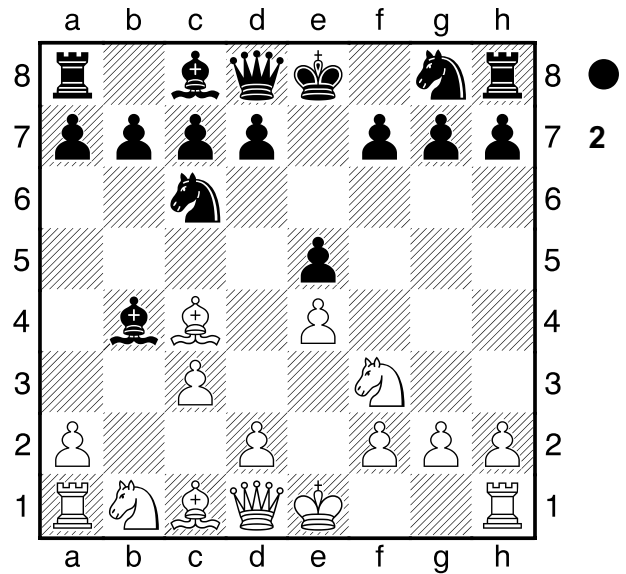
(Diagramm 2)

**La5**

[ 5...Le7 6.d4 Sa5 Diagramm

**A)** 7.Le2 exd4

**A1)** 8.cxd4 Sf6



**A1a)** 9.Ld2 c6 10.Sc3 0-0  
11.e5 (≤11.Ld3≠ d5 12.e5  
Sh5 13.h3 g6 14.0-0 Sc4  
15.Lh6 Te8 ) 11...Sd5= ;

**A1b)** 9.Sc3 d5 10.e5 Se4  
11.Dc2 f5 12.exf6 Sxf6 13.0-0  
0-0 14.Te1 Sc6 15.Db3  
Sa5= ;

**A2)** 8.Dc2 d5 9.e5 Sh6  
10.Lxh6 gxh6 11.cxd4 c6  
12.Sbd2 Le6 13.0-0 Dc7 14.Ld3  
0-0-0 15.Lxh7 Kb8= ;

**A3)** 8.0-0 Sf6 9.e5 Se4  
10.cxd4 d5 11.exd6 Sxd6  
12.Ld2 b6 13.Lxa5 bxa5

14.Da4+ Ld7 15.Dxa5 c6= ;  
**A4)** 8.Dxd4?! $\bar{f}$  d6 ( $\triangle$ 8...Sf6 )  
 9.Dxg7 Lf6 10.Dg3 Se7  
 11.0-0?! $\bar{f}$  ( $\triangle$ 11.Lg5 Sec6= )  
 11...Sg6?! $\pm$  12.Sd4 De7 13.Sd2  
 Ld7 14.S2b3 Sxb3  
 ( $\triangle$ 14...Sc6= ) 15.axb3 0-0  
 ( $\triangle$ 15...Tg8 ;od. 15...a6 ) 16.Lg4  
 Kh8? $\pm$  ( $\triangle$ 16...Lxg4 17.Dxg4  
 Tfe8 $\pm$  ) 17.Lxd7 Dxd7 18.Ta5  
 Tae8 ( 18...c5 ; 18...De7 )  
**A4a)** 19.Txa7! $\pm$  Lxd4 20.cxd4  
 Txe4 21.Df3 f5 ( 21...Txd4??+-  
 #3 22.Df6+ Kg8 23.Lh6 )  
 22.Dc3 $\pm$  ;  
**A4b)** 19.Th5?= Lxd4  
 ( 19...Txe4 20.Df3 De7 $\pm$  )  
 20.cxd4 Txe4 21.Lh6?! ( 21.f4!  
 Tg8 22.f5 Sf4 23.Txh7+ Kxh7  
 24.Dh4+ Kg7 25.Lxf4 f6  
 26.Lh6+ Kh7 27.Dxe4 Kxh6  
 28.Dxb7 $\pm$  (+1,4) ) 21...Tfe8  
 22.Df3 f6 23.Dxf6+ Kg8 24.d5  
 Df7 25.Dxf7+?!= ( $\triangle$ 25.Dc3 $\pm$  )  
 25...Kxf7 26.Tf5+ Kg8 27.f4  
 Te1 28.g3 Txf1+ 29.Kxf1 a5  
 30.Tg5 Kf7 31.f5 Se7  
 32.Tg7+ Kf6 33.g4 Sxd5  
 34.Txh7 b5?! $\pm$   
**A4b1)**  $\triangle$ 35.Lg7+ Kf7  
 36.Lc3+ Kf8 ( 36...Kg8  
 37.Th8+ Kf7 38.Txe8 Kxe8  
 39.Lxa5 Se3+ 40.Ke2 Sxg4  
 41.Lxc7 Kd7 42.La5 Sxh2  
 43.Le1 Sg4 44.Kf3 Se5+  
 45.Ke4 Sc6 46.Lh4 Sa5  
 47.b4 Sc6 48.Le1 $\pm$  ) 37.Th8+  
 Ke7 38.Txe8+ Kxe8 39.Lxa5  
 Se3+ $\pm$  ;  
**A4b2)** 35.Kf2 a4 36.bxa4  
 bxa4? 37.h4 Ke5 38.Kf3  
 Kd4??+- schaut logisch aus,  
 aber 39.f6!! Sxf6 40.Lg7 Tf8  
 41.g5 a3 42.Th8!!  
 1-0 Short,N (2691)-Sokolov,I

(2655)/Sarajevo 2007/CBM  
 118 ( 42.Th8!! Tf7 43.Lxf6+  
 Kd5 44.Kg4 Ke6 45.Te8+  
 Kd7 46.Ta8 Ke6 47.Txa3 );  
**B)** 7.Ld3 exd4 8.cxd4 d5 9.e5  
 Lb4+ 10.Sbd2 Se7 11.0-0 0-0  
 12.Dc2 h6 13.a3 Lxd2 14.Lxd2  
 Sac6 15.Le3 f6 16.Tac1 Lg4  
 17.exf6 Txf6 18.Se5 Lf5 19.Sxc6  
 bxc6 20.Tfe1 Dd6 21.Ld2 Dxa3  
 22.Txe7 Lxd3 23.Te3 Lxc2  
 24.Txa3 Lg6 25.Ta6 Le8 26.f3  
 Te6 27.Kf2 Tb8 28.Tc2 Tb6  
 29.Txa7 Lg6 30.Tca2 Lb1 31.La5  
 Lxa2 32.Lxb6 cxb6 33.Txa2 Kf7  
 34.Ta6 c5 35.Ta7+ Kf6 36.Td7  
 c4 37.Txd5 c3 38.Td8 Tc6 39.d5  
 c2 40.dxc6 c1D 41.Tc8 Dc2+  
 42.Kg3 Kf7 43.Kf4 Dc4+  
 0-1 Edwards,J (2170)-Poulopoulos,  
 I (2007)/Athens GRE 2012 ;  
**C)** 7.Sxe5 Sxc4 8.Sxc4 d5  
 9.exd5 Dxd5 10.Se3 Da5 11.0-0  
 Sf6 12.Te1 ( 12.c4 0-0 13.Lb2 c6  
 14.Sc3 Dg5 15.Df3 Ld6 16.c5  
 Lb8 17.d5 cxd5 18.Scxd5 Sxd5  
 19.Dxd5 Dxd5 20.Sxd5 Le6  
 1/2-1/2 Sveshnikov,E (2504)-  
 Romanov,E (2501)/Chelyabinsk  
 2007/CBM 117 ext ) 12...Le6 13.c4  
 0-0 14.d5 Ld7 15.Ld2 Da6  
 16.Sc3 Tfe8 17.Db3 Tad8  
 18.Tab1 Lc5 19.h3 Lc8 20.Sb5  
 Se4 21.Lb4 Dg6 22.Lxc5 Sxc5  
 23.Dd1 Sd3 24.Tf1 Sf4 25.Df3  
 Sxh3+ 26.Kh2 Sxf2 27.Txf2 Dxb1  
 28.Dxf7+ Kh8 29.Sxc7 Tg8  
 30.Se6 Lxe6 31.dxe6 Dg6  
 32.Dxg6 hxg6 33.e7 Tc8 34.Sd5  
 Tge8 35.Tf4 Kg8 36.Kg3 Tc5  
 37.a4 a6 38.Td4 Kf7 39.Tf4+  
 Ke6 40.Te4+ Kd6 41.Tg4 g5  
 42.Td4 Txe7 43.Sxe7+ Kxe7  
 44.Kg4 Ta5 45.c5 Txc5 46.Tb4  
 b5 47.axb5 axb5 48.Tb2 Kd6

49.Kh5 Td5 50.Kg6 Kc5 51.Tc2+  
Kd4 52.Tc7 b4 53.Tb7 Kc4  
54.Txg7 b3 55.Tc7+ Tc5 56.Tb7  
Tb5 57.Tc7+ Kd3 58.Td7+ Ke2  
59.Th7 b2 60.Th1 b1D+

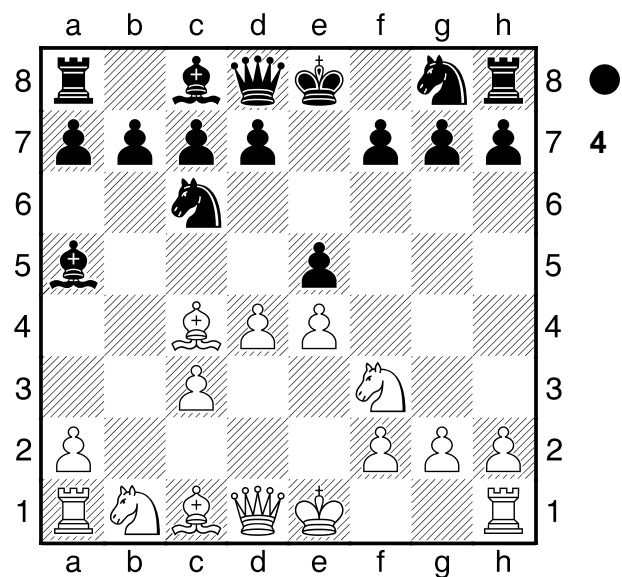
0-1 Sumar,J-Westerinen,H (2450)/  
Tel Aviv 1964/MCD ]

[ 5...Lc5 6.d4 exd4 7.cxd4 Lb6  
8.Sc3 d6 9.0-0 Sa5 10.Lg5 f6  
11.Lf4 Sxc4 12.Da4+ Kf8 13.Dxc4  
Lg4 14.Sd2 Se7 15.a4 a5 16.Tab1  
Lh5 17.Tfe1 Lf7 18.d5 Sg6 19.Le3  
Se5 20.De2 g5 21.Sf1 h5 22.Lxb6  
cxb6 23.Se3 Tc8 24.Sb5 Lg6  
25.Sd4 Kg8 26.f3 Th7 27.Se6 Dd7  
28.Txb6 Dxa4 29.Teb1 Td7 30.Db5  
Da3 31.Sf1 Tc2 32.Db3 Dxb3  
33.T6xb3 Ta2 34.Txb7 Txb7  
35.Txb7 g4 36.Tb3 h4 37.fxg4  
Lxe4 38.Se3 Sd3 39.Kf1 Ta1+

0-1 Luna Osorio,D-Eliskases,E/  
Buenos Aires 1970/MCD ]

[ 5...Ld6 6.0-0 Sf6 7.d4 0-0 8.Te1  
Tb8 9.a4 b6 10.Lb5 De8 11.Lg5  
Kh8 12.Sbd2 Sg8 13.Sc4 Le7  
14.Lxe7 Dxe7 15.Scxe5 Sxe5  
16.Sxe5 f6 17.Sf3 a5 18.e5 Lb7  
19.d5 c6 20.d6 De6 21.Ld3 c5  
22.Le4 Lxe4 23.Txe4 Df5 24.De2  
fxe5 25.Txe5 Dg6 26.Td1 Tf6  
27.Tg5 Te8 28.Dd2 Dh6 29.Se5  
Dh4 30.Sxd7 Txd6 31.Dxd6 Dxc5  
32.Sxb6 Sf6 33.h3 h6 34.Sc4 Df5  
35.Se3 Dg5 36.c4 Dh4 37.Dxc5  
Dxf2+ 38.Kxf2 Se4+ 39.Kf3 Sxc5  
40.Td5 Tc8 41.Ke2 Sxa4 42.Txa5  
Sb2 43.c5 Te8 44.Ta3 Sc4 45.Tc3  
Sxe3 46.Txe3 Tc8 47.Te5 Kg8  
48.Kd3 Kf7 49.Kc4 Kf6 50.Te2 Tb8  
51.c6 Tb1 52.Kc5 Tc1+ 53.Kb6  
Tb1+ 54.Ka7 Ta1+ 55.Kb7 Tb1+  
56.Kc8 h5 57.c7 Tb4 58.Kd7 Td4+  
59.Kc6 Tc4+ 60.Kd6 1-0 Li Chao  
(2320)-Wang Rui (2482)/Kuala  
Lumpur 2007/CBM 120 ext ]

## 6.d4 Diagramm



## exd4

[ 6...d6 7.Db3

**A)** 7...Sxd4 8.Sxd4 exd4

**A1)** 9.Lxf7+?! Kf8 10.0-0 Df6  
11.Ld5 Lb6 ( 11...Se7 12.cxd4  
c6 13.Lc4 Dxd4= ; 11...dxc3  
12.Da3= );

**A2)** 9.0-0 Lb6 10.Lxf7+ Kf8  
11.Lb2 d3 ( 11...Sh6 12.Lc4= )  
12.Lxg8 Txg8 13.c4 Dg5  
14.Dxd3 Le6± ;

**B)** 7...Dd7

**B1)** 8.Sbd2 Lb6

**B1a)** 9.dxe5 Sa5 10.Dc2  
Sxc4 11.Sxc4

**B1a1)** 11...d5! {F11:±}

12.Sxb6 axb6 13.0-0 dxe4  
14.Dxe4 Dg4 Ein psycholog.

Zug.D-Tausch ergibt für S 1  
komfortables EndSpiel m.1  
leichten Vorteil.Daher war ich  
nicht ü-rascht,dass E. auf  
Angriff spielte. 15.De3 Se7  
16.Sd4 0-0 17.h3 Dg6  
18.f4?! Die einz.

AngriffsChance ist der  
Vormarsch der K-B-Mehrheit;  
das wird aber nicht gut  
ausgehen,weil ich f5 gut unter

Kontrolle habe. Mein Plan für die nächsten paar Züge ist, mit dem wS seine stärkste Figur abzutauschen & die d-Linie zu besetzen. c5!  
 19.Sb5 Td8 20.Sd6 Sf5  
 21.Sxc8 (Wenn 21.Sxf5!? Lxf5-+ kann W Td3 nicht mehr verhindern. ) 21...Taxc8 ( 21...Sxe3?? 22.Se7+- )  
 22.Df3 h5!  
 Für den verschmerzbaeren Verlust 1 B, verhindere ich g4, was die Entwicklung des sL erschwert. 23.Dxb7 ( 23.Td1? Sh4-+ ) 23...Tc6  
 24.Da6 c4 schränkt die Züge der wD ein & behält die Herrschaft über d3.  
 25.Da4??-+ (  $\triangle$ 25.a4 $\bar{f}$  das kleinere Übel. ) 25...Td3  
**B1a11)** 26.Kh2 Txb3+  
 27.Kg1-+ ( 27.gxh3?? Dg3+ 28.Kh1 -#6 );  
**B1a12)** 26.Tb1 Der h-B ist nicht mehr zu retten. Txb3  
 27.e6 Txe6 28.Dxc4  
**B1a121)** Auch 28...Dg4  
 29.Dc8+ Kh7-+ führt zum Sieg. ;  
**B1a122)** 28...Dg3  
 Das # ist nicht mehr zu verhindern. 29.Dd5 ( 29.Dc8+ Kh7 30.Dxe6 fxe6 31.Tb2 Dh2+ 32.Kf2 ; 29.Tb2 Dh2+ 30.Kf2 Tf3+ 31.Kxf3 Dg3# ) 29...Te2 -#3 ;  
**B1a123)** 28...Dg3  
 0-1 Estrin, Y-Palciauskas, V/10.FS-Wch 1978/ chessgames.com/ [Palciauskas;F11] ;  
**B1a2)** 11...Dc6 12.Sxb6 axb6 13.Sd4 Dc4 14.exd6

cxd6 15.a3 Se7 16.Tb1 0-0  
 17.Tb4 Dc7 18.Sb5 Dc6  
 19.0-0 d5 20.Lg5 f6 21.Lf4 dxe4 22.Ld6 Sd5 23.Td4  
 Dxb5 24.c4 Da4 25.Dxa4  
 Txa4 26.Lxf8 Kxf8 27.Txd5  
 Le6 28.Td8+ Kf7  
 ( 28...Ke7?! $\pm$  29.Tb8 Ta7  
 30.Te1 f5 31.g4 fxc4  
 32.Txe4 $\pm$  ) 29.Tb8 Lxc4  
 30.Txb7+ Kg6 31.Ta1 b5  
 32.h3 Ta6 33.Td1 Txa3  
 34.Tdd7 Ta1+ 35.Kh2 Ta2  
 36.Kg3 Kf5 37.Txg7 e3? $\pm$   
 (  $\triangle$ 37...Ta3+ 38.Kh4 Ta2  
 39.g4+ Kf4 40.Tb6 Kf3  
 41.Txf6+ Kg2 42.Te7 Ld3= )  
 38.fxe3 Ld5 39.e4+ Lxe4  
 40.Txb5+ Ke6+- 1-0 Antal, G  
 (2545)-Zawadski, J (2386)/Aix-les-Bains 2011/chessgames.com/[F11;ewg] ;  
**B1b)** 9.0-0 Sa5 10.Dc2 Se7  
 11.dxe5 0-0 12.La3 Sg6  
 13.exd6 cxd6 14.Sd4 Lc5  
 15.Lb4 Sxc4 16.Sxc4 Lxb4  
 17.cxb4 d5 18.exd5 Dxd5  
 19.Tfd1 Lg4 20.f3 Tac8  
 21.Tac1 Le6 22.Sxe6 Dxe6  
 23.De4 Da6 24.a3 h6  
 ( 24...b5 25.Sa5 Db6+  
 26.Kf1= ) 25.Sa5 b6 26.Sc4  
 Tc7 27.Tc2 Tfc8 28.Tdc1 Da4  
 29.Kf2 Te8 30.Df5 Te6  
 31.g3? $\bar{f}$  ( 31.Td2 Da6 32.b5  
 Dc8= )  
**B1b1)**  $\triangle$ 31...Dd7 32.Sb2  
 Txc2+ ( 32...Te2+? 33.Txe2  
 Dxf5 34.Txc7 Se5 35.f4  
 Sg4+ 36.Kg1= ) 33.Dxc2  
 Dd4+ 34.Kg2 De3 $\bar{f}$  ;  
**B1b2)** 31...b5?!= 32.Se3  
 Txc2+ 33.Dxc2 Dxa3 34.Dc3  
 Dxc3 35.Txc3 Se7 36.f4 Kf8  
 37.Sg4?-+ (  $\triangle$ 37.Td3 $\bar{f}$  )



37...Sc6 38.f5 Td6 39.f6 g6  
 40.Kg2 Te6 41.Sxh6 Txf6  
 42.g4 Td6 43.g5 Ke8 44.Tf3  
 Td2+ 45.Kg1 Td7  
 ( 45...Sxb4 46.Sxf7 Td5  
 47.h4 a5-+ ) 46.Tf4 Sd4  
 47.Tf6 Se2+ 48.Kg2 Sc3  
 49.Tc6 Sd5 50.Tc5 a6  
 51.Sg4 Ke7 52.Se5 Td6  
 53.Kf3 Sxb4 54.Tc7+ Ke6  
 55.Sxf7 Td2 56.h4 Sd5  
 57.Sd8+ Ke5 58.Sf7+ Kd4  
 59.Tc6 b4 60.Txg6 b3  
 61.Tg8 b2 62.Tb8 Kc5  
 63.Tc8+ Sc7 64.Txc7+ Kb6  
 65.Tc8 Kb7 66.Td8 Txd8  
 67.Sxd8+ Kc8 68.Se6 b1D  
 69.Sf4 Kd7 70.h5 Df5 71.g6  
 Dg5 72.Ke4 Kd6 73.Kd4  
[0-1 Adhiban,B-Liem,L/  
 Taschkent 2016/chessgames.  
 com/\[F11;ewg\] ;](#)

**B2)** 8.dxe5 Lb6 9.exd6 Sa5  
 10.Db4 Sxc4 11.Dxc4 Dxd6  
 12.0-0 Le6 13.Db5+ Dd7  
 14.Dxd7+ Lxd7 15.Te1 Sf6  
 16.Le3 Lxe3 17.Txe3 0-0-0  
 18.Sbd2 The8 19.h3 h6 20.Tb1  
 Te6 21.Tb2 c5 22.Sc4 Lc6  
 23.Sfe5 Le8 24.f4 b5 25.Sa3  
 a6 26.Tf2 Td1+ 27.Kh2 Ted6  
 28.Tee2 Tc1 29.Sc2 h5 30.g4  
 hxg4 31.hxg4 Lc6 32.g5 Sxe4  
 33.Sxc6 Sxf2 34.Se7+ Kd7  
 35.Sf5 Sd3 36.Sxd6 Kxd6  
 37.Td2 c4 38.a4 bxa4 39.Se3  
 Txc3 40.Ta2 Sxf4 41.Sf5+ Ke5  
 42.Sxg7 a3 43.Se8 Tb3 44.Ta1  
 c3 [0-1 Ivanovic,B \(2515\)-Timman,  
 J \(2650\)/Reggio Emilia 1984/  
 MCD \]](#)

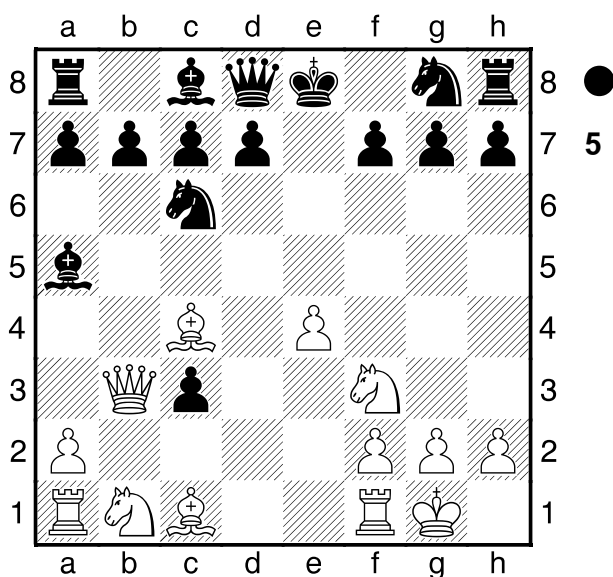
**7.0-0**

[ 7.Db3 De7 8.0-0 Lb6 9.cxd4 Sxd4  
 10.Sxd4 Lxd4 11.Sc3 Sf6 12.Sb5  
 d5 13.exd5 Lxa1 14.La3 De5 15.f4

Ld4+ 16.Kh1 De3 17.Sxd4 Dxb3  
 18.Te1+ Kd8 19.Le7+ Kd7 20.Sxb3  
 c6 21.d6 b6 22.Lxf7 c5 23.Sd2  
 Kc6 24.Sc4 Lf5 25.Se5+ Kb7  
 26.a4 h5 27.Lxf6 gxf6 28.Ld5+ Ka6  
 29.Lc4+ Kb7 30.Ld5+ Ka6 31.Lc4+  
 Kb7  $\frac{1}{2}$ - $\frac{1}{2}$  [Short,N \(2701\)-Nielsen,P  
 \(2626\)/Skanderborg 2003/CBM 098 \]](#)  
**7...dxc3** sieht logisch aus,um 1 starkes  
 w♞ zu verhindern  
 [=7...Sf6 ]  
 [ 7...d6 8.Db3 De7 ( 8...Dd7 9.cxd4  
 Lb6 10.Lb5 Kf8 11.d5 Sa5 12.Da4  
 c6 13.dxc6 bxc6 14.Ld3 Sb7  
 15.Sc3 Sc5 16.Dc2 Se7 17.La3  
 Sg6 18.Tfd1 Sf4 19.Lf1 Kg8  
 20.Se5 Dc7 21.Sc4 Le6 22.Sxd6  
 Td8 23.e5 f6 24.Lxc5 Lxc5  
 25.Sce4 Lxd6 26.exd6 Dc8 27.Sc5  
 Ld5 28.d7 Dc7 29.g3 Se6 30.Sxe6  
 Lxe6 31.Lc4 Kf7 32.Lxe6+ Kxe6  
 33.Te1+ Kf7 34.Dc4+ Kg6 35.Te7  
 Thg8 36.Tae1 h5 37.Df7+ Kh6  
 38.T1e6 Tdf8 39.Txf6+ gxf6  
 40.Dh7+ Kg5 41.h4+ Kg4 42.Te4+  
 Kh3 43.Df5+ Tg4 44.Txg4 hxg4  
 45.Dd3 [1-0 Fischer,R-Osbun,E/Davis  
 1964/Fischer \)](#) 9.e5 dxe5 10.La3  
 Df6 11.cxd4 e4 12.Se5 Sh6  
 13.Sxc6 bxc6 14.Da4 Lb6 15.Sc3  
 Ld7 16.Sxe4 Df4 17.Sc5 Lxc5  
 18.Lxc5 Sf5 19.Tfe1+ Kd8 20.Lxf7  
 Sd6 21.Le6 Te8 22.g3 Df6 23.Lxd7  
 Kxd7 24.d5 Sb5 25.Ted1 Kc8  
 26.Da6+ Kd8 27.dxc6+ Sd6  
 28.Lxd6 cxd6 29.Db7 [1-0 Fischer,R-  
 Janushkovsky,A/Davis 1964/Fischer \]](#)  
 [ 7...Sge7 8.Sg5 d5 9.exd5 Se5  
 10.Lb3 0-0 11.cxd4 Sg4 12.Df3 Sf6  
 13.La3 h6 14.Se4 Sxe4 15.Dxe4  
 Te8 16.Lb2 Sf5 17.Df4 Lb4 18.Sa3  
 Ld6 19.Dd2 Dh4 20.g3 Dh3 21.Sc4  
 b5 22.Se5 Lb7 23.Tae1 a5 24.a3  
 b4 25.axb4 Lxb4 26.Lc3 Lxc3  
 27.Dxc3 Sh4 [0-1 Morozevich,A](#)

(2745)-Adams,M (2746)/Wijk aan Zee  
2001/CBM 081 ]

### 8.Db3 Diagramm



### De7??±

[ ♖8...Df6= 9.Lg5 Dg6 10.Sxc3 Sf6  
11.e5 d5 ]

### 9.Sxc3 Sf6?+-

[ 9...Db4 10.Sd5 Dxb3 11.axb3  
Tb8± ]

### 10.Sd5 Sxd5 11.exd5 Se5 12.Sxe5

### Dxe5 13.Lb2! Dg5?

[ ♖13...De4 14.Dg3 d6 15.Dxg7  
Tf8+- ]

### 14.h4 Dxb4??

[ ♖14...Dg6+- ]

### 15.Lxg7 Tg8 16.Tfe1+ Kd8 17.Dg3!!

### #9 1-0 Fischer,R.J.-Fine,R./NY 1963.

[ 17.Dg3 Dh1+ ( 17...De7 18.Txe7  
Lb4 19.Txf7 Le7 20.Lf6 Th8  
21.De5 c6 22.Dxe7+ Kc7 23.Le5+  
Kb6 24.Db4# ; 17...Dxg3 18.Lf6# )  
18.Kxh1 Tg7 ( 18...d6 19.Lf6+ Kd7  
20.Te7+ Kd8 21.Dxg8# ; 18...Lb4  
19.Lf6+ Le7 20.Dxg8# ) 19.Dh4+ f6  
20.Dxf6+ Te7 21.Dxe7# ]

1-0