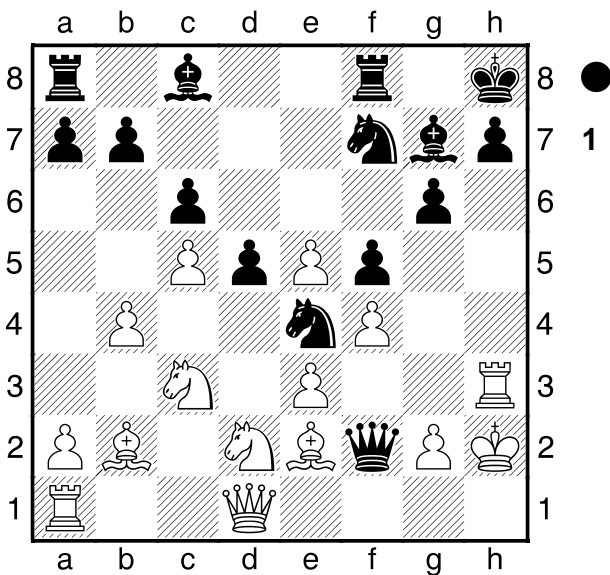


A00
 □ Ecker,Herbert **1541**
 ■ Mühlböck,Dietmar **1713**
 KLN,WLS2-HIN2 (5.3) 29.11.2019
 [Hafner;Fritz11]

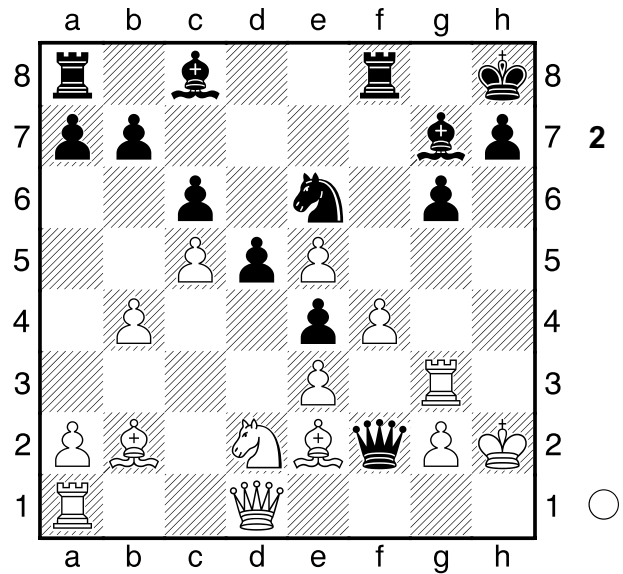
1.b4 d5 2.Lb2 Sf6 3.e3 Sbd7 4.Sf3
 g6 5.c4 c6 6.Le2 Lg7 7.0-0 0-0
 8.Db3 Sb6 9.c5 Sbd7 10.d4 Se4
 11.Sfd2 f5 12.f3 Sg5 13.h4 Sf7
 14.f4 Sf6 15.Sc3 Kh8 16.Tf3 Se4
 17.Dd1 e5!?
 [17...Ld7]
 18.dxe5 Dxh4 19.Th3 Df2+
 20.Kh2??-+ **Diagramm**
 [⊔20.Kh1⚭ Sg3+ 21.Kh2 Dxe3]



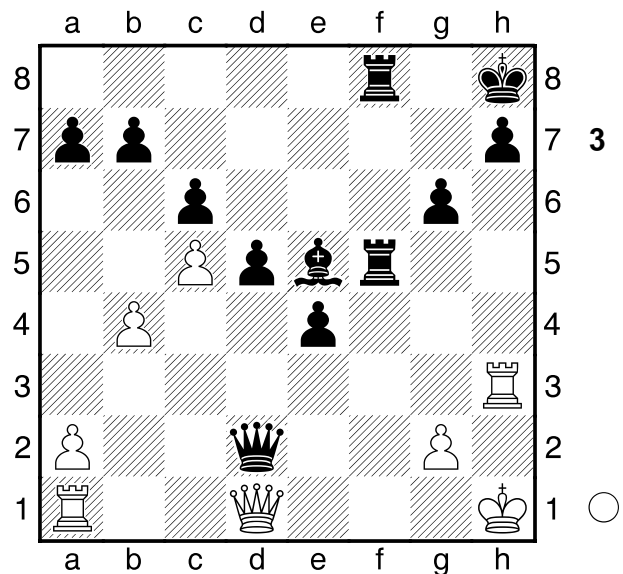
20...Sfg5!? F11: ?=
 [20...Sxe5!-+]
 21.Scxe4 fxe4 22.Tg3 Se6
Diagramm

(Diagramm 2)

23.Sb3??-+ **Der Veruszug**
 [23.De1!=]
 [F11: od. 23.Df1!=]
 23...Sxf4!! 24.exf4 Txf4 25.Lg4
 Dxb2 26.Lxc8 Txc8
 [⊔26...Lxe5!]



27.Tg4 Tf5 28.Th4 Lxe5+ 29.Kh1
 Df2 30.Th3 Tcf8 31.Sd2 Dxd2
Diagramm



F11: -#14.
 0-1